

EUROPEAN COMMISSION

EUROPEAN MARITIME SAFETY AGENCY

Cais Do Sodré 1249-206 Lisbon, Portugal

SafeSeaNet System DataBase Design

SSN

Document version: 1.21

Document release date: April 2015

Application version : 3.0.2

XMLRG version : 3.01

Document Approval

	NAME	DATE	SIGNATURE
Prepared by:	K. Panagiotopoulos	21.04.2015	
Checked by:	A. Argyropoulos	21.04.2015	
Quality control by:	N. Karioti	21.04.2015	
Approved by:	G. Carayannis		

Distribution List

COMPANY	NAME	FUNCTION	FOR INFO / APPROVAL
EMSA			
EMSA			
Member States			
SSN central system contractor			

Change control History

VERSION	DATE	AUTHOR	DESCRIPTION
0.90	25.04.2014	Intrasoft International	Submitted to EMSA for review.
0.95	23.05.2014	Intrasoft International	Updated to integrate SSN database specific requirements based on SC#09 under FC 11/EMSA/OP/08/2011. Submitted to EMSA for review.
1.00	02.07.2014	Intrasoft International	Incorporated SC#09 EMSA review comments. Submitted to EMSA for acceptance.
1.10	08.08.2014	Intrasoft International	Incorporated SC#09 final acceptance review comment.
1.20	01.09.2014	Intrasoft International	Updated to incorporate the new version of the MRS notification in the context of SC#10
<u>1.21</u>	<u>21.04.2015</u>	<u>Intrasoft International</u>	<u>Updated section 2.2 with the definition of the EXEMPTIONS table.</u>

Table of Contents

<i>Table of Contents</i>	3
Table of Tables	4
1 Introduction.....	5
1.1 Purpose.....	5
1.2 Scope	5
1.3 Reference documents.....	5
1.4 Abbreviations and acronyms	5
2 Detail Design of the SSN Databases	8
2.1 Data Model Approach	8
2.1.1 Introduction.....	8
2.1.2 Logical Database Requirements	8
2.1.3 Data modelling methodology.....	8
2.1.4 Conventions.....	9
2.2 Physical Data Model (SSN-EIS)	10
2.2.1 Physical design diagrams.....	10
2.2.2 Tables	18
2.2.3 References.....	73
2.2.4 Views.....	79
2.2.5 Synonyms	82
2.2.6 Packages	84
2.2.7 Data Consistency	86
2.2.8 SSN XML Messages Description	87
2.3 Physical Data Model (SSN-SSO)	87
2.3.1 Physical design diagrams.....	88
2.3.2 Tables	88
2.3.3 References.....	91
2.3.4 Data Consistency	91
2.4 Physical Data Model (STIRES_SCHEMA)	91
2.4.1 Physical design diagrams.....	91
2.4.2 Tables	94
2.4.3 Views.....	100
2.4.4 Synonyms	102
2.4.5 Packages and Procedures, Functions	102

2.5	Physical Data Model (REF_ADMIN)	104
2.5.1	Central Ship Database (CSD)	104
2.5.2	Central Organisation Database (COD)	107
2.5.3	Central Locations Database (CLD)	111
2.5.4	Packages	113
ANNEX A:	TASKS	114

Table of Figures

FIGURE 2-1	NOTIFICATIONS PHYSICAL DESIGN DIAGRAM	11
FIGURE 2-2	INCIDENTS (ALERTS) PHYSICAL DESIGN DIAGRAM	13
FIGURE 2-3	VESSELS PHYSICAL DESIGN DIAGRAM	14
FIGURE 2-4	GEOGRAPHY PHYSICAL DESIGN DIAGRAM	15
FIGURE 2-5	USER PHYSICAL DESIGN DIAGRAM	16
FIGURE 2-6	CONFIGURATION AND LOGS PHYSICAL DESIGN DIAGRAM	17
FIGURE 2-7	SSN-EIS VIEWS	80
FIGURE 2-8	PHYSICAL DESIGN DIAGRAM	88
FIGURE 2-9	VESSELS AND NOTIFICATIONS TABLES	92
FIGURE 2-10	VESSEL TRACKS AND ENRICHMENT TABLES	93
FIGURE 2-11	STIRES_SCHEMA VIEWS	101
FIGURE 2-12	CSD - PHYSICAL DESIGN DIAGRAM	105
FIGURE 2-13	COD - PHYSICAL DESIGN DIAGRAM	108
FIGURE 2-14	CLD - PHYSICAL DESIGN DIAGRAM	111

Table of Tables

TABLE 1-1:	REFERENCE DOCUMENTS	5
TABLE 1-2:	ABBREVIATIONS AND ACRONYMS	7
TABLE 2-1:	DATA MODEL ELEMENTS	9
TABLE 2-2:	ER – NAMING CONVENTIONS	10
TABLE 2-3:	SSN-EIS LIST OF TABLES	24
TABLE 2-4	SSN EIS LIST OF REFERENCES	79
TABLE 2-5:	SSN-EIS LIST OF VIEWS	82
TABLE 2-6:	LIST OF SYNONYMS	84
TABLE 2-7:	LIST OF PACKAGES	86
TABLE 2-8	SSN-EIS LIST OF TABLES	89
TABLE 2-9	SSN SSO LIST OF REFERENCES	91
TABLE 2-10	STIRES_SCHEMA LIST OF NEW/DEPRECATED TABLES	97
TABLE 2-11:	SSN-EIS LIST OF VIEWS	102
TABLE 2-12:	STIRES_SCHEMA LIST OF SYNONYMS	102
TABLE 2-13:	STIRES_SCHEMA LIST OF PACKAGES AND PROCEDURES	103
TABLE 2-14	LIST OF CSD TABLES	107
TABLE 2-15	LIST OF RVD REFERENCES	107
TABLE 2-16	LIST OF COD TABLES	109
TABLE 2-17	LIST OF COD REFERENCES	110
TABLE 2-18	LIST OF CLD TABLES	112
TABLE 2-19	LIST OF CLD REFERENCES	113

1 Introduction

1.1 Purpose

This document defines the SSN system database design. Additional documents that complete the SSN system design specification are:

- SDD: System Design Document
- GIDD-TI: Graphical Design Document – Textual Interface
- GIDD-GI: Graphical Design Document – Graphical Interface

1.2 Scope

The primary scope of the SSN database is to store information from vessel notification messages send to the Central SSN, vessel particular data, definitions of locations that refer to Ports and SSN participant authority and user information.

The SSN database stores also application configuration information and reference tables.

This document provides the SSN EIS data model, the SSO specific objects part of the REF_ADMIN schema and the STIRES_SCHEMA specific objects defined for the refurbished SSN GI. It shall be noted that the remaining objects of the central repository (ex Reference Repository will be defined in a new version of the document within the context of SC#06 themes 1 and 2. This document described the underlining database structure, what are the entities managed by the database and how the tables are organised.

The current version of the document incorporates the design changes part of SC#09 under FC 11/EMSA/OP/08/2011 concerning the SSN database changes to accommodate the V3 PortPlus, ShipCall and Exemptions notifications and request/response messages.

1.3 Reference documents

Id	Reference	Title	Version
R1	RUP Formal Resources Version 1.2	Rational Unified Process Formal Resources based on RUP Version: 2003.06.13	1.2
R2	N/A	Business Process Modelling Notation (BPMN)	1.2
R3	SSN-EIS-SRS	SSN EIS System Requirements Specifications	1.00
R4	SSN-XMLMessagingRefGuide	SSN XML Reference Guide	3.01
R5	SSN-SRS-SC10	SC#10 under FMC EMSA 11/EMSA/OP/08/2011	1.00

Table 1-1: Reference Documents

1.4 Abbreviations and acronyms

A list of the principal abbreviations and acronyms used in the document is provided here for a better understanding of this document.

Abbreviation	Definition
AIS	Automatic Identification Systems
EIS	European Index Server
EMSA	European Maritime Safety Agency
ER	Entity Relationship
ERD	Entity Relationship Diagram
HTML	Hyper Text Markup Language
HTTP	Hyper Text Transfer Protocol
HTTPS	Hyper Text Transfer Protocol over SSL
ID	Identification number
IMO	International Maritime Organisation
ISO	International Organization for Standardization
LCA	LOCAL Competent Authority
MMSI	Maritime Mobile Service Identity
MRS	Mandatory Identification System
IoC	Inversion of Control
IE	Internet Explorer
II	INTRASOFT International
JMS	Java Message Service
JNDI	Java Naming and Directory Interface; used for reference to Java EE components defined in WebLogic server.
JSP	Java Server Pages
JSTL	JavaServer Pages Standard Tag Library
MMSI	Maritime Mobile Service Identity
MRS	Mandatory Ship Reporting System
MS	Member States.
MSS	Maritime Support Services
MSS Tool	Messages Availability MSS tool
MVC	Model-view-controller
N/A	Not Applicable or Not Available
NCA	National Competent Authority
OVR	Operational Vessel Registry

Req	Request
RUP	Rational Unified Process
SAT	Ship Activity Tracking
SQL	Structured Query Language
SSL	Secure Socket Layer
SSN	SafeSeaNet
TR	Table Reference
TRD	Table Reference Diagram
UML	Unified Modelling Language
URL	Unified Resource Locator
UTC	Coordinated Universal Time
V&V	Vessel Verification and Validation
XML	eXtensible Markup Language

Table 1-2: Abbreviations and Acronyms

2 Detail Design of the SSN Databases

The database design consists of the logical and the physical data models. The logical data model is based upon the definitions of the system requirements. Furthermore, the entities are mapped to tables that will store the data in the database; the attributes are mapped to table columns; unique primary identifiers yield primary keys for each table, and the relationships generate foreign key constraints. The physical data model is built upon the logical data model by incorporating additional requirements in the model. As a result, additional database objects, such as indexes are defined. Whereas the logical model is largely independent of implementation details, the physical model describes exactly how the logical design will be implemented in the Oracle RDBMS server.

2.1 Data Model Approach

2.1.1 Introduction

The Physical Data Model is depicted in section 2.2 that models the information system including the details of physical implementation.

For the SSN system, the *PowerDesigner by Sybase* is deployed to visually represent the tables of the system.

2.1.2 Logical Database Requirements

The SafeSeaNet system is expected to implement a robust database design. The system's database should enforce and enable all the constraints necessary to ensure data integrity and also contain adequate primary/foreign keys as well as indexes on all the tables. Where possible, security should be enforced by ORACLE access privileges without solely relying on the application code. This also means that no application user should have direct access to the Oracle database.

The exact database structure will be determined during the design phase. However the following information should be considered for permanent storage:

- Operational, those originate from XML messages exchanged (e.g. Notification/Request/Response).
- System specific metadata.
- Reference data.

During the database design phase, the technical architect should also be aware that the data types and field sizes should match the corresponding definitions in the XML Reference Guide.

2.1.3 Data modelling methodology

Data Model Elements

Data Model Elements	
Entity type	It represents a distinguishable object type. In real-world modelling, an entity type is an important business object that contains more than one property. An entity is a thing of significance, whether real or conceptual, about which the business or system being modelled needs to hold information. Entities are displayed as boxes on a diagram, which can display details such as attributes.
Entities	They can be described as being in a hierarchy, with children inheriting properties from their parents. Parent entities are called <i>super-types</i> , and child entities are called <i>sub-types</i> . A relationship type represents an association between or among several entities.
Table	A collection of records (rows) that have associated columns.
Relationship	It represents an association that needs to be remembered by the database system. A <i>relationship type</i> can be unary, binary, or n-ary, depending on whether the number of entities involved in the relationship is one, two or more than two.
Reference	It represents the link between a parent table and a child table. A reference can link tables by shared keys or by specified columns.
Attribute	An attribute is a property that is used to describe an entity or a relationship. An attribute that uniquely identifies an entity is called a <i>primary key</i> . An attribute that is a primary key of another relation is called a <i>foreign key</i> .
Cardinality Constraint	A cardinality constraint specifies the number of relationship instances in which an entity can participate. They are in the form of 1, 0..*, 1..*, in binary relationships, corresponding to one-to-one, zero-to-many and one-to-many respectively.

Table 2-1: Data Model Elements

2.1.4 Conventions

The following naming conventions are applied to naming entities.

ER – Entities Naming Conventions	
Cardinality 1, 0..*, 1..*:	It signifies one-to-one, zero-to-many and one-to-many relationship.


	They are represented with a single line connecting two entities. The anchor at the end of a line signifies that the primary key of the entity "identifies" the other entity.
ER – Attribute Naming Conventions	
_ID	A two-letter postfix defining the internal system unique identifier for an instance of the corresponding entity.
PK, FK, UK	An indication of whether the column is used as part of the Primary Key (PK) of the table and/or the Foreign Key (FK) or the Unique Key (UK).
ER – Constraint and Indexes Naming Conventions	
PK	A two-letter prefix/postfix defining the primary key.
UK	A two-letter prefix/postfix defining the unique key.
FK	A two-letter prefix/postfix defining the foreign key.
IDX	A one-letter prefix/postfix defining the index.

Table 2-2: ER – Naming Conventions

2.2 Physical Data Model (SSN-EIS)

The physical design diagrams of the SSN-EIS database schema are depicted in the following subsections. The contents and comments per table are presented in the subsequent sections.

2.2.1 Physical design diagrams

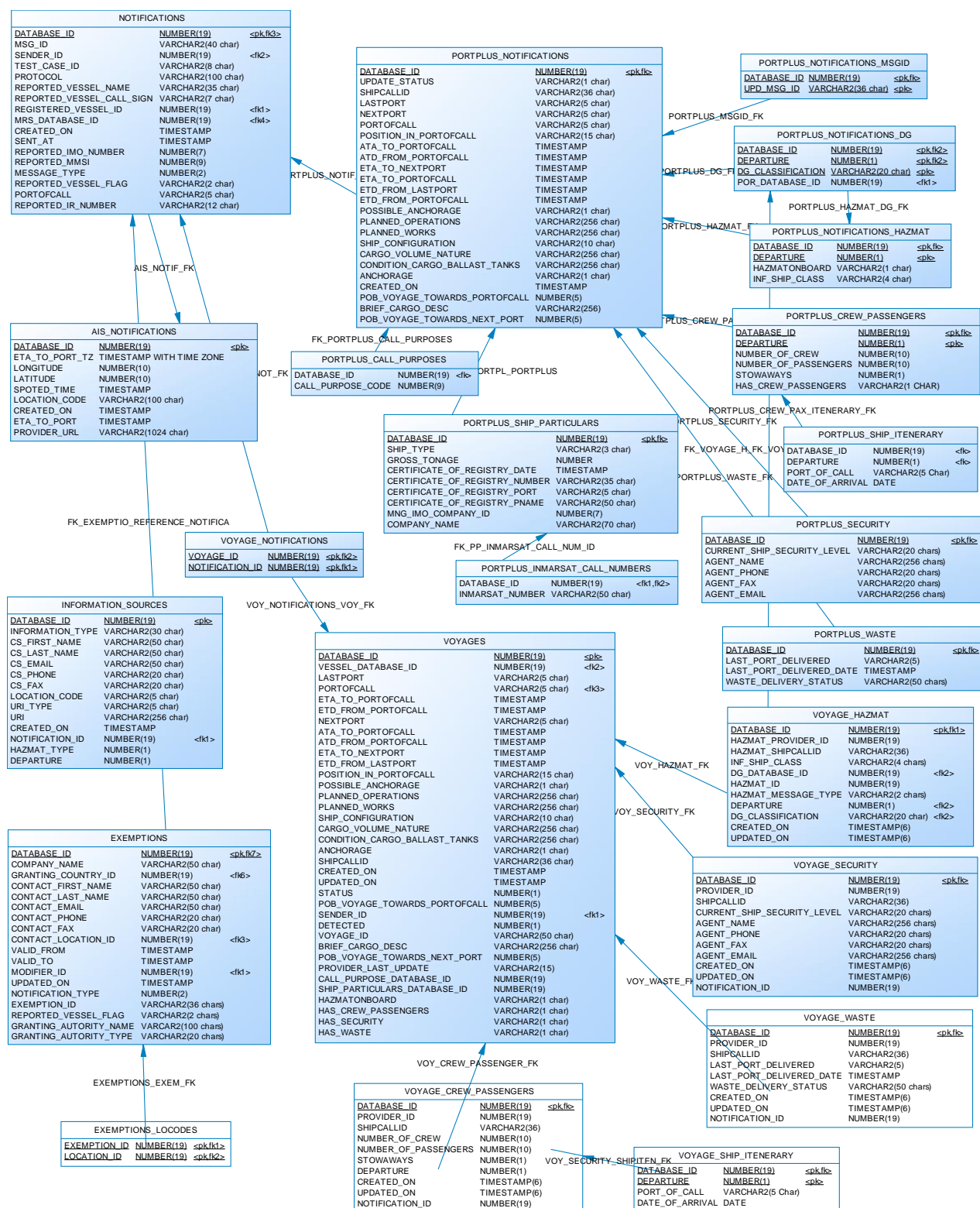
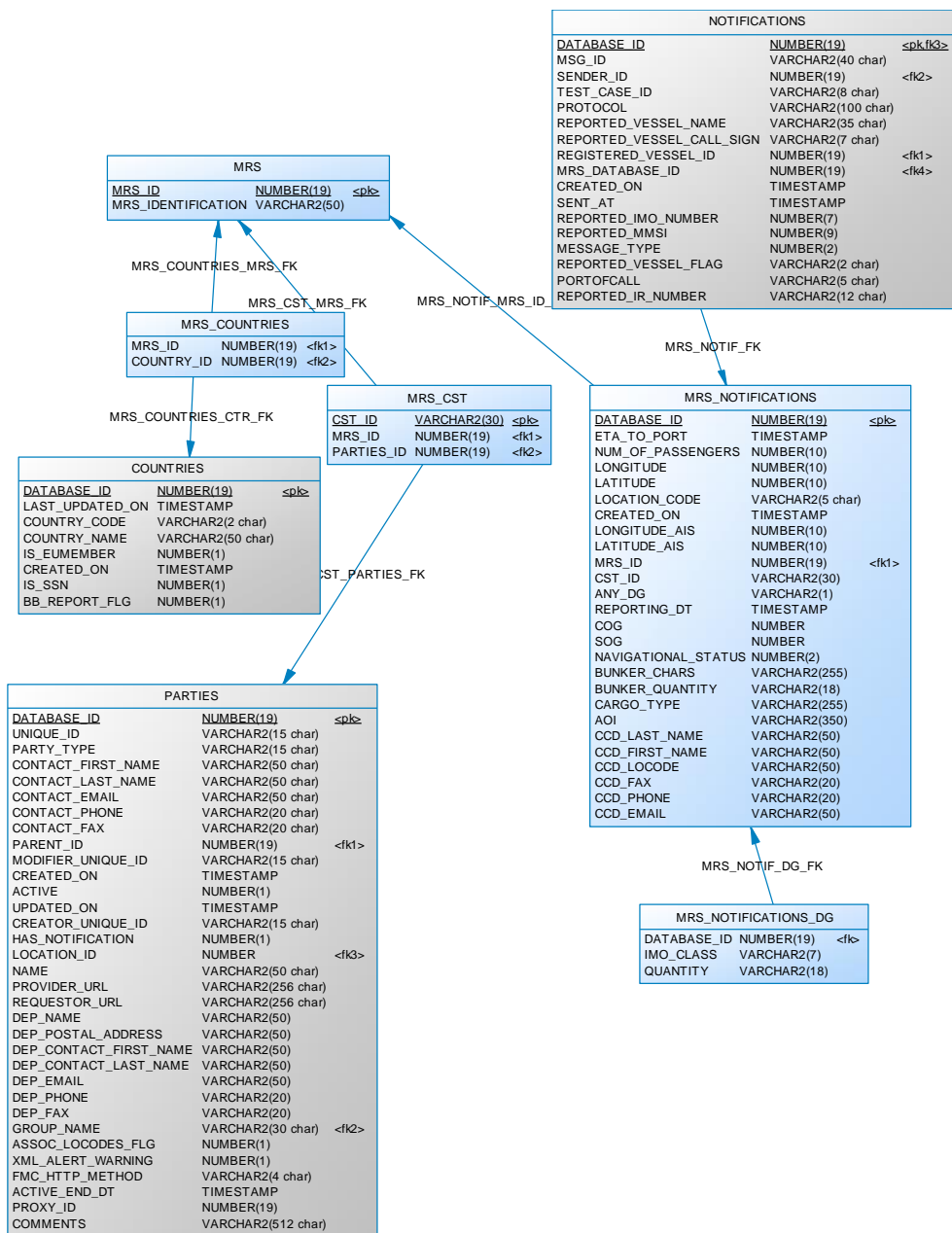


Figure 2-1 Notifications physical design diagram



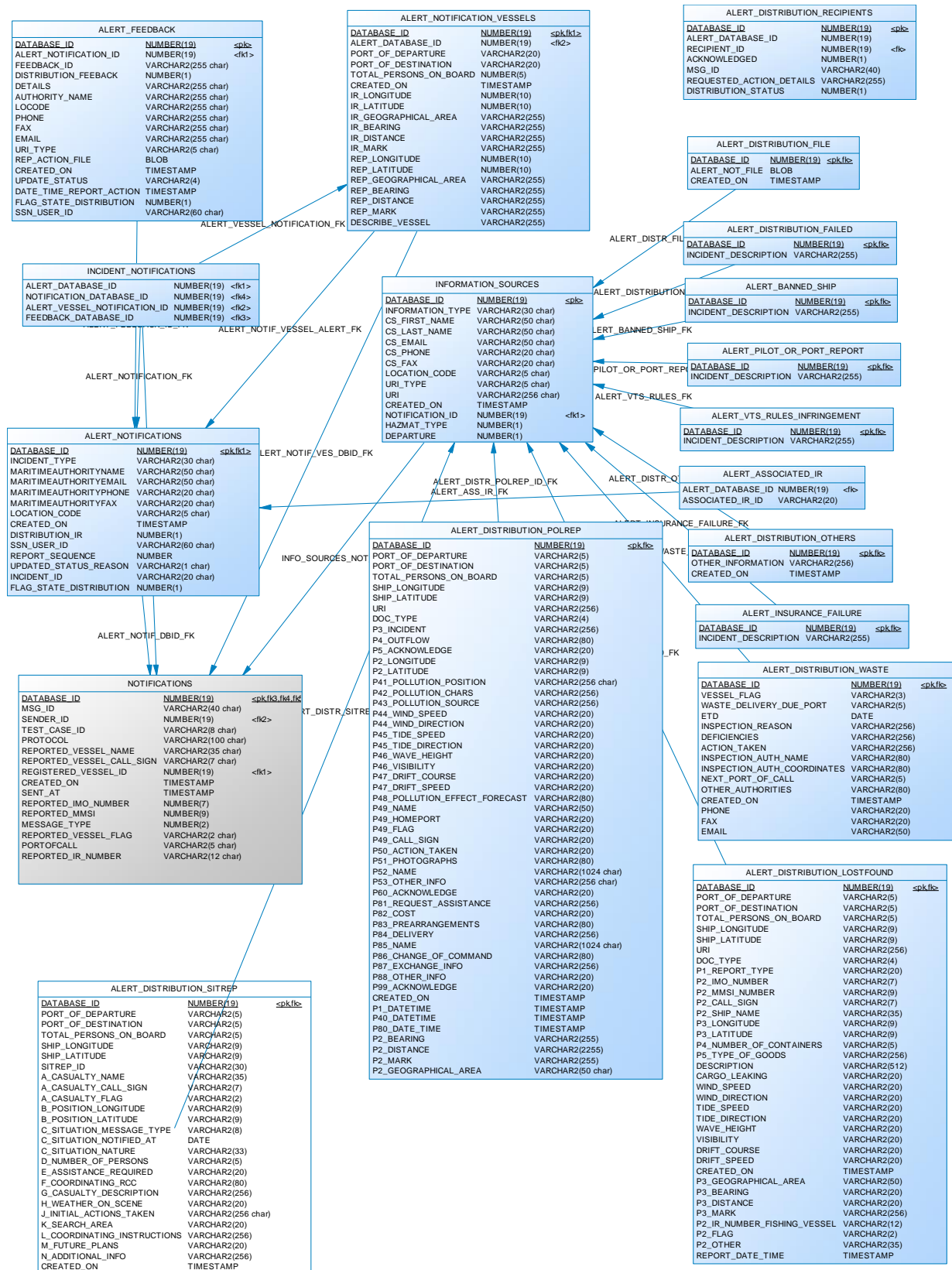


Figure 2-2 Incidents (Alerts) physical design diagram

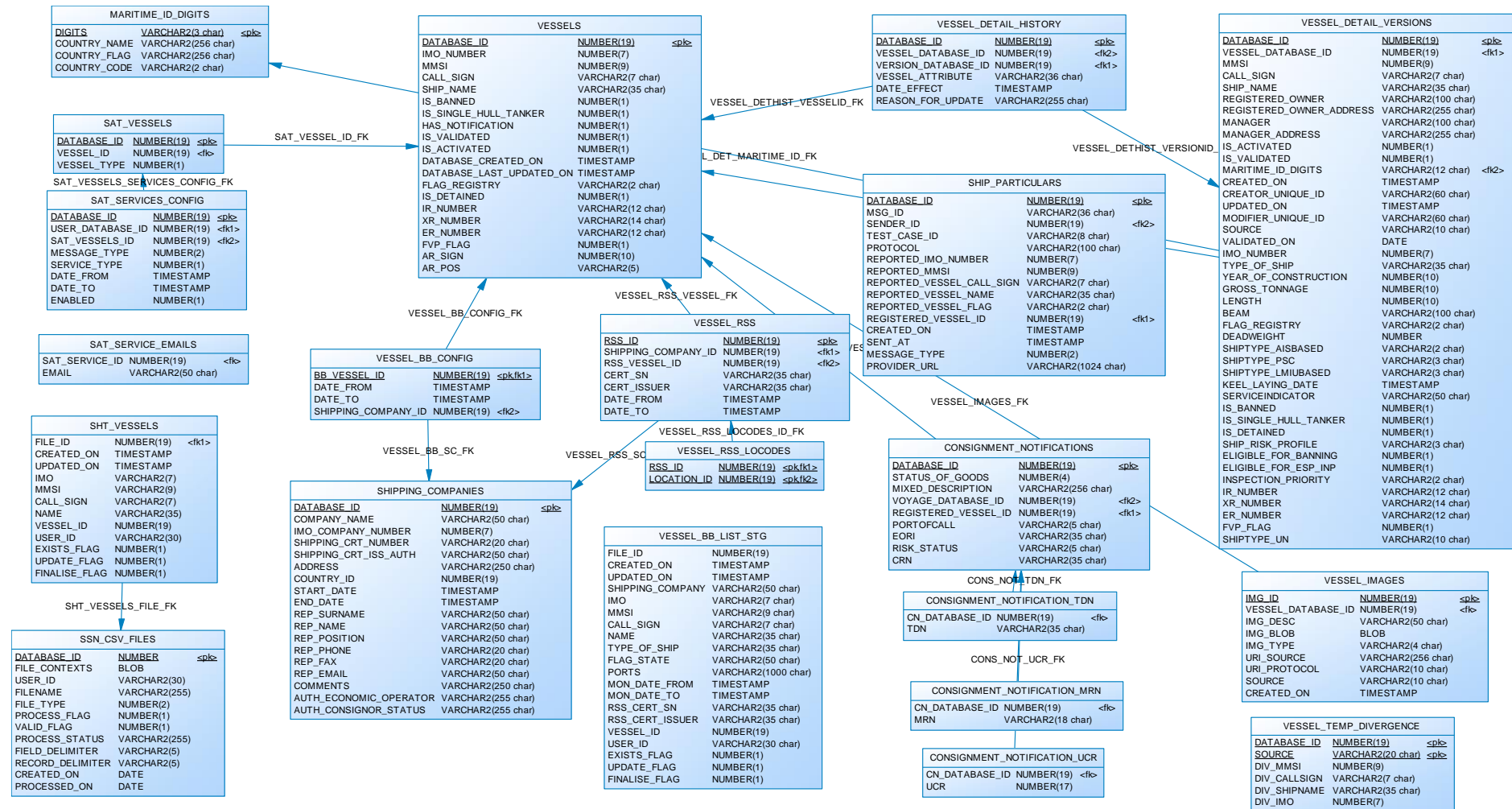


Figure 2-3 Vessels physical design diagram

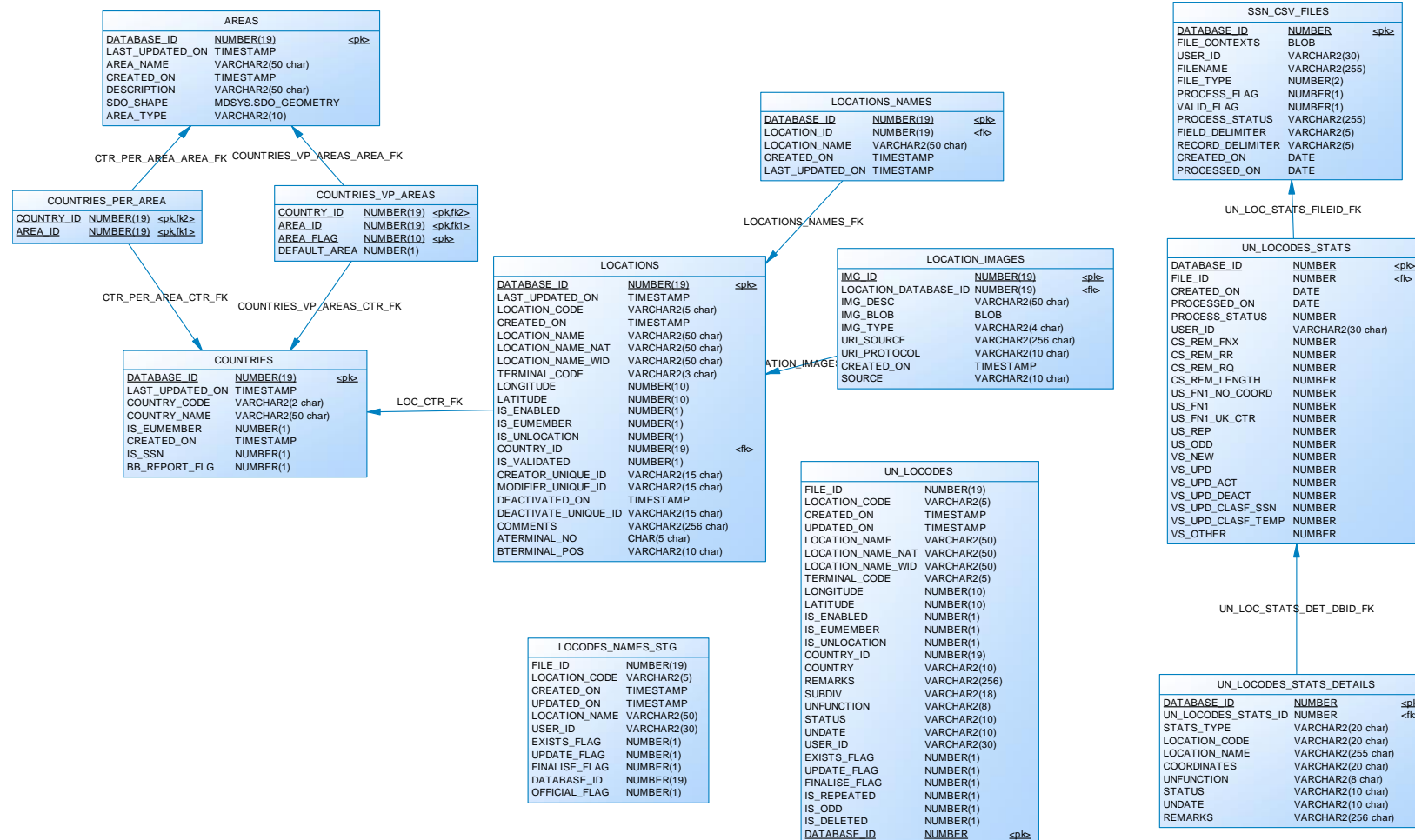


Figure 2-4 Geography physical design diagram

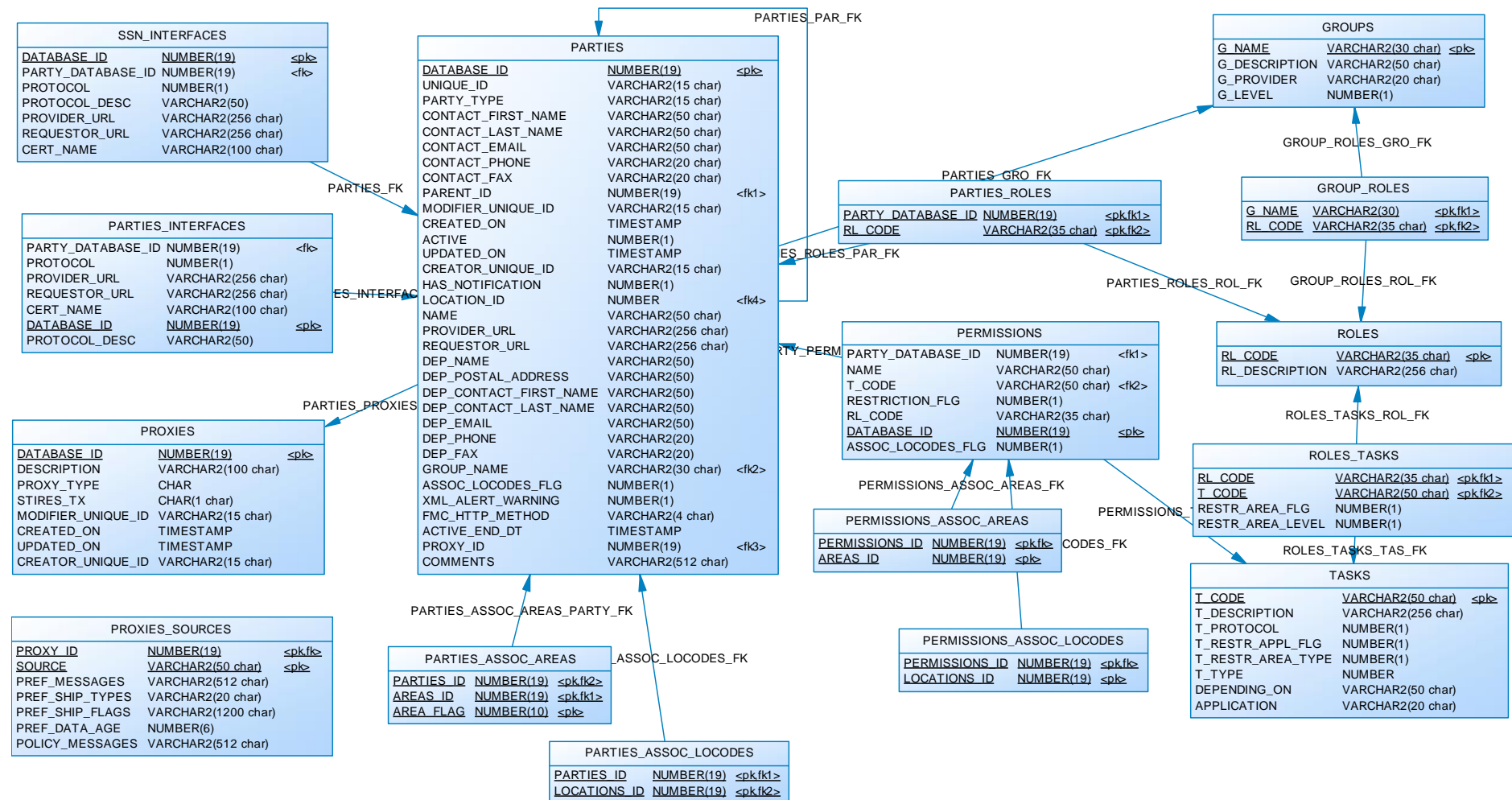


Figure 2-5 User physical design diagram

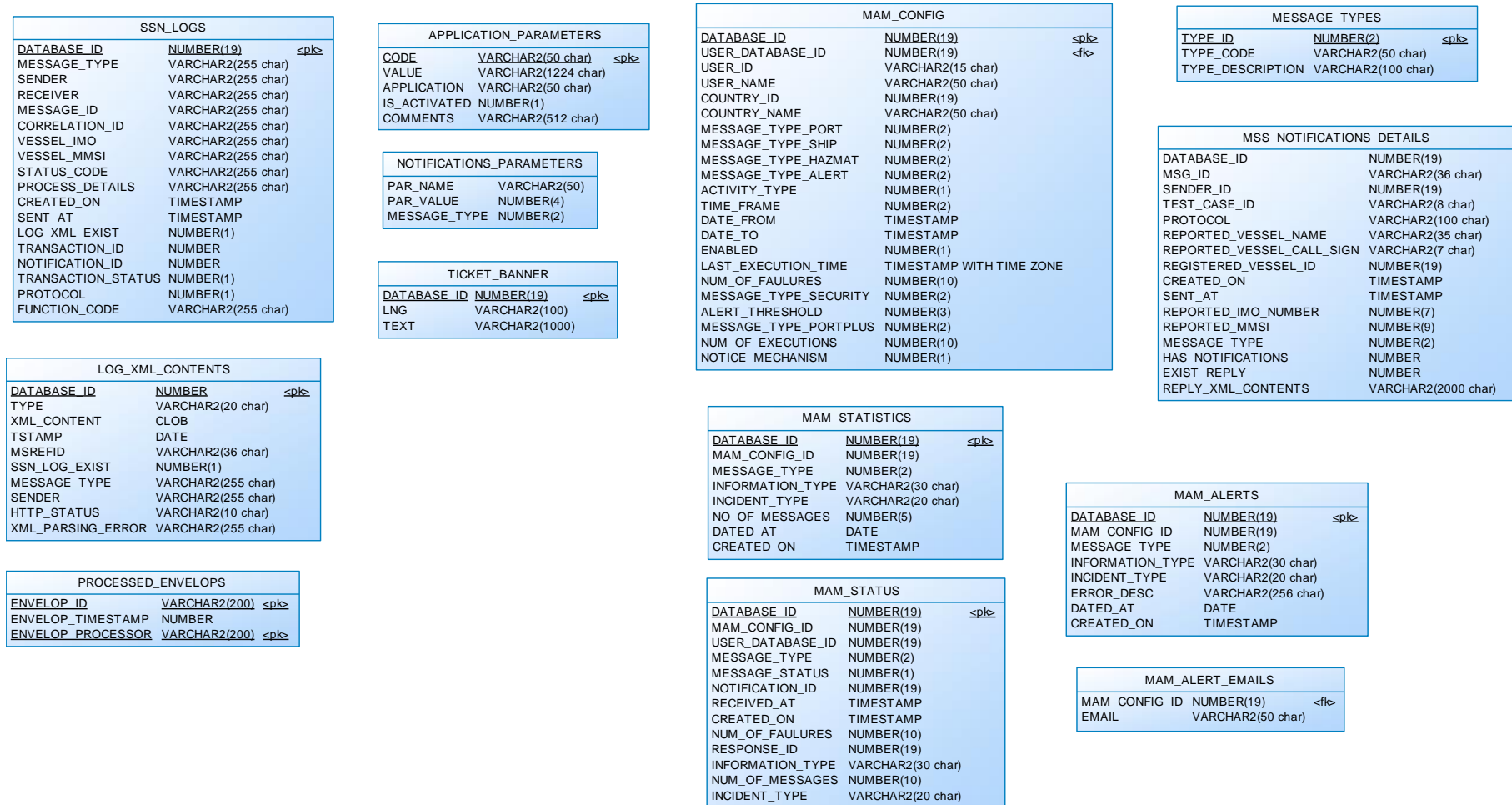


Figure 2-6 Configuration and Logs physical design diagram

2.2.2 Tables

This section lists all the tables contained in the SSN-EIS data model depicted in the previous subsection.

For the detailed table contents please refer to the subsequent sections.

Table	Comment
AIS_NOTIFICATIONS	Holds attributes specific to AisNotifications
ALERT_ASSOCIATED_IR	Holds the association between the Incident (Alert) notification Id and the Incident Id.
ALERT_BANNED_SHIP	Incident (Alert) Distribution detail table. Holds the Additional Information of a distributed Incident (Alert) Notification of type BannedShip.
ALERT_DISTRIBUTION_FAILED	Incident (Alert) Distribution detail table. Holds the Additional Information of a distributed Incident (Alert) Notification of type FailedNotification.
ALERT_DISTRIBUTION_FILE	Incident (Alert) Distribution detail table. Holds the Incident (Alert) Distribution details electronic document.
ALERT_DISTRIBUTION_LOSTFOUND	Incident (Alert) Distribution detail table. Holds the Additional Information of a distributed Incident (Alert) Notification of type LostFound.
ALERT_DISTRIBUTION_OTHERS	Incident (Alert) Distribution detail table. Holds the Additional Information of a distributed Incident (Alert) Notification of type Others.
ALERT_DISTRIBUTION_POLREP	Incident (Alert) Distribution detail table. Holds the Additional Information of a distributed Incident (Alert) Notification of type Polrep.
ALERT_DISTRIBUTION_RECIPIENTS	Incident (Alert) Distribution Recipients table. Holds the recipients that the Incident (Alert) notification that has been distributed.
ALERT_DISTRIBUTION_SITREP	Incident (Alert) Distribution detail table. Holds the Additional Information of a distributed Incident (Alert) Notification of type Sitrep.
ALERT_DISTRIBUTION_WASTE	Incident (Alert) Distribution detail table. Holds the Additional Information of a distributed Incident (Alert) Notification of type Waste.
ALERT_FEEDBACK	Holds attributes specific to Feedback IR Distribution Notifications
ALERT_INSURANCE_FAILURE	Incident (Alert) Distribution detail table. Holds the Additional Information of a distributed Incident

	(Alert) Notification of type InsuranceFailure.
ALERT_NOTIFICATION_VESSELS	Holds attributes specific to Vessel Identification of Incident (Alert) Distribution Notifications
ALERT_NOTIFICATIONS	Holds attributes specific to Incident (Alert) Distribution Notifications
ALERT_PILOT_OR_PORT_REPORT	Incident (Alert) Distribution detail table. Holds the Additional Information of a distributed Incident (Alert) Notification of type PilotOrPortReport.
ALERT_VTS_RULES_INFRINGEMENT	Incident (Alert) Distribution detail table. Holds the Additional Information of a distributed Incident (Alert) Notification of type VTSRulesInfringement.
APPLICATION_PARAMETERS	Holds application configuration parameters
AREAS	The countries table
CONSIGNMENT_NOTIFICATION_MRN	Hold the movement reference number (MRN) as part of the consignment notification data.
CONSIGNMENT_NOTIFICATION_TDN	Hold the Transport document number (TDN) as part of the consignment notification data.
CONSIGNMENT_NOTIFICATION_UCR	Hold the UCR as part of the consignment notification data.
CONSIGNMENT_NOTIFICATIONS	Holds the definition of a consignment notification in terms of conveyance, risk, status of goods etc.
COUNTRIES	The countries table
COUNTRIES_PER_AREA	Holds the countries per area
COUNTRIES_VP_AREAS	Holds the Data Provider and Data Visualization areas per country
EXEMPTIONS	Holds attributes specific to Exemption Notifications
EXEMPTIONS_LOCODES	Holds the scheduled service LoCodes for the Exemption Notifications
GROUP_ROLES	Holds the roles assigned to parties groups
GROUPS	The parties groups table
INCIDENT_NOTIFICATIONS	Holds the association between the Incident (Alert) notification Id the reported incident, the feedback(s) and the notification messag.
INFORMATION_SOURCES	Holds subclasses of the AdditionalInformationSource class. Defines the way notification details are provided and the source of notification details (e.g. phone and FAX of data provider or URL).

LOCATION_IMAGES	A storage for multimedia files related to a LOCATION. The files include pictures or video and are stored as BLOBs.
LOCATIONS	The locations table
LOCATIONS_NAMES	Holds the Location Names for a given Location_Id
LOCODES_NAMES_STG	Staging Location Names to be uploaded onto the LOCATIONS_NAMES table following the validation and verification process.
LOG_XML_CONTENTS	Holds the XML content of the messages received.
MAM_ALERT_EMAILS	The list of monitoring alert recipient email addresses
MAM_ALERTS	The alerts produced based on notification and response receipt
MAM_CONFIG	The message availability configuration table
MAM_STATISTICS	The message availability statistics table
MAM_STATUS	The message availability status table
MARITIME_ID_DIGITS	The Maritime Identification Digits
MESSAGE_TYPES	Holds type of messages defined in SSN
MRS	Holds the Mandatory Reporting Systems (MRSs) reference list. The list contains the names of the systems registered in SSN.
MRS_COUNTRIES	Holds the list of Countries per MRS, entitled to provide MRS notifications.
MRS_CST	Holds the Coastal Stations (CSTs) per MRS responsible for receiving ship-to-shore MRS reports.
MRS_NOTIFICATIONS	Holds attributes specific to Mrs Notifications
MRS_NOTIFICATIONS_DG	Holds the list of DG reported per MRS Notification.
MSS_NOTIFICATIONS_DETAILS	Holds information on MS responses based on MSS tool configuration.
NOTIFICATIONS	The url where the organization receives AdditionalInformationRequests made by SSN
NOTIFICATIONS_PARAMETERS	Holds the period in calendar days that define the scope of queries for latest or relevant notification details.
PARTIES	Holds the actual actors (users) in SafeSeaNet. These could be Organizations interfacing with EIS

	via the XML protocol and Persons which are real people entities interfacing EIS via the Web application.
PARTIES_ASSOC_AREAS	Holds the areas associated with a given party
PARTIES_ASSOC_LOCODES	Holds the LoCodes associated with a given party
PARTIES_INTERFACES	Holds the interfaces per party. SSN XMLRG supports only 1 interface per party.
PARTIES_ROLES	Holds the roles assigned to parties
PERMISSIONS	Holds the permissions assigned to parties
PERMISSIONS_ASSOC_AREAS	Holds the associated areas when the permission has a geographical restriction = Area
PERMISSIONS_ASSOC_LOCODES	Holds the associated LoCodes when the permission has a geographical restriction = Specific
PORTPLUS_CALL_PURPOSE	Holds the call purpose codes reported in the PortPlusNotification.
PORTPLUS_CREW_PASSENGERS	Holds the crew and passengers information for a given PortPlusNotification received. The crew and passengers data are classified by the DEPARTURE attribute that indicates if the data are at arrival to the PortOfCall or at departure from the PortOfCall.
PORTPLUS_INMARSAT_CALL_NUMBERS	Holds the Inmarsat call numbers for the ship reported in a PortPlusNotification.
PORTPLUS_NOTIFICATIONS	Holds attributes specific to PortPlus Notifications. The notification details and the cargo manifest are information sources stored in the INFORMATION_SOURCES table.
PORTPLUS_NOTIFICATIONS_DG	Holds the dangerous goods classification (IMO Code DG) for a given PortPlusNotifications
PORTPLUS_NOTIFICATIONS_HAZMAT	Holds the hazmat information for a given PortPlusNotifications. The Hazmat data are classified by the DEPARTURE attribute that indicates if the data is at arrival to the PortOfCall or at departure from the PortOfCall.
PORTPLUS_NOTIFICATIONS_MSGID	Holds the update notifications (UpdateMSRefId) for a given PortPlusNotifications
PORTPLUS_SECURITY	Holds the security information for a given PortPlusNotification received.
PORTPLUS_SHIP_ITENERARY	Holds the ship itinerary information associated with crew and passenger data received (in the case of

	cruise ships).
PORTPLUS_SHIP_PARTICULARS	Holds the ship particulars reported in a PortPlusNotification.
PORTPLUS_WASTE	Holds the waste information for a given PortPlusNotification received.
PROCESSED_ENVELOPS	Holds the timestamp of the processing of a message
PROXIES	This table contains the list of all STIRES system's proxies.
PROXIES_SOURCES	This table contains the STIRES system's proxies policies and preferences per sensor sources.
ROLES	Holds the roles defined in EIS
ROLES_TASKS	Holds the tasks assigned to roles
SAT_SERVICE_EMAILS	The ship activity tracking email recipients
SAT_SERVICES_CONFIG	The ship activity tracking configuration table
SAT_VESSELS	The ship activity tracking vessel identification
SET_BRANCHEPATH	The prediction plan algorithm definition of the rout point branches
SET_ROUTPOINTS	Stores the definition of the sets of Rout-Points used for the prediction of the voyage plan.
SET_RP_LOCODES	Store the relationship between the Sets of Rout-Point and locations. A location may belong to one or more sets of Rout-Points.
SHIP_PARTICULARS	The ship_particulars tables - it stores the information of ship particulars notifications
SHIPPING_COMPANIES	Holds shipping operator data
SHT_VESSELS	The uploaded SHT stage table
SSN_CSV_FILES	The uploaded CSV files
SSN_INTERFACES	Hold the definition of the SSN supporting interfaces (e.g. XML, Web etc).
SSN_LOGS	Holds all the information that has been exchanged via EIS
TASKS	Holds the definition of Tasks. A task is a function that applies to a given entity (e.g. SHIPCALL_REQUESTOR).
TICKET_BANNER	Ticket Banner text to be displayed on the Web application header

UN_LOCODES	The uploaded locations stage table.
UN_LOCODES_STATS	Holds the statistics of the upload UNECE locodes process. Each process - of uploading a given UN file - is recorded as one record.
UN_LOCODES_STATS_DETAILS	Holds the applicable UN_LOCODES related to the UN_LOCODES_STATS statistics
VESSEL_BB_CONFIG	Holds the list of Blue Belt Vessels
VESSEL_BB_LIST_STG	Stage table for the Blue Belt ship list.
VESSEL_DETAIL_HISTORY	Holds the update details of vessel particulars such as the reason and timestamp the updates became effective
VESSEL_DETAIL_VERSIONS	Holds versions about the details of a vessel
VESSEL_IMAGES	A storage for multimedia files related to a VESSELS. The files include pictures or video and are stored as BLOBs.
VESSEL_RSS	Holds the list of Vessels in Regular Shipping Service (RSS)
VESSEL_RSS_LOCODES	Holds the RSS LoCodes
VESSEL_TEMP_DIVERGENCE	Holds the vessel particulars identified in the MarInfo database that diverge from those in the EIS OVR. Table populated based on the semiautomatic OVR update procedure.
VESSELS	The Vessels table
VOYAGE_CREW_PASSENGERS	Holds the consolidated crew and passengers' information associated with a voyage. The crew and passengers' data corresponding to the voyage are stored per voyage (i.e. the arrival data for the voyage towards PortOfCall, the departure data for the voyage towards NextPort).
VOYAGE_HAZMAT	<p>Holds the consolidated hazmat information associated with a voyage. The hazmat data corresponding to the voyage are stored per voyage (i.e. the arrival data for the voyage towards PortOfCall, the departure data for the voyage towards NextPort).</p> <p>The notification type that reported Hazmat is defined in the HAZMAT_MESSAGE_TYPE column (for backward compatibility this is preserved to distinguish v2 Hazmat from PortPlus notification).</p> <p>The actual PortPlusNotification is referenced by the</p>

	HAZMAT_ID, while the DG classification information is referenced by the DG_DATABASE_ID column.
VOYAGE_NOTIFICATIONS	Holds the relationships of notifications and the voyages they define.
VOYAGE_SECURITY	Holds the consolidated security information associated with a voyage.
VOYAGE_SHIP_ITENERARY	Holds the ship itinerary associated with crew and passenger data (in the case of cruise ships) for a given voyage.
VOYAGE_WASTE	Holds the consolidated waste information associated with a voyage.
VOYAGES	<p>Holds the vessel voyage details that correlate Port, PortPlus, Hazmat and Ship notifications based on the ship call and direction of the ship reported in these notifications.</p> <p>The table and the associated tables provide the consolidated voyage information incorporating all the information notified for the voyage (including the information on Hazmat related to it) and indication of Hazmat, pre-arrival, waste, security and crew & passengers if applicable. The Hazmat information, if available, may be provided either by the departure port or the arrival port of the voyage. The provider of the Hazmat information, the ShipCallID of the call that the Hazmat was reported, and the information source to be used for contacting the Hazmat data provider for retrieving the Hazmat details shall be recorded.</p> <p>The consolidated view discriminates the voyages by:</p> <ul style="list-style-type: none"> – arrival (hold consolidated pre-arrival and arrival details) and – departure (hold consolidated departure details).

Table 2-3: SSN-EIS List of Tables

The following subsections describe all the tables contained in the SSN-EIS physical data model.

2.2.2.1 Table AIS_NOTIFICATIONS

Code	Primary	Foreign Key	Mandatory	Data Type	Length
DATABASE_ID	X		X	NUMBER(19)	19
ETA_TO_PORT_TZ				TIMESTAMP WITH TIME	

				ZONE	
LONGITUDE				NUMBER(10)	10
LATITUDE				NUMBER(10)	10
SPOTED_TIME				TIMESTAMP	
LOCATION_CODE				VARCHAR2(100 char)	100
CREATED_ON				TIMESTAMP	
ETA_TO_PORT				TIMESTAMP	
PROVIDER_URL				VARCHAR2(256 char)	256

2.2.2.2 Table ALERT_ASSOCIATED_IR

Code	Primary	Foreign Key	Mandatory	Data Type	Length
ALERT_DATABASE_ID		X	X	NUMBER(19)	19
ASSOCIATED_IR_ID			X	VARCHAR2(20)	20

2.2.2.3 Table ALERT_BANNED_SHIP

Code	Primary	Foreign Key	Mandatory	Data Type	Length
DATABASE_ID	X	X	X	NUMBER(19)	19
INCIDENT_DESCRIPTION				VARCHAR2(255)	255

2.2.2.4 Table ALERT_DISTRIBUTION_FAILED

Code	Primary	Foreign Key	Mandatory	Data Type	Length
DATABASE_ID	X	X	X	NUMBER(19)	19
INCIDENT_DESCRIPTION				VARCHAR2(255)	255

2.2.2.5 Table ALERT_DISTRIBUTION_FILE

Code	Primary	Foreign Key	Mandatory	Data Type	Length
DATABASE_ID	X	X	X	NUMBER(19)	19
ALERT_NOT_FILE				BLOB	
CREATED_ON				TIMESTAMP	

2.2.2.6 Table ALERT_DISTRIBUTION_LOSTFOUND

Code	Primary	Foreign Key	Mandatory	Data Type	Length
DATABASE_ID	X	X	X	NUMBER(19)	19
PORT_OF_DEPARTURE				VARCHAR2(5)	5
PORT_OF_DESTINATION				VARCHAR2(5)	5
TOTAL_PERSONS_ON_BOARD				VARCHAR2(5)	5
SHIP_LONGITUDE				VARCHAR2(9)	9
SHIP_LATITUDE				VARCHAR2(9)	9
URI				VARCHAR2(256)	256
DOC_TYPE				VARCHAR2(4)	4
P1_REPORT_TYPE				VARCHAR2(20)	20
P2_IMO_NUMBER				VARCHAR2(7)	7
P2_MMSI_NUMBER				VARCHAR2(9)	9
P2_CALL_SIGN				VARCHAR2(7)	7
P2_SHIP_NAME				VARCHAR2(35)	35
P3_LONGITUDE				VARCHAR2(9)	9
P3_LATITUDE				VARCHAR2(9)	9
P4_NUMBER_OF_CONTAINERS				VARCHAR2(5)	5
P5_TYPE_OF_GOODS				VARCHAR2(256)	256
DESCRIPTION				VARCHAR2(512)	512
CARGO_LEAKING				VARCHAR2(20)	20
WIND_SPEED				VARCHAR2(20)	20
WIND_DIRECTION				VARCHAR2(20)	20
TIDE_SPEED				VARCHAR2(20)	20
TIDE_DIRECTION				VARCHAR2(20)	20
WAVE_HEIGHT				VARCHAR2(20)	20
VISIBILITY				VARCHAR2(20)	20
DRIFT_COURSE				VARCHAR2(20)	20

DRIFT_SPEED				VARCHAR2(20)	20
CREATED_ON				TIMESTAMP	
P3_GEOGRAPHICAL_AREA				VARCHAR2(50)	50
P3_BEARING				VARCHAR2(20)	20
P3_DISTANCE				VARCHAR2(20)	20
P3_MARK				VARCHAR2(256)	256
P2_IR_NUMBER_FISHING_VESSEL				VARCHAR2(12)	12
P2_FLAG				VARCHAR2(2)	2
P2_OTHER				VARCHAR2(35)	35
REPORT_DATE_TIME				TIMESTAMP	

2.2.2.7 Table ALERT_DISTRIBUTION_OTHERS

Code	Primary	Foreign Key	Mandatory	Data Type	Length
DATABASE_ID	X	X	X	NUMBER(19)	19
OTHER_INFORMATION				VARCHAR2(256)	256
CREATED_ON				TIMESTAMP	

2.2.2.8 Table ALERT_DISTRIBUTION_POLREP

Code	Primary	Foreign Key	Mandatory	Data Type	Length
DATABASE_ID	X	X	X	NUMBER(19)	19
PORT_OF_DEPARTURE				VARCHAR2(5)	5
PORT_OF_DESTINATION				VARCHAR2(5)	5
TOTAL_PERSONS_ON_BOARD				VARCHAR2(5)	5
SHIP_LONGITUDE				VARCHAR2(9)	9
SHIP_LATITUDE				VARCHAR2(9)	9
URI				VARCHAR2(256)	256
DOC_TYPE				VARCHAR2(4)	4
P3_INCIDENT				VARCHAR2(256)	256
P4_OUTFLOW				VARCHAR2(80)	80

P5_ACKNOWLEDGE				VARCHAR2(20)	20
P2_LONGITUDE				VARCHAR2(9)	9
P2_LATITUDE				VARCHAR2(9)	9
P41_POLLUTION_POSITION				VARCHAR2(256 char)	256
P42_POLLUTION_CHARS				VARCHAR2(256)	256
P43_POLLUTION_SOURCE				VARCHAR2(256)	256
P44_WIND_SPEED				VARCHAR2(20)	20
P44_WIND_DIRECTION				VARCHAR2(20)	20
P45_TIDE_SPEED				VARCHAR2(20)	20
P45_TIDE_DIRECTION				VARCHAR2(20)	20
P46_WAVE_HEIGHT				VARCHAR2(20)	20
P46_VISIBILITY				VARCHAR2(20)	20
P47_DRIFT_COURSE				VARCHAR2(20)	20
P47_DRIFT_SPEED				VARCHAR2(20)	20
P48_POLLUTION_EFFECT_FORECAST				VARCHAR2(80)	80
P49_NAME				VARCHAR2(50)	50
P49_HOMEPORT				VARCHAR2(20)	20
P49_FLAG				VARCHAR2(20)	20
P49_CALL_SIGN				VARCHAR2(20)	20
P50_ACTION_TAKEN				VARCHAR2(20)	20
P51_PHOTOGRAPHS				VARCHAR2(80)	80
P52_NAME				VARCHAR2(1024 char)	1024
P53_OTHER_INFO				VARCHAR2(256 char)	256
P60_ACKNOWLEDGE				VARCHAR2(20)	20
P81_REQUEST_ASSISTANCE				VARCHAR2(256)	256
P82_COST				VARCHAR2(20)	20
P83_PREARRANGEMENTS				VARCHAR2(80)	80
P84_DELIVERY				VARCHAR2(256)	256
P85_NAME				VARCHAR2(1024)	1024

				char)	
P86_CHANGE_OF_COMMAND				VARCHAR2(80)	80
P87_EXCHANGE_INFO				VARCHAR2(256)	256
P88_OTHER_INFO				VARCHAR2(20)	20
P99_ACKNOWLEDGE				VARCHAR2(20)	20
CREATED_ON				TIMESTAMP	
P1_DATETIME				TIMESTAMP	
P40_DATETIME				TIMESTAMP	
P80_DATE_TIME				TIMESTAMP	
P2_BEARING				VARCHAR2(255)	255
P2_DISTANCE				VARCHAR2(2255)	2255
P2_MARK				VARCHAR2(255)	255
P2_GEOGRAPHICAL_AREA				VARCHAR2(50 char)	50

2.2.2.9 Table ALERT_DISTRIBUTION_RECIPIENTS

Code	Primary	Foreign Key	Mandatory	Data Type	Length
DATABASE_ID	X		X	NUMBER(19)	19
ALERT_DATABASE_ID				NUMBER(19)	19
RECIPIENT_ID		X	X	NUMBER(19)	19
ACKNOWLEDGED				NUMBER(1)	1
MSG_ID				VARCHAR2(40)	40
REQUESTED_ACTION_DETAILS				VARCHAR2(255)	255
DISTRIBUTION_STATUS			X	NUMBER(1)	1

2.2.2.10 Table ALERT_DISTRIBUTION_SITREP

Code	Primary	Foreign Key	Mandatory	Data Type	Length
DATABASE_ID	X	X	X	NUMBER(19)	19
PORT_OF_DEPARTURE				VARCHAR2(5)	5
PORT_OF_DESTINATION				VARCHAR2(5)	5

TOTAL_PERSONS_ON_BOARD				VARCHAR2(5)	5
SHIP_LONGITUDE				VARCHAR2(9)	9
SHIP_LATITUDE				VARCHAR2(9)	9
SITREP_ID				VARCHAR2(30)	30
A_CASUALTY_NAME				VARCHAR2(35)	35
A_CASUALTY_CALL_SIGN				VARCHAR2(7)	7
A_CASUALTY_FLAG				VARCHAR2(2)	2
B_POSITION_LONGITUDE				VARCHAR2(9)	9
B_POSITION_LATITUDE				VARCHAR2(9)	9
C_SITUATION_MESSAGE_TYPE				VARCHAR2(8)	8
C_SITUATION_NOTIFIED_AT				DATE	
C_SITUATION_NATURE				VARCHAR2(33)	33
D_NUMBER_OF_PERSONS				VARCHAR2(5)	5
E_ASSISTANCE_REQUIRED				VARCHAR2(20)	20
F_COORDINATING_RCC				VARCHAR2(80)	80
G_CASUALTY_DESCRIPTION				VARCHAR2(256)	256
H_WEATHER_ON_SCENE				VARCHAR2(20)	20
J_INITIAL_ACTIONS_TAKEN				VARCHAR2(256 char)	256
K_SEARCH_AREA				VARCHAR2(20)	20
L_COORDINATING_INSTRUCTIONS				VARCHAR2(256)	256
M_FUTURE_PLANS				VARCHAR2(20)	20
N_ADDITIONAL_INFO				VARCHAR2(256)	256
CREATED_ON				TIMESTAMP	

2.2.2.11 Table ALERT_DISTRIBUTION_WASTE

Code	Primary	Foreign Key	Mandatory	Data Type	Length
DATABASE_ID	X	X	X	NUMBER(19)	19
VESSEL_FLAG				VARCHAR2(3)	3

WASTE_DELIVERY_DUE_PORT				VARCHAR2(5)	5
ETD				DATE	
INSPECTION_REASON				VARCHAR2(256)	256
DEFICIENCIES				VARCHAR2(256)	256
ACTION_TAKEN				VARCHAR2(256)	256
INSPECTION_AUTH_NAME				VARCHAR2(80)	80
INSPECTION_AUTH_COORDINATES				VARCHAR2(80)	80
NEXT_PORT_OF_CALL				VARCHAR2(5)	5
OTHER_AUTHORITIES				VARCHAR2(80)	80
CREATED_ON				TIMESTAMP	
PHONE				VARCHAR2(20)	20
FAX				VARCHAR2(20)	20
EMAIL				VARCHAR2(50)	50

2.2.2.12 Table ALERT_FEEDBACK

Code	Primary	Foreign Key	Mandatory	Data Type	Length
DATABASE_ID	X		X	NUMBER(19)	19
ALERT_NOTIFICATION_ID		X	X	NUMBER(19)	19
FEEDBACK_ID			X	VARCHAR2(255 char)	255
DISTRIBUTION_FEEDBACK			X	NUMBER(1)	1
DETAILS				VARCHAR2(255 char)	255
AUTHORITY_NAME				VARCHAR2(255 char)	255
LOCODE				VARCHAR2(255 char)	255
PHONE				VARCHAR2(255 char)	255
FAX				VARCHAR2(255)	255

				char)	
EMAIL				VARCHAR2(255 char)	255
URI_TYPE				VARCHAR2(5 char)	5
REP_ACTION_FILE				BLOB	
CREATED_ON			X	TIMESTAMP	
UPDATE_STATUS			X	VARCHAR2(4)	4
DATE_TIME_REPORT_ACTION				TIMESTAMP	
FLAG_STATE_DISTRIBUTION			X	NUMBER(1)	1
SSN_USER_ID				VARCHAR2(60 char)	60

2.2.2.13 Table ALERT_INSURANCE_FAILURE

Code	Primary	Foreign Key	Mandatory	Data Type	Length
DATABASE_ID	X	X	X	NUMBER(19)	19
INCIDENT_DESCRIPTION				VARCHAR2(255)	255

2.2.2.14 Table ALERT_NOTIFICATION_VESSELS

Code	Primary	Foreign Key	Mandatory	Data Type	Length
DATABASE_ID	X	X	X	NUMBER(19)	19
ALERT_DATABASE_ID		X		NUMBER(19)	19
PORT_OF_DEPARTURE				VARCHAR2(20)	20
PORT_OF_DESTINATION				VARCHAR2(20)	20
TOTAL_PERSONS_ON_BOARD				NUMBER(5)	5
CREATED_ON				TIMESTAMP	
IR_LONGITUDE				NUMBER(10)	10
IR_LATITUDE				NUMBER(10)	10
IR_GEOGRAPHICAL_AREA				VARCHAR2(255)	255
IR_BEARING				VARCHAR2(255)	255
IR_DISTANCE				VARCHAR2(255)	255
IR_MARK				VARCHAR2(255)	255
REP_LONGITUDE				NUMBER(10)	10

REP_LATITUDE				NUMBER(10)	10
REP_GEOGRAPHICAL_AREA				VARCHAR2(255)	255
REP_BEARING				VARCHAR2(255)	255
REP_DISTANCE				VARCHAR2(255)	255
REP_MARK				VARCHAR2(255)	255
DESCRIBE_VESSEL				VARCHAR2(255)	255

2.2.2.15 Table ALERT_NOTIFICATIONS

Code	Primary	Foreign Key	Mandatory	Data Type	Length
DATABASE_ID	X	X	X	NUMBER(19)	19
INCIDENT_TYPE				VARCHAR2(30 char)	30
MARITIMEAUTHORITYNAME				VARCHAR2(50 char)	50
MARITIMEAUTHORITYEMAIL				VARCHAR2(50 char)	50
MARITIMEAUTHORITYPHONE				VARCHAR2(20 char)	20
MARITIMEAUTHORITYFAX				VARCHAR2(20 char)	20
LOCATION_CODE				VARCHAR2(5 char)	5
CREATED_ON				TIMESTAMP	
DISTRIBUTION_IR			X	NUMBER(1)	1
SSN_USER_ID				VARCHAR2(60 char)	60
REPORT_SEQUENCE				NUMBER	
UPDATED_STATUS_REASON				VARCHAR2(1 char)	1
INCIDENT_ID				VARCHAR2(20 char)	20
FLAG_STATE_DISTRIBUTION			X	NUMBER(1)	1

2.2.2.16 Table ALERT_PILOT_OR_PORT_REPORT

Code	Primary	Foreign Key	Mandatory	Data Type	Length
DATABASE_ID	X	X	X	NUMBER(19)	19
INCIDENT_DESCRIPTION				VARCHAR2(255)	255

2.2.2.17 Table ALERT_VTS_RULES_INFRINGEMENT

Code	Primary	Foreign Key	Mandatory	Data Type	Length
DATABASE_ID	X	X	X	NUMBER(19)	19
INCIDENT_DESCRIPTION				VARCHAR2(255)	255

2.2.2.18 Table APPLICATION_PARAMETERS

Code	Primary	Foreign Key	Mandatory	Data Type	Length
CODE	X		X	VARCHAR2(50 char)	50
VALUE				VARCHAR2(1224 char)	1224
APPLICATION				VARCHAR2(50 char)	50
IS_ACTIVATED				NUMBER(1)	1
COMMENTS				VARCHAR2(512 char)	512

2.2.2.19 Table AREAS

Code	Primary	Foreign Key	Mandatory	Data Type	Length
DATABASE_ID	X		X	NUMBER(19)	19
LAST_UPDATED_ON				TIMESTAMP	
AREA_NAME				VARCHAR2(50 char)	50
CREATED_ON				TIMESTAMP	
DESCRIPTION				VARCHAR2(50 char)	50
SDO_SHAPE				MDSYS.SDO_GEOMETRY	
AREA_TYPE			X	VARCHAR2(10)	10

2.2.2.20 Table CONSIGNMENT_NOTIFICATION_MRN

Code	Primary	Foreign Key	Mandatory	Data Type	Length
CN_DATABASE_ID		X	X	NUMBER(19)	19
MRN			X	VARCHAR2(18 char)	18

2.2.2.21 Table CONSIGNMENT_NOTIFICATION_TDN

Code	Primary	Foreign Key	Mandatory	Data Type	Length
CN_DATABASE_ID		X	X	NUMBER(19)	19
TDN			X	VARCHAR2(35 char)	35

2.2.2.22 Table CONSIGNMENT_NOTIFICATION_UCR

Code	Primary	Foreign Key	Mandatory	Data Type	Length
CN_DATABASE_ID		X	X	NUMBER(19)	19
UCR			X	NUMBER(17)	17

2.2.2.23 Table CONSIGNMENT_NOTIFICATIONS

Code	Primary	Foreign Key	Mandatory	Data Type	Length
DATABASE_ID	X		X	NUMBER(19)	19
STATUS_OF_GOODS				NUMBER(4)	4
MIXED_DESCRIPTION				VARCHAR2(256 char)	256
VOYAGE_DATABASE_ID		X		NUMBER(19)	19
REGISTERED_VESSEL_ID		X		NUMBER(19)	19
PORTOFCALL				VARCHAR2(5 char)	5
EORI				VARCHAR2(35 char)	35
RISK_STATUS				VARCHAR2(5 char)	5
CRN				VARCHAR2(35 char)	35

2.2.2.24 Table COUNTRIES

Code	Primary	Foreign Key	Mandatory	Data Type	Length
DATABASE_ID	X		X	NUMBER(19)	19
LAST_UPDATED_ON			X	TIMESTAMP	
COUNTRY_CODE			X	VARCHAR2(2 char)	2
COUNTRY_NAME				VARCHAR2(50 char)	50
IS_EUMEMBER			X	NUMBER(1)	1

CREATED_ON				TIMESTAMP	
IS_SSN				NUMBER(1)	1
BB_REPORT_FLG			X	NUMBER(1)	1

2.2.2.25 Table COUNTRIES_PER_AREA

Code	Primary	Foreign Key	Mandatory	Data Type	Length
COUNTRY_ID	X	X	X	NUMBER(19)	19
AREA_ID	X	X	X	NUMBER(19)	19

2.2.2.26 Table COUNTRIES_VP_AREAS

Code	Primary	Foreign Key	Mandatory	Data Type	Length
COUNTRY_ID	X	X	X	NUMBER(19)	19
AREA_ID	X	X	X	NUMBER(19)	19
AREA_FLAG	X		X	NUMBER(10)	10
DEFAULT_AREA				NUMBER(1)	1

2.2.2.27 Table EXEMPTIONS

Code	Primary	Foreign Key	Mandatory	Data Type	Length
DATABASE_ID	X		X	NUMBER(19)	19
COMPANY_NAME				VARCHAR2(50 char)	50
GRANTING_COUNTRY_ID		X		NUMBER(19)	19
CONTACT_FIRST_NAME				VARCHAR2(50 char)	50
CONTACT_LAST_NAME				VARCHAR2(50 char)	50
CONTACT_EMAIL				VARCHAR2(50 char)	50
CONTACT_PHONE				VARCHAR2(20 char)	20
CONTACT_FAX				VARCHAR2(20)	20

				char)	
CONTACT_LOCATION_ID		X		NUMBER(19)	19
VALID_FROM				TIMESTAMP	
VALID_TO				TIMESTAMP	
MODIFIER_ID		X		NUMBER(19)	19
UPDATED_ON				TIMESTAMP	
NOTIFICATION _TYPE			X	NUMBER(2)	2
EXEMPTION_ID				VARCHAR2(36 chars)	36
REPORTED_VESSEL_FLAG				VARCHAR2(2 chars)	2
GRANTING_AUTHORITY_NAME				VARCAR2(100 chars)	100
GRANTING_AUTHORITY_TYPE				VARCHAR2(20 chars)	20

2.2.2.28 Table EXEMPTIONS_LOCODES

Code	Primary	Foreign Key	Mandatory	Data Type	Length
EXEMPTION_ID	X	X	X	NUMBER(19)	19
LOCATION_ID	X	X	X	NUMBER(19)	19

2.2.2.29 Table GROUP_ROLES

Code	Primary	Foreign Key	Mandatory	Data Type	Length
G_NAME	X	X	X	VARCHAR2(30)	30
RL_CODE	X	X	X	VARCHAR2(35 char)	35

2.2.2.30 Table GROUPS

Code	Primary	Foreign Key	Mandatory	Data Type	Length
G_NAME	X		X	VARCHAR2(30 char)	30
G_DESCRIPTION				VARCHAR2(50 char)	50
G_PROVIDER				VARCHAR2(20 char)	20

G_LEVEL				NUMBER(1)	1
---------	--	--	--	-----------	---

2.2.2.31 Table INCIDENT_NOTIFICATIONS

Code	Primary	Foreign Key	Mandatory	Data Type	Length
ALERT_DATABASE_ID		X	X	NUMBER(19)	19
NOTIFICATION_DATABASE_ID		X	X	NUMBER(19)	19
ALERT_VESSEL_NOTIFICATION_ID		X		NUMBER(19)	19
FEEDBACK_DATABASE_ID		X		NUMBER(19)	19

2.2.2.32 Table INFORMATION_SOURCES

Code	Primary	Foreign Key	Mandatory	Data Type	Length
DATABASE_ID	X		X	NUMBER(19)	19
INFORMATION_TYPE			X	VARCHAR2(30 char)	30
CS_FIRST_NAME				VARCHAR2(50 char)	50
CS_LAST_NAME				VARCHAR2(50 char)	50
CS_EMAIL				VARCHAR2(50 char)	50
CS_PHONE				VARCHAR2(20 char)	20
CS_FAX				VARCHAR2(20 char)	20
LOCATION_CODE				VARCHAR2(5 char)	5
URI_TYPE				VARCHAR2(5 char)	5
URI				VARCHAR2(256 char)	256
CREATED_ON				TIMESTAMP	
NOTIFICATION_ID		X		NUMBER(19)	19
HAZMAT_TYPE				NUMBER(1)	1
DEPARTURE				NUMBER(1)	1

2.2.2.33 Table LOCATION_IMAGES

Code	Primary	Foreign Key	Mandatory	Data Type	Length
IMG_ID	X		X	NUMBER(19)	19
LOCATION_DATABASE_ID		X	X	NUMBER(19)	19

IMG_DESC				VARCHAR2(50 char)	50
IMG_BLOB				BLOB	
IMG_TYPE				VARCHAR2(4 char)	4
URI_SOURCE				VARCHAR2(256 char)	256
URI_PROTOCOL				VARCHAR2(10 char)	10
CREATED_ON				TIMESTAMP	
SOURCE				VARCHAR2(10 char)	10

2.2.2.34 Table LOCATIONS

Code	Primary	Foreign Key	Mandatory	Data Type	Length
DATABASE_ID	X		X	NUMBER(19)	19
LAST_UPDATED_ON			X	TIMESTAMP	
LOCATION_CODE			X	VARCHAR2(5 char)	5
CREATED_ON				TIMESTAMP	
LOCATION_NAME				VARCHAR2(50 char)	50
LOCATION_NAME_NAT				VARCHAR2(50 char)	50
LOCATION_NAME_WID				VARCHAR2(50 char)	50
TERMINAL_CODE				VARCHAR2(3 char)	3
LONGITUDE				NUMBER(10)	10
LATITUDE				NUMBER(10)	10
IS_ENABLED			X	NUMBER(1)	1
IS_EUMEMBER			X	NUMBER(1)	1
IS_UNLOCATION			X	NUMBER(1)	1
COUNTRY_ID		X		NUMBER(19)	19
IS_VALIDATED				NUMBER(1)	1
CREATOR_UNIQUE_ID				VARCHAR2(15 char)	15
MODIFIER_UNIQUE_ID				VARCHAR2(15 char)	15
DEACTIVATED_ON				TIMESTAMP	
DEACTIVATE_UNIQUE_ID				VARCHAR2(15 char)	15
COMMENTS				VARCHAR2(256 char)	256
ATERMINAL_NO				CHAR(5 char)	5

BTERMINAL_POS				VARCHAR2(10 char)	10
---------------	--	--	--	-------------------	----

2.2.2.35 Table LOCATIONS_NAMES

Code	Primary	Foreign Key	Mandatory	Data Type	Length
DATABASE_ID	X		X	NUMBER(19)	19
LOCATION_ID		X		NUMBER(19)	19
LOCATION_NAME				VARCHAR2(50 char)	50
CREATED_ON				TIMESTAMP	
LAST_UPDATED_ON				TIMESTAMP	

2.2.2.36 Table LOCODES_NAMES_STG

Code	Primary	Foreign Key	Mandatory	Data Type	Length
FILE_ID				NUMBER(19)	19
LOCATION_CODE				VARCHAR2(5)	5
CREATED_ON				TIMESTAMP	
UPDATED_ON				TIMESTAMP	
LOCATION_NAME				VARCHAR2(50)	50
USER_ID				VARCHAR2(30)	30
EXISTS_FLAG				NUMBER(1)	1
UPDATE_FLAG				NUMBER(1)	1
FINALISE_FLAG				NUMBER(1)	1
DATABASE_ID				NUMBER(19)	19
OFFICIAL_FLAG				NUMBER(1)	1

2.2.2.37 Table LOG_XML_CONTENTS

Code	Primary	Foreign Key	Mandatory	Data Type	Length
DATABASE_ID	X		X	NUMBER	
TYPE			X	VARCHAR2(20 char)	20
XML_CONTENT			X	CLOB	
TSTAMP			X	DATE	

MSREFID				VARCHAR2(36 char)	36
SSN_LOG_EXIST				NUMBER(1)	1
MESSAGE_TYPE				VARCHAR2(255 char)	255
SENDER				VARCHAR2(255 char)	255
HTTP_STATUS				VARCHAR2(10 char)	10
XML_PARSING_ERROR				VARCHAR2(255 char)	255

2.2.2.38 Table MAM_ALERT_EMAILS

Code	Primary	Foreign Key	Mandatory	Data Type	Length
MAM_CONFIG_ID		X	X	NUMBER(19)	19
EMAIL				VARCHAR2(50 char)	50

2.2.2.39 Table MAM_ALERTS

Code	Primary	Foreign Key	Mandatory	Data Type	Length
DATABASE_ID	X		X	NUMBER(19)	19
MAM_CONFIG_ID			X	NUMBER(19)	19
MESSAGE_TYPE				NUMBER(2)	2
INFORMATION_TYPE				VARCHAR2(30 char)	30
INCIDENT_TYPE				VARCHAR2(20 char)	20
ERROR_DESC				VARCHAR2(256 char)	256
DATED_AT				DATE	
CREATED_ON				TIMESTAMP	

2.2.2.40 Table MAM_CONFIG

Code	Primary	Foreign Key	Mandatory	Data Type	Length
DATABASE_ID	X		X	NUMBER(19)	19
USER_DATABASE_ID		X		NUMBER(19)	19
USER_ID				VARCHAR2(15 char)	15
USER_NAME				VARCHAR2(50 char)	50
COUNTRY_ID				NUMBER(19)	19

COUNTRY_NAME				VARCHAR2(50 char)	50
MESSAGE_TYPE_PORT				NUMBER(2)	2
MESSAGE_TYPE_SHIP				NUMBER(2)	2
MESSAGE_TYPE_HAZMAT				NUMBER(2)	2
MESSAGE_TYPE_ALERT			X	NUMBER(2)	2
ACTIVITY_TYPE				NUMBER(1)	1
TIME_FRAME				NUMBER(2)	2
DATE_FROM				TIMESTAMP	
DATE_TO				TIMESTAMP	
ENABLED				NUMBER(1)	1
LAST_EXECUTION_TIME				TIMESTAMP WITH TIME ZONE	
NUM_OF_FAULTURES				NUMBER(10)	10
MESSAGE_TYPE_SECURITY				NUMBER(2)	2
ALERT_THRESHOLD				NUMBER(3)	3
MESSAGE_TYPE_PORTPLUS				NUMBER(2)	2
NUM_OF_EXECUTIONS				NUMBER(10)	10
NOTICE_MECHANISM			X	NUMBER(1)	1

2.2.2.41 Table MAM_STATISTICS

Code	Primary	Foreign Key	Mandatory	Data Type	Length
DATABASE_ID	X		X	NUMBER(19)	19
MAM_CONFIG_ID			X	NUMBER(19)	19
MESSAGE_TYPE				NUMBER(2)	2
INFORMATION_TYPE				VARCHAR2(30 char)	30
INCIDENT_TYPE				VARCHAR2(20 char)	20
NO_OF_MESSAGES				NUMBER(5)	5
DATED_AT				DATE	
CREATED_ON				TIMESTAMP	

2.2.2.42 Table MAM_STATUS

Code	Primary	Foreign Key	Mandatory	Data Type	Length
DATABASE_ID	X		X	NUMBER(19)	19
MAM_CONFIG_ID			X	NUMBER(19)	19
USER_DATABASE_ID			X	NUMBER(19)	19
MESSAGE_TYPE				NUMBER(2)	2
MESSAGE_STATUS				NUMBER(1)	1
NOTIFICATION_ID				NUMBER(19)	19
RECEIVED_AT				TIMESTAMP	
CREATED_ON			X	TIMESTAMP	
NUM_OF_FAULURES				NUMBER(10)	10
RESPONSE_ID				NUMBER(19)	19
INFORMATION_TYPE				VARCHAR2(30 char)	30
NUM_OF_MESSAGES			X	NUMBER(10)	10
INCIDENT_TYPE				VARCHAR2(20 char)	20

2.2.2.43 Table MARITIME_ID_DIGITS

Code	Primary	Foreign Key	Mandatory	Data Type	Length
DIGITS	X		X	VARCHAR2(3 char)	3
COUNTRY_NAME				VARCHAR2(256 char)	256
COUNTRY_FLAG				VARCHAR2(256 char)	256
COUNTRY_CODE				VARCHAR2(2 char)	2

2.2.2.44 Table MESSAGE_TYPES

Code	Primary	Foreign Key	Mandatory	Data Type	Length
TYPE_ID	X		X	NUMBER(2)	2
TYPE_CODE				VARCHAR2(50 char)	50
TYPE_DESCRIPTION				VARCHAR2(100 char)	100

2.2.2.45 Table MRS

Code	Primary	Foreign Key	Mandatory	Data Type	Length
MRS_ID	X		X	NUMBER(19)	19
MRS_IDENTIFICATION				VARCHAR2(50)	50

2.2.2.46 Table MRS_COUNTRIES

Code	Primary	Foreign Key	Mandatory	Data Type	Length
MRS_ID		X		NUMBER(19)	19
COUNTRY_ID		X		NUMBER(19)	19

2.2.2.47 Table MRS_CST

Code	Primary	Foreign Key	Mandatory	Data Type	Length
CST_ID	X		X	VARCHAR2(30)	30
MRS_ID		X		NUMBER(19)	19
PARTIES_ID		X		NUMBER(19)	19

2.2.2.48 Table MRS_NOTIFICATIONS

Code	Primary	Foreign Key	Mandatory	Data Type	Length
DATABASE_ID	X		X	NUMBER(19)	19
ETA_TO_PORT				TIMESTAMP	
NUM_OF_PASSENGERS				NUMBER(10)	10
LONGITUDE				NUMBER(10)	10
LATITUDE				NUMBER(10)	10
LOCATION_CODE				VARCHAR2(5 char)	5
CREATED_ON				TIMESTAMP	
LONGITUDE_AIS				NUMBER(10)	10
LATITUDE_AIS				NUMBER(10)	10
MRS_ID		X		NUMBER(19)	19

CST_ID				VARCHAR2(30)	30
ANY_DG				VARCHAR2(1)	1
REPORTING_DT				TIMESTAMP	
COG				NUMBER	
SOG				NUMBER	
NAVIGATIONAL_STATUS				NUMBER(2)	2
BUNKER_CHARS				VARCHAR2(255)	255
BUNKER_QUANTITY				VARCHAR2(18)	18
CARGO_TYPE				VARCHAR2(255)	255
AOI				VARCHAR2(350)	350
CCD_LAST_NAME				VARCHAR2(50)	50
CCD_FIRST_NAME				VARCHAR2(50)	50
CCD_LOCODE				VARCHAR2(50)	50
CCD_FAX				VARCHAR2(20)	20
CCD_PHONE				VARCHAR2(20)	20
CCD_EMAIL				VARCHAR2(50)	50

2.2.2.49 Table MRS_NOTIFICATIONS_DG

Code	Primary	Foreign Key	Mandatory	Data Type	Length
DATABASE_ID		X		NUMBER(19)	19
IMO_CLASS				VARCHAR2(7)	7
QUANTITY				VARCHAR2(18)	18

2.2.2.50 Table MSS_NOTIFICATIONS_DETAILS

Code	Primary	Foreign Key	Mandatory	Data Type	Length
DATABASE_ID			X	NUMBER(19)	19
MSG_ID			X	VARCHAR2(36 char)	36
SENDER_ID			X	NUMBER(19)	19
TEST_CASE_ID				VARCHAR2(8)	8

				char)	
PROTOCOL				VARCHAR2(100 char)	100
REPORTED_VESSEL_NAME				VARCHAR2(35 char)	35
REPORTED_VESSEL_CALL_SIGN				VARCHAR2(7 char)	7
REGISTERED_VESSEL_ID				NUMBER(19)	19
CREATED_ON				TIMESTAMP	
SENT_AT				TIMESTAMP	
REPORTED_IMO_NUMBER				NUMBER(7)	7
REPORTED_MMSI				NUMBER(9)	9
MESSAGE_TYPE				NUMBER(2)	2
HAS_NOTIFICATIONS				NUMBER	
EXIST_REPLY				NUMBER	
REPLY_XML_CONTENTS				VARCHAR2(2000 char)	2000

2.2.2.51 Table NOTIFICATIONS

Code	Primary	Foreign Key	Mandatory	Data Type	Length
DATABASE_ID	X	X	X	NUMBER(19)	19
MSG_ID				VARCHAR2(40 char)	40
SENDER_ID		X		NUMBER(19)	19
TEST_CASE_ID				VARCHAR2(8 char)	8
PROTOCOL				VARCHAR2(100 char)	100
REPORTED_VESSEL_NAME				VARCHAR2(35 char)	35
REPORTED_VESSEL_CALL_SIGN				VARCHAR2(7 char)	7
REGISTERED_VESSEL_ID		X		NUMBER(19)	19
CREATED_ON				TIMESTAMP	

SENT_AT				TIMESTAMP	
REPORTED_IMO_NUMBER				NUMBER(7)	7
REPORTED_MMSI				NUMBER(9)	9
MESSAGE_TYPE				NUMBER(2)	2
REPORTED_VESSEL_FLAG				VARCHAR2(2 char)	2
PORTOFCALL				VARCHAR2(5 char)	5
REPORTED_IR_NUMBER				VARCHAR2(12 char)	12

2.2.2.52 Table NOTIFICATIONS_PARAMETERS

Code	Primary	Foreign Key	Mandatory	Data Type	Length
PAR_NAME			X	VARCHAR2(50)	50
PAR_VALUE				NUMBER(4)	4
MESSAGE_TYPE			X	NUMBER(2)	2

2.2.2.53 Table PARTIES

Code	Primary	Foreign Key	Mandatory	Data Type	Length
DATABASE_ID	X		X	NUMBER(19)	19
UNIQUE_ID				VARCHAR2(15 char)	15
PARTY_TYPE			X	VARCHAR2(15 char)	15
CONTACT_FIRST_NAME				VARCHAR2(50 char)	50
CONTACT_LAST_NAME				VARCHAR2(50 char)	50
CONTACT_EMAIL				VARCHAR2(50 char)	50
CONTACT_PHONE				VARCHAR2(20 char)	20
CONTACT_FAX				VARCHAR2(20 char)	20
PARENT_ID		X		NUMBER(19)	19
MODIFIER_UNIQUE_ID				VARCHAR2(15 char)	15
CREATED_ON			X	TIMESTAMP	
ACTIVE				NUMBER(1)	1

UPDATED_ON				TIMESTAMP	
CREATOR_UNIQUE_ID				VARCHAR2(15 char)	15
HAS_NOTIFICATION				NUMBER(1)	1
LOCATION_ID		X		NUMBER	
NAME				VARCHAR2(50 char)	50
PROVIDER_URL				VARCHAR2(256 char)	256
REQUESTOR_URL				VARCHAR2(256 char)	256
DEP_NAME				VARCHAR2(50)	50
DEP_POSTAL_ADDRESS				VARCHAR2(50)	50
DEP_CONTACT_FIRST_NAME				VARCHAR2(50)	50
DEP_CONTACT_LAST_NAME				VARCHAR2(50)	50
DEP_EMAIL				VARCHAR2(50)	50
DEP_PHONE				VARCHAR2(20)	20
DEP_FAX				VARCHAR2(20)	20
GROUP_NAME		X		VARCHAR2(30 char)	30
ASSOC_LOCODES_FLG				NUMBER(1)	1
XML_ALERT_WARNING				NUMBER(1)	1
FMC_HTTP_METHOD				VARCHAR2(4 char)	4
ACTIVE_END_DT				TIMESTAMP	
PROXY_ID		X		NUMBER(19)	19
COMMENTS				VARCHAR2(512 char)	512

2.2.2.54 Table PARTIES_ASSOC_AREAS

Code	Primary	Foreign Key	Mandatory	Data Type	Length
PARTIES_ID	X	X	X	NUMBER(19)	19
AREAS_ID	X	X	X	NUMBER(19)	19
AREA_FLAG	X		X	NUMBER(10)	10

2.2.2.55 Table PARTIES_ASSOC_LOCODES

Code	Primary	Foreign Key	Mandatory	Data Type	Length
PARTIES_ID	X	X	X	NUMBER(19)	19
LOCATIONS_ID	X	X	X	NUMBER(19)	19

2.2.2.56 Table PARTIES_INTERFACES

Code	Primary	Foreign Key	Mandatory	Data Type	Length
PARTY_DATABASE_ID		X		NUMBER(19)	19
PROTOCOL				NUMBER(1)	1
PROVIDER_URL				VARCHAR2(256 char)	256
REQUESTOR_URL				VARCHAR2(256 char)	256
CERT_NAME				VARCHAR2(100 char)	100
DATABASE_ID	X		X	NUMBER(19)	19
PROTOCOL_DESC				VARCHAR2(50)	50

2.2.2.57 Table PARTIES_ROLES

Code	Primary	Foreign Key	Mandatory	Data Type	Length
PARTY_DATABASE_ID	X	X	X	NUMBER(19)	19
RL_CODE	X	X	X	VARCHAR2(35 char)	35

2.2.2.58 Table PERMISSIONS

Code	Primary	Foreign Key	Mandatory	Data Type	Length
PARTY_DATABASE_ID		X	X	NUMBER(19)	19
NAME				VARCHAR2(50 char)	50
T_CODE		X	X	VARCHAR2(50 char)	50
RESTRICTION_FLG			X	NUMBER(1)	1
RL_CODE				VARCHAR2(35 char)	35
DATABASE_ID	X		X	NUMBER(19)	19
ASSOC_LOCODES_FLG				NUMBER(1)	1

2.2.2.59 Table PERMISSIONS_ASSOC_AREAS

Code	Primary	Foreign Key	Mandatory	Data Type	Length
PERMISSIONS_ID	X	X	X	NUMBER(19)	19
AREAS_ID	X		X	NUMBER(19)	19

2.2.2.60 Table PERMISSIONS_ASSOC_LOCODES

Code	Primary	Foreign Key	Mandatory	Data Type	Length
PERMISSIONS_ID	X	X	X	NUMBER(19)	19
LOCATIONS_ID	X		X	NUMBER(19)	19

2.2.2.61 Table PORTPLUS_CALL_PURPOSES

Code	Primary	Foreign Key	Mandatory	Data Type	Length
DATABASE_ID		X	X	NUMBER(19)	19
CALL_PURPOSE_CODE			X	NUMBER(9)	9

2.2.2.62 Table PORTPLUS_CREW_PASSENGERS

Code	Primary	Foreign Key	Mandatory	Data Type	Length
DATABASE_ID	X	X	X	NUMBER(19)	19
DEPARTURE	X		X	NUMBER(1)	1
NUMBER_OF_CREW				NUMBER(10)	10
NUMBER_OF_PASSENGERS				NUMBER(10)	10
STOWAWAYS				NUMBER(1)	1

2.2.2.63 Table PORTPLUS_INMARSAT_CALL_NUMBERS

Code	Primary	Foreign Key	Mandatory	Data Type	Length
DATABASE_ID		X	X	NUMBER(19)	19
INMARSAT_NUMBER				VARCHAR2(50 char)	50

2.2.2.64 Table PORTPLUS_NOTIFICATIONS

Code	Primary	Foreign Key	Mandatory	Data Type	Length
DATABASE_ID	X	X	X	NUMBER(19)	19
UPDATE_STATUS				VARCHAR2(1 char)	1
SHIPCALLID				VARCHAR2(36 char)	36
LASTPORT				VARCHAR2(5 char)	5
NEXTPORT				VARCHAR2(5 char)	5
PORTOFCALL				VARCHAR2(5 char)	5
POSITION_IN_PORTOFCALL				VARCHAR2(15 char)	15
ATA_TO_PORTOFCALL				TIMESTAMP	
ATD_FROM_PORTOFCALL				TIMESTAMP	
ETA_TO_NEXTPORT				TIMESTAMP	
ETA_TO_PORTOFCALL				TIMESTAMP	
ETD_FROM_LASTPORT				TIMESTAMP	
ETD_FROM_PORTOFCALL				TIMESTAMP	
POSSIBLE_ANCHORAGE				VARCHAR2(1 char)	1
PLANNED_OPERATIONS				VARCHAR2(256 char)	256
PLANNED_WORKS				VARCHAR2(256 char)	256
SHIP_CONFIGURATION				VARCHAR2(10 char)	10
CARGO_VOLUME_NATURE				VARCHAR2(256 char)	256
CONDITION_CARGO_BALLAST_TANKS				VARCHAR2(256 char)	256
ANCHORAGE				VARCHAR2(1 char)	1
CREATED_ON				TIMESTAMP	
POB_VOYAGE_TOWARDS_PORTOFCALL				NUMBER(5)	5
BRIEF_CARGO_DESC				VARCHAR2(256)	256

POB_VOYAGE_TOWAR DS_NEXT_PORT				NUMBER(5)	5
----------------------------------	--	--	--	-----------	---

2.2.2.65 Table PORTPLUS_NOTIFICATIONS_DG

Code	Primary	Foreign Key	Mandatory	Data Type	Length
DATABASE_ID	X	X	X	NUMBER(19)	19
DEPARTURE	X	X	X	NUMBER(1)	1
DG_CLASSIFICATION	X		X	VARCHAR2(20 char)	20

2.2.2.66 Table PORTPLUS_NOTIFICATIONS_HAZMAT

Code	Primary	Foreign Key	Mandatory	Data Type	Length
DATABASE_ID		X	X	NUMBER(19)	19
DEPARTURE		X	X	NUMBER(1)	1
HAZMATONBOARD				VARCHAR2(1 char)	1
INF_SHIP_CLASS				VARCHAR2(4 char)	4

2.2.2.67 Table PORTPLUS_NOTIFICATIONS_MSGID

Code	Primary	Foreign Key	Mandatory	Data Type	Length
DATABASE_ID	X	X	X	NUMBER(19)	19
UPD_MSG_ID	X		X	VARCHAR2(36 char)	36

2.2.2.68 Table PORTPLUS_SECURITY

Code	Primary	Foreign Key	Mandatory	Data Type	Length
DATABASE_ID	X	X	X	NUMBER(19)	19
CURRENT_SHIP_SECURITY_LEVEL				VARCHAR2(20 chars)	20
AGENCY_NAME				VARCHAR2(256 chars)	256
BUSINESS_PHONE				VARCHAR2(20 chars)	20

CONTACT_FAX				VARCHAR2(20 chars)	20
CONTACT_EMAIL				VARCHAR2(256 chars)	256

2.2.2.69 Table PORTPLUS_SHIP_ITENERARY

Code	Primary	Foreign Key	Mandatory	Data Type	Length
DATABASE_ID		X		NUMBER(19)	19
DEPARTURE		X		NUMBER(1)	1
PORT_OF_CALL				VARCHAR2(5 Char)	5
DATE_OF_ARRIVAL				DATE	

2.2.2.70 Table PORTPLUS_SHIP_PARTICULARS

Code	Primary	Foreign Key	Mandatory	Data Type	Length
DATABASE_ID	X	X	X	NUMBER(19)	19
SHIP_TYPE				VARCHAR2(3 char)	3
GROSS_TONAGE				NUMBER	
CERTIFICATE_OF_REGISTRY_DATE				TIMESTAMP	
CERTIFICATE_OF_REGISTRY_NUMBER				VARCHAR2(35 char)	35
CERTIFICATE_OF_REGISTRY_PORT				VARCHAR2(5 char)	5
CERTIFICATE_OF_REGISTRY_PNAME				VARCHAR2(50 char)	50
MNG_IMO_COMPANY_ID				NUMBER(7)	7
COMPANY_NAME				VARCHAR2(70 char)	70

2.2.2.71 Table PORTPLUS_WASTE

Code	Primary	Foreign Key	Mandatory	Data Type	Length
DATABASE_ID	X	X	X	NUMBER(19)	19
LAST_PORT_DELIVERED				VARCHAR2(5)	5

LAST_PORT_DELIVERED_DATE				TIMESTAMP	
WASTE_DELIVERY_STATUS				VARCHAR2(50 chars)	50

2.2.2.72 Table PROCESSED_ENVELOPS

Code	Primary	Foreign Key	Mandatory	Data Type	Length
ENVELOP_ID	X		X	VARCHAR2(200)	200
ENVELOP_TIMESTAMP			X	NUMBER	
ENVELOP_PROCESSOR	X		X	VARCHAR2(200)	200

2.2.2.73 Table PROXIES

Code	Primary	Foreign Key	Mandatory	Data Type	Length
DATABASE_ID	X		X	NUMBER(19)	19
DESCRIPTION				VARCHAR2(100 char)	100
PROXY_TYPE			X	CHAR	
STIRES_TX			X	CHAR(1 char)	1
MODIFIER_UNIQUE_ID				VARCHAR2(15 char)	15
CREATED_ON			X	TIMESTAMP	
UPDATED_ON				TIMESTAMP	
CREATOR_UNIQUE_ID				VARCHAR2(15 char)	15

2.2.2.74 Table PROXIES_SOURCES

Code	Primary	Foreign Key	Mandatory	Data Type	Length
PROXY_ID	X	X	X	NUMBER(19)	19
SOURCE	X		X	VARCHAR2(50 char)	50
PREF_MESSAGES				VARCHAR2(512 char)	512
PREF_SHIP_TYPES				VARCHAR2(20 char)	20
PREF_SHIP_FLAGS				VARCHAR2(1200 char)	1200
PREF_DATA_AGE				NUMBER(6)	6
POLICY_MESSAGES				VARCHAR2(512 char)	512

2.2.2.75 Table ROLES

Code	Primary	Foreign Key	Mandatory	Data Type	Length
RL_CODE	X		X	VARCHAR2(35 char)	35
RL_DESCRIPTION				VARCHAR2(256 char)	256

2.2.2.76 Table ROLES_TASKS

Code	Primary	Foreign Key	Mandatory	Data Type	Length
RL_CODE	X	X	X	VARCHAR2(35 char)	35
T_CODE	X	X	X	VARCHAR2(50 char)	50
RESTR_AREA_FLG				NUMBER(1)	1
RESTR_AREA_LEVEL				NUMBER(1)	1

2.2.2.77 Table SAT_SERVICE_EMAILS

Code	Primary	Foreign Key	Mandatory	Data Type	Length
SAT_SERVICE_ID		X		NUMBER(19)	19
EMAIL				VARCHAR2(50 char)	50

2.2.2.78 Table SAT_SERVICES_CONFIG

Code	Primary	Foreign Key	Mandatory	Data Type	Length
DATABASE_ID	X		X	NUMBER(19)	19
USER_DATABASE_ID		X		NUMBER(19)	19
SAT_VESSELS_ID		X		NUMBER(19)	19
MESSAGE_TYPE				NUMBER(2)	2
SERVICE_TYPE				NUMBER(1)	1
DATE_FROM				TIMESTAMP	
DATE_TO				TIMESTAMP	
ENABLED				NUMBER(1)	1

2.2.2.79 Table SAT_VESSELS

Code	Primary	Foreign Key	Mandatory	Data Type	Length
DATABASE_ID	X		X	NUMBER(19)	19
VESSEL_ID		X		NUMBER(19)	19
VESSEL_TYPE				NUMBER(1)	1

2.2.2.80 Table SET_BRANCHEPATH

Code	Primary	Foreign Key	Mandatory	Data Type	Length
SET_ID_I				VARCHAR2(20)	20
PATH_ID_I				VARCHAR2(20)	20
SET_ID_II				VARCHAR2(20)	20
SET_ID_LA				NUMBER	
SET_ID_LB				NUMBER	
SET_ID_LC				NUMBER	
SET_ID_LD				NUMBER	
PATH_ID_LA				NUMBER	
PATH_ID_LB				NUMBER	
PATH_ID_LC				NUMBER	
SET_ID_LLA				NUMBER	
SET_ID_LLB				NUMBER	
SET_ID_LLC				NUMBER	
SET_ID_LLD				NUMBER	

2.2.2.81 Table SET_ROUTEPOINTS

Code	Primary	Foreign Key	Mandatory	Data Type	Length
DATABASE_ID	X		X	NUMBER	
ROUT_POINT				VARCHAR2(20)	20
SET_ID_LA				NUMBER	

SET_ID_LB				NUMBER	
SET_ID_LC				NUMBER	
SET_ID_LD				NUMBER	
LATITUDE				NUMBER	
LOGNITUDE				NUMBER	
COMMENTS				VARCHAR2(256)	256

2.2.2.82 Table SET_RP_LOCODES

Code	Primary	Foreign Key	Mandatory	Data Type	Length
SET_DATABASE_ID		X		NUMBER	
LOCODE_DATABASE_ID		X		NUMBER	

2.2.2.83 Table SHIP_PARTICULARS

Code	Primary	Foreign Key	Mandatory	Data Type	Length
DATABASE_ID	X		X	NUMBER(19)	19
MSG_ID				VARCHAR2(36 char)	36
SENDER_ID		X		NUMBER(19)	19
TEST_CASE_ID				VARCHAR2(8 char)	8
PROTOCOL				VARCHAR2(100 char)	100
REPORTED_IMO_NUMBER				NUMBER(7)	7
REPORTED_MMSI				NUMBER(9)	9
REPORTED_VESSEL_CALL_SIGN				VARCHAR2(7 char)	7
REPORTED_VESSEL_NAME				VARCHAR2(35 char)	35
REPORTED_VESSEL_FLAG				VARCHAR2(2 char)	2
REGISTERED_VESSEL_ID		X		NUMBER(19)	19
CREATED_ON				TIMESTAMP	

SENT_AT				TIMESTAMP	
MESSAGE_TYPE				NUMBER(2)	2
PROVIDER_URL				VARCHAR2(1024 char)	1024

2.2.2.84 Table SHIPPING_COMPANIES

Code	Primary	Foreign Key	Mandatory	Data Type	Length
DATABASE_ID	X		X	NUMBER(19)	19
COMPANY_NAME			X	VARCHAR2(50 char)	50
IMO_COMPANY_NUMBER				NUMBER(7)	7
SHIPPING_CRT_NUMBER				VARCHAR2(20 char)	20
SHIPPING_CRT_ISS_AUTH				VARCHAR2(50 char)	50
ADDRESS				VARCHAR2(250 char)	250
COUNTRY_ID			X	NUMBER(19)	19
START_DATE				TIMESTAMP	
END_DATE				TIMESTAMP	
REP_SURNAME				VARCHAR2(50 char)	50
REP_NAME				VARCHAR2(50 char)	50
REP_POSITION				VARCHAR2(50 char)	50
REP_PHONE			X	VARCHAR2(20 char)	20
REP_FAX			X	VARCHAR2(20 char)	20
REP_EMAIL				VARCHAR2(50 char)	50
COMMENTS				VARCHAR2(250 char)	250
AUTH_ECONOMIC_OPERATOR				VARCHAR2(255 char)	255
AUTH_CONSIGNOR_STATUS				VARCHAR2(255 char)	255

2.2.2.85 Table SHT_VESSELS

Code	Primary	Foreign Key	Mandatory	Data Type	Length
------	---------	-------------	-----------	-----------	--------

FILE_ID		X	X	NUMBER(19)	19
CREATED_ON				TIMESTAMP	
UPDATED_ON				TIMESTAMP	
IMO				VARCHAR2(7)	7
MMSI				VARCHAR2(9)	9
CALL_SIGN				VARCHAR2(7)	7
NAME				VARCHAR2(35)	35
VESSEL_ID				NUMBER(19)	19
USER_ID				VARCHAR2(30)	30
EXISTS_FLAG			X	NUMBER(1)	1
UPDATE_FLAG				NUMBER(1)	1
FINALISE_FLAG				NUMBER(1)	1

2.2.2.86 Table SSN_CSV_FILES

Code	Primary	Foreign Key	Mandatory	Data Type	Length
DATABASE_ID	X		X	NUMBER	
FILE_CONTEXTS				BLOB	
USER_ID				VARCHAR2(30)	30
FILENAME				VARCHAR2(255)	255
FILE_TYPE			X	NUMBER(2)	2
PROCESS_FLAG				NUMBER(1)	1
VALID_FLAG				NUMBER(1)	1
PROCESS_STATUS				VARCHAR2(255)	255
FIELD_DELIMITER				VARCHAR2(5)	5
RECORD_DELIMITER				VARCHAR2(5)	5
CREATED_ON				DATE	
PROCESSED_ON				DATE	

2.2.2.87 Table SSN_INTERFACES

Code	Primary	Foreign Key	Mandatory	Data Type	Length
------	---------	-------------	-----------	-----------	--------

DATABASE_ID	X		X	NUMBER(19)	19
PARTY_DATABASE_ID		X		NUMBER(19)	19
PROTOCOL				NUMBER(1)	1
PROTOCOL_DESC				VARCHAR2(50)	50
PROVIDER_URL				VARCHAR2(256 char)	256
REQUESTOR_URL				VARCHAR2(256 char)	256
CERT_NAME				VARCHAR2(100 char)	100

2.2.2.88 Table SSN_LOGS

Code	Primary	Foreign Key	Mandatory	Data Type	Length
DATABASE_ID	X		X	NUMBER(19)	19
MESSAGE_TYPE				VARCHAR2(255 char)	255
SENDER				VARCHAR2(255 char)	255
RECEIVER				VARCHAR2(255 char)	255
MESSAGE_ID				VARCHAR2(255 char)	255
CORRELATION_ID				VARCHAR2(255 char)	255
VESSEL_IMO				VARCHAR2(255 char)	255
VESSEL_MMSI				VARCHAR2(255 char)	255
STATUS_CODE				VARCHAR2(255 char)	255
PROCESS_DETAILS				VARCHAR2(255 char)	255
CREATED_ON				TIMESTAMP	
SENT_AT				TIMESTAMP	
LOG_XML_EXIST				NUMBER(1)	1
TRANSACTION_ID				NUMBER	
NOTIFICATION_ID				NUMBER	
TRANSACTION_STATUS				NUMBER(1)	1
PROTOCOL				NUMBER(1)	1
FUNCTION_CODE				VARCHAR2(255 char)	255

2.2.2.89 Table TASKS

Code	Primary	Foreign Key	Mandatory	Data Type	Length
T_CODE	X		X	VARCHAR2(50 char)	50
T_DESCRIPTION				VARCHAR2(256 char)	256
T_PROTOCOL				NUMBER(1)	1
T_RESTR_APPL_FLG				NUMBER(1)	1
T_RESTR_AREA_TYPE				NUMBER(1)	1
T_TYPE				NUMBER	
DEPENDING_ON				VARCHAR2(50 char)	50
APPLICATION				VARCHAR2(20 char)	20

2.2.2.90 Table TICKET_BANNER

Code	Primary	Foreign Key	Mandatory	Data Type	Length
DATABASE_ID	X		X	NUMBER(19)	19
LNG				VARCHAR2(100)	100
TEXT				VARCHAR2(1000)	1000

2.2.2.91 Table UN_LOCODES

Code	Primary	Foreign Key	Mandatory	Data Type	Length
FILE_ID			X	NUMBER(19)	19
LOCATION_CODE			X	VARCHAR2(5)	5
CREATED_ON				TIMESTAMP	
UPDATED_ON				TIMESTAMP	
LOCATION_NAME				VARCHAR2(50)	50
LOCATION_NAME_NAT				VARCHAR2(50)	50
LOCATION_NAME_WID				VARCHAR2(50)	50
TERMINAL_CODE				VARCHAR2(5)	5
LONGITUDE				NUMBER(10)	10
LATITUDE				NUMBER(10)	10
IS_ENABLED			X	NUMBER(1)	1

IS_EUMEMBER			X	NUMBER(1)	1
IS_UNLOCATION			X	NUMBER(1)	1
COUNTRY_ID				NUMBER(19)	19
COUNTRY				VARCHAR2(10)	10
REMARKS				VARCHAR2(256)	256
SUBDIV				VARCHAR2(18)	18
UNFUNCTION				VARCHAR2(8)	8
STATUS				VARCHAR2(10)	10
UNDATE				VARCHAR2(10)	10
USER_ID				VARCHAR2(30)	30
EXISTS_FLAG			X	NUMBER(1)	1
UPDATE_FLAG				NUMBER(1)	1
FINALISE_FLAG				NUMBER(1)	1
IS_REPEATED				NUMBER(1)	1
IS_ODD				NUMBER(1)	1
IS_DELETED				NUMBER(1)	1
DATABASE_ID	X		X	NUMBER	

2.2.2.92 Table UN_LOCODES_STATS

Code	Primary	Foreign Key	Mandatory	Data Type	Length
DATABASE_ID	X		X	NUMBER	
FILE_ID		X		NUMBER	
CREATED_ON				DATE	
PROCESSED_ON				DATE	
PROCESS_STATUS				NUMBER	
USER_ID				VARCHAR2(30 char)	30
CS_REM_FNX				NUMBER	
CS_REM_RR				NUMBER	
CS_REM_RQ				NUMBER	
CS_REM_LENGTH				NUMBER	
US_FN1_NO_COORD				NUMBER	

US_FN1				NUMBER	
US_FN1_UK_CTR				NUMBER	
US_REP				NUMBER	
US_ODD				NUMBER	
VS_NEW				NUMBER	
VS_UPD				NUMBER	
VS_UPD_ACT				NUMBER	
VS_UPD_DEACT				NUMBER	
VS_UPD_CLASF_SSN				NUMBER	
VS_UPD_CLASF_TEMP				NUMBER	
VS_OTHER				NUMBER	

2.2.2.93 Table UN_LOCODES_STATS_DETAILS

Code	Primary	Foreign Key	Mandatory	Data Type	Length
DATABASE_ID	X		X	NUMBER	
UN_LOCODES_STATS_ID		X		NUMBER	
STATS_TYPE				VARCHAR2(20 char)	20
LOCATION_CODE				VARCHAR2(20 char)	20
LOCATION_NAME				VARCHAR2(255 char)	255
COORDINATES				VARCHAR2(20 char)	20
UNFUNCTION				VARCHAR2(8 char)	8
STATUS				VARCHAR2(10 char)	10
UNDATE				VARCHAR2(10 char)	10
REMARKS				VARCHAR2(256 char)	256

2.2.2.94 Table VESSEL_BB_CONFIG

Code	Primary	Foreign Key	Mandatory	Data Type	Length
BB_VESSEL_ID	X	X	X	NUMBER(19)	19
DATE_FROM				TIMESTAMP	
DATE_TO				TIMESTAMP	

SHIPPING_COMPANY_ID		X		NUMBER(19)	19
---------------------	--	---	--	------------	----

2.2.2.95 Table VESSEL_BB_LIST_STG

Code	Primary	Foreign Key	Mandatory	Data Type	Length
FILE_ID			X	NUMBER(19)	19
CREATED_ON				TIMESTAMP	
UPDATED_ON				TIMESTAMP	
SHIPPING_COMPANY				VARCHAR2(50 char)	50
IMO				VARCHAR2(7 char)	7
MMSI				VARCHAR2(9 char)	9
CALL_SIGN				VARCHAR2(7 char)	7
NAME				VARCHAR2(35 char)	35
TYPE_OF_SHIP				VARCHAR2(35 char)	35
FLAG_STATE				VARCHAR2(50 char)	50
PORTS				VARCHAR2(1000 char)	1000
MON_DATE_FROM				TIMESTAMP	
MON_DATE_TO				TIMESTAMP	
RSS_CERT_SN				VARCHAR2(35 char)	35
RSS_CERT_ISSUER				VARCHAR2(35 char)	35
VESSEL_ID				NUMBER(19)	19
USER_ID				VARCHAR2(30 char)	30
EXISTS_FLAG			X	NUMBER(1)	1
UPDATE_FLAG				NUMBER(1)	1
FINALISE_FLAG				NUMBER(1)	1

2.2.2.96 Table VESSEL_DETAIL_HISTORY

Code	Primary	Foreign Key	Mandatory	Data Type	Length
DATABASE_ID	X		X	NUMBER(19)	19
VESSEL_DATABASE_ID		X		NUMBER(19)	19
VERSION_DATABASE_ID		X		NUMBER(19)	19

VESSEL_ATTRIBUTE				VARCHAR2(36 char)	36
DATE_EFFECT				TIMESTAMP	
REASON_FOR_UPDATE				VARCHAR2(255 char)	255

2.2.2.97 Table VESSEL_DETAIL_VERSIONS

Code	Primary	Foreign Key	Mandatory	Data Type	Length
DATABASE_ID	X		X	NUMBER(19)	19
VESSEL_DATABASE_ID		X	X	NUMBER(19)	19
MMSI				NUMBER(9)	9
CALL_SIGN				VARCHAR2(7 char)	7
SHIP_NAME				VARCHAR2(35 char)	35
REGISTERED_OWNER				VARCHAR2(100 char)	100
REGISTERED_OWNER_ADDRESS				VARCHAR2(255 char)	255
MANAGER				VARCHAR2(100 char)	100
MANAGER_ADDRESS				VARCHAR2(255 char)	255
IS_ACTIVATED				NUMBER(1)	1
IS_VALIDATED				NUMBER(1)	1
MARITIME_ID_DIGITS		X		VARCHAR2(12 char)	12
CREATED_ON			X	TIMESTAMP	
CREATOR_UNIQUE_ID			X	VARCHAR2(60 char)	60
UPDATED_ON				TIMESTAMP	
MODIFIER_UNIQUE_ID				VARCHAR2(60 char)	60
SOURCE				VARCHAR2(10 char)	10
VALIDATED_ON				DATE	

IMO_NUMBER				NUMBER(7)	7
TYPE_OF_SHIP				VARCHAR2(35 char)	35
YEAR_OF_CONSTRUCTION				NUMBER(10)	10
GROSS_TONNAGE				NUMBER(10)	10
LENGTH				NUMBER(10)	10
BEAM				VARCHAR2(100 char)	100
FLAG_REGISTRY				VARCHAR2(2 char)	2
DEADWEIGHT				NUMBER	
SHIPTYPE_AISBASED				VARCHAR2(2 char)	2
SHIPTYPE_PSC				VARCHAR2(3 char)	3
SHIPTYPE_LMIUBASED				VARCHAR2(3 char)	3
KEEL_LAYING_DATE				TIMESTAMP	
SERVICEINDICATOR				VARCHAR2(50 char)	50
IS_BANNED				NUMBER(1)	1
IS_SINGLE_HULL_TANKER				NUMBER(1)	1
IS_DETAINED				NUMBER(1)	1
SHIP_RISK_PROFILE				VARCHAR2(3 char)	3
ELIGIBLE_FOR_BANNING				NUMBER(1)	1
ELIGIBLE_FOR_ESP_INP				NUMBER(1)	1
INSPECTION_PRIORITY				VARCHAR2(2 char)	2
IR_NUMBER				VARCHAR2(12 char)	12
XR_NUMBER				VARCHAR2(14 char)	14
ER_NUMBER				VARCHAR2(12 char)	12

FVP_FLAG				NUMBER(1)	1
SHIPTYPE_UN				VARCHAR2(10 char)	10

2.2.2.98 Table VESSEL_IMAGES

Code	Primary	Foreign Key	Mandatory	Data Type	Length
IMG_ID	X		X	NUMBER(19)	19
VESSEL_DATABASE_ID		X	X	NUMBER(19)	19
IMG_DESC				VARCHAR2(50 char)	50
IMG_BLOB				BLOB	
IMG_TYPE				VARCHAR2(4 char)	4
URI_SOURCE				VARCHAR2(256 char)	256
URI_PROTOCOL				VARCHAR2(10 char)	10
SOURCE				VARCHAR2(10 char)	10
CREATED_ON			X	TIMESTAMP	

2.2.2.99 Table VESSEL_RSS

Code	Primary	Foreign Key	Mandatory	Data Type	Length
RSS_ID	X		X	NUMBER(19)	19
SHIPPING_COMPANY_ID		X	X	NUMBER(19)	19
RSS_VESSEL_ID		X	X	NUMBER(19)	19
CERT_SN				VARCHAR2(35 char)	35
CERT_ISSUER				VARCHAR2(35 char)	35
DATE_FROM				TIMESTAMP	
DATE_TO				TIMESTAMP	

2.2.2.100 Table VESSEL_RSS_LOCODES

Code	Primary	Foreign Key	Mandatory	Data Type	Length
RSS_ID	X	X	X	NUMBER(19)	19
LOCATION_ID	X	X	X	NUMBER(19)	19

2.2.2.101 Table VESSEL_TEMP_DIVERGENCE

Code	Primary	Foreign Key	Mandatory	Data Type	Length
DATABASE_ID	X		X	NUMBER(19)	19
SOURCE	X		X	VARCHAR2(20 char)	20
DIV_MMSI				NUMBER(9)	9
DIV_CALLSIGN				VARCHAR2(7 char)	7
DIV_SHIPNAME				VARCHAR2(35 char)	35
DIV_IMO				NUMBER(7)	7

2.2.2.102 Table VESSELS

Code	Primary	Foreign Key	Mandatory	Data Type	Length
DATABASE_ID	X		X	NUMBER(19)	19
IMO_NUMBER				NUMBER(7)	7
MMSI				NUMBER(9)	9
CALL_SIGN				VARCHAR2(7 char)	7
SHIP_NAME				VARCHAR2(35 char)	35
IS_BANNED				NUMBER(1)	1
IS_SINGLE_HULL_TANKER				NUMBER(1)	1
HAS_NOTIFICATION				NUMBER(1)	1
IS_VALIDATED				NUMBER(1)	1
IS_ACTIVATED				NUMBER(1)	1
DATABASE_CREATED_ON			X	TIMESTAMP	
DATABASE_LAST_UPDATED_ON				TIMESTAMP	
FLAG_REGISTRY				VARCHAR2(2 char)	2
IS_DETAINED				NUMBER(1)	1
IR_NUMBER				VARCHAR2(12 char)	12
XR_NUMBER				VARCHAR2(14	14

				char)	
ER_NUMBER				VARCHAR2(12 char)	12
FVP_FLAG				NUMBER(1)	1
AR_SIGN				NUMBER(10)	10
AR_POS				VARCHAR2(5)	5

2.2.2.103 Table VOYAGE_CREW_PASSENGERS

Code	Primary	Foreign Key	Mandatory	Data Type	Length
DATABASE_ID	X	X	X	NUMBER(19)	19
PROVIDER_ID				NUMBER(19)	19
SHIPCALLID				VARCHAR2(36)	36
NUMBER_OF_CREW				NUMBER(10)	10
NUMBER_OF_PASSENGERS				NUMBER(10)	10
STOWAWAYS				NUMBER(1)	1
DEPARTURE				NUMBER(1)	1
CREATED_ON				TIMESTAMP(6)	6
UPDATED_ON				TIMESTAMP(6)	6
NOTIFICATION_ID				NUMBER(19)	19

2.2.2.104 Table VOYAGE_HAZMAT

Code	Primary	Foreign Key	Mandatory	Data Type	Length
DATABASE_ID	X	X	X	NUMBER(19)	19
HAZMAT_PROVIDER_ID				NUMBER(19)	19
HAZMAT_SHIPCALLID				VARCHAR2(36)	36
INF_SHIP_CLASS				VARCHAR2(4 chars)	4
DG_DATABASE_ID		X		NUMBER(19)	19
HAZMAT_ID				NUMBER(19)	19
HAZMAT_MESSAGE_TYPE				VARCHAR2(2 chars)	2
DEPARTURE		X		NUMBER(1)	1
DG_CLASSIFICATION		X		VARCHAR2(20 char)	20

CREATED_ON				TIMESTAMP(6)	6
UPDATED_ON				TIMESTAMP(6)	6

2.2.2.105 Table VOYAGE_NOTIFICATIONS

Code	Primary	Foreign Key	Mandatory	Data Type	Length
VOYAGE_ID	X	X	X	NUMBER(19)	19
NOTIFICATION_ID	X	X	X	NUMBER(19)	19

2.2.2.106 Table VOYAGE_SECURITY

Code	Primary	Foreign Key	Mandatory	Data Type	Length
DATABASE_ID	X	X	X	NUMBER(19)	19
PROVIDER_ID				NUMBER(19)	19
SHIPCALLID				VARCHAR2(36)	36
CURRENT_SHIP_SECURITY_LEVEL				VARCHAR2(20 chars)	20
AGENCY_NAME				VARCHAR2(256 chars)	256
BUSINESS_PHONE				VARCHAR2(20 chars)	20
CONTACT_FAX				VARCHAR2(20 chars)	20
CONTACT_EMAIL				VARCHAR2(256 chars)	256
CREATED_ON				TIMESTAMP(6)	6
UPDATED_ON				TIMESTAMP(6)	6
NOTIFICATION_ID				NUMBER(19)	19

2.2.2.107 Table VOYAGE_SHIP_ITENERARY

Code	Primary	Foreign Key	Mandatory	Data Type	Length
DATABASE_ID		X		NUMBER(19)	19

DEPARTURE				NUMBER(1)	1
PORT_OF_CALL				VARCHAR2(5 Char)	5
DATE_OF_ARRIVAL				DATE	

2.2.2.108 Table VOYAGE_WASTE

Code	Primary	Foreign Key	Mandatory	Data Type	Length
DATABASE_ID	X	X	X	NUMBER(19)	19
PROVIDER_ID				NUMBER(19)	19
SHIPCALLID				VARCHAR2(36)	36
LAST_PORT_DELIVERED				VARCHAR2(5)	5
LAST_PORT_DELIVERED_DATE				TIMESTAMP	
WASTE_DELIVERY_STATUS				VARCHAR2(50 chars)	50
CREATED_ON				TIMESTAMP(6)	6
UPDATED_ON				TIMESTAMP(6)	6
NOTIFICATION_ID				NUMBER(19)	19

2.2.2.109 Table VOYAGES

Code	Primary	Foreign Key	Mandatory	Data Type	Length
DATABASE_ID	X		X	NUMBER(19)	19
VESSEL_DATABASE_ID		X	X	NUMBER(19)	19
LASTPORT				VARCHAR2(5 char)	5
PORTOFCALL				VARCHAR2(5 char)	5
ETA_TO_PORTOFCALL				TIMESTAMP	
ETD_FROM_PORTOFCALL				TIMESTAMP	
NEXTPORT				VARCHAR2(5 char)	5
ATA_TO_PORTOFCALL				TIMESTAMP	
ATD_FROM_PORTOFCALL				TIMESTAMP	

ETA_TO_NEXTPORT				TIMESTAMP	
ETD_FROM_LASTPORT				TIMESTAMP	
POSITION_IN_PORTOFCALL				VARCHAR2(15 char)	15
POSSIBLE_ANCHORAGE				VARCHAR2(1 char)	1
PLANNED_OPERATIONS				VARCHAR2(256 char)	256
PLANNED_WORKS				VARCHAR2(256 char)	256
SHIP_CONFIGURATION				VARCHAR2(10 char)	10
CARGO_VOLUME_NATURE				VARCHAR2(256 char)	256
CONDITION_CARGO_BALLAST_TANKS				VARCHAR2(256 char)	256
ANCHORAGE				VARCHAR2(1 char)	1
SHIPCALLID				VARCHAR2(36 char)	36
CREATED_ON				TIMESTAMP	
UPDATED_ON				TIMESTAMP	
STATUS				NUMBER(1)	1
HAZMATONBOARD				VARCHAR2(1 char)	1
POB_VOYAGE_TOWARDS_PORTOFCALL				NUMBER(5)	5
SENDER_ID		X		NUMBER(19)	19
DETECTED				NUMBER(1)	1
VOYAGE_ID				VARCHAR2(50 char)	50
BRIEF_CARGO_DESC				VARCHAR2(256 char)	256
POB_VOYAGE_TOWARDS_NEXT_PORT				NUMBER(5)	5
PROVIDER_LAST_UPDATE				VARCHAR2(15)	15

)	
CALL_PURPOSE_DATABASE_ID				NUMBER(19)	19
SHIP_PARTICULARS_DATABASE_ID				NUMBER(19)	19

2.2.3 References

The referential integrity constraints that are based on the relationships among master and detail tables or the relationships between tables and reference data tables (e.g. Location codes) are listed hereunder.

Code	Parent Table	Child Table	Foreign Key Columns	Cardinality
AD_RECIPIENT_FK	PARTIES	ALERT_DISTRIBUTION_RECIPIENTS	RECIPIENT_ID	0..*
ALERT_ASS_IR_FK	ALERT_NOTIFICATIONS	ALERT_ASSOCIATED_IR	ALERT_DATABASE_ID	0..*
ALERT_BANNED_SHIP_FK	INFORMATION_SOURCES	ALERT_BANNED_SHIP	DATABASE_ID	0..*
ALERT_DISTR_FILE_ID_FK	INFORMATION_SOURCES	ALERT_DISTRIBUTION_FILE	DATABASE_ID	0..*
ALERT_DISTR_LFC_ID_FK	INFORMATION_SOURCES	ALERT_DISTRIBUTION_LOSTFOUND	DATABASE_ID	0..*
ALERT_DISTR_OTHERS_ID_FK	INFORMATION_SOURCES	ALERT_DISTRIBUTION_OTHERS	DATABASE_ID	0..*
ALERT_DISTR_POLREP_ID_FK	INFORMATION_SOURCES	ALERT_DISTRIBUTION_POLREP	DATABASE_ID	0..*
ALERT_DISTR_SITREP_ID_FK	INFORMATION_SOURCES	ALERT_DISTRIBUTION_SITREP	DATABASE_ID	0..*
ALERT_DISTR_WASTE_ID_FK	INFORMATION_SOURCES	ALERT_DISTRIBUTION_WASTE	DATABASE_ID	0..*
ALERT_DISTRIBUTION_FAILED_FK	INFORMATION_SOURCES	ALERT_DISTRIBUTION_FAILED	DATABASE_ID	0..*
ALERT_FEEDBACK_ID_FK	ALERT_NOTIFICATIONS	ALERT_FEEDBACK	ALERT_NOTIFICATION_ID	0..*

ALERT_INSURANCE_FAILURE_FK	INFORMATION_SOURCES	ALERT_INSURANCE_FAILURE	DATABASE_ID	0..*
ALERT_NOTIF_DBID_FK	NOTIFICATIONS	ALERT_NOTIFICATIONS	DATABASE_ID	0..*
ALERT_NOTIF_PORT_FK	LOCATIONS	ALERT_NOTIFICATIONS		0..*
ALERT_NOTIF_VESSEL_DBID_FK	NOTIFICATIONS	ALERT_NOTIFICATION_VESSELS	DATABASE_ID	0..*
ALERT_NOTIF_VESSEL_ALERT_FK	ALERT_NOTIFICATIONS	ALERT_NOTIFICATION_VESSELS	ALERT_DATABASE_ID	0..*
ALERT_NOTIFICATION_FK	ALERT_NOTIFICATIONS	INCIDENT_NOTIFICATIONS	ALERT_DATABASE_ID	0..*
ALERT_PILOT_OR_PORT_REPORT_FK	INFORMATION_SOURCES	ALERT_PILOT_OR_PORT_REPORT	DATABASE_ID	0..*
ALERT_VESSEL_NOTIFICATION_FK	ALERT_NOTIFICATION_VESSELS	INCIDENT_NOTIFICATIONS	ALERT_VESSEL_NOTIFICATION_ID	0..*
ALERT_VTS_RULES_FK	INFORMATION_SOURCES	ALERT_VTS_RULES_INFRINGEMENT	DATABASE_ID	0..*
CONS_NOT_MR_N_FK	CONSIGNMENT_NOTIFICATIONS	CONSIGNMENT_NOTIFICATION_MR_N	CN_DATABASE_ID	0..*
CONS_NOT_TDN_FK	CONSIGNMENT_NOTIFICATIONS	CONSIGNMENT_NOTIFICATION_TDN	CN_DATABASE_ID	0..*
CONS_NOT_UCR_FK	CONSIGNMENT_NOTIFICATIONS	CONSIGNMENT_NOTIFICATION_UCR	CN_DATABASE_ID	0..*
CONS_NOTIFICATIONS_VESSEL_FK	VESSELS	CONSIGNMENT_NOTIFICATIONS	REGISTERED_VESSEL_ID	0..*
CONS_NOTIFICATIONS_VOYAGE_FK	VOYAGES	CONSIGNMENT_NOTIFICATIONS	VOYAGE_DATABASE_ID	0..*
COUNTRIES_VP_AREAS_AREA_FK	AREAS	COUNTRIES_VP_AREAS	AREA_ID	0..*
COUNTRIES_VP_AREAS_CTR_FK	COUNTRIES	COUNTRIES_VP_AREAS	COUNTRY_ID	0..*

CTR_PER_AREA_AREA_FK	AREAS	COUNTRIES_PER_AREA	AREA_ID	0..*
CTR_PER_AREA_CTR_FK	COUNTRIES	COUNTRIES_PER_AREA	COUNTRY_ID	0..*
EMAIL_SAT_CONFIG_FK	SAT_SERVICES_CONFIG	SAT_SERVICE_EMAILS	SAT_SERVICE_ID	0..*
EXEMPTIONS_CLOC_FK	LOCATIONS	EXEMPTIONS	CONTACT_LOCATION_ID	0..*
EXEMPTIONS_COUNTRY_FK	COUNTRIES	EXEMPTIONS	GRANTING_COUNTRY_ID	0..*
EXEMPTIONS_CREATOR_FK	PARTIES	EXEMPTIONS	CREATOR_ID	0..*
EXEMPTIONS_EXEM_FK	EXEMPTIONS	EXEMPTIONS_LOCODES	EXEMPTION_ID	0..*
EXEMPTIONS_LOC_FK	LOCATIONS	EXEMPTIONS_LOCODES	LOCATION_ID	0..*
EXEMPTIONS_MODIFIER_FK	PARTIES	EXEMPTIONS	MODIFIER_ID	0..*
EXEMPTIONS_PARTY_FK	PARTIES	EXEMPTIONS	GRANTING_AUTHORITY_ID	0..*
EXEMPTIONS_VESSEL_FK	VESSELS	EXEMPTIONS	VESSEL_ID	0..*
FEEDBACK_FK	ALERT_FEEDBACK	INCIDENT_NOTIFICATIONS	FEEDBACK_DATABASE_ID	0..*
FEEDBACK_SOURCES_LOCATION_CODE_FK	LOCATIONS	ALERT_FEEDBACK		0..*
GROUP_ROLES_GROUP_FK	GROUPS	GROUP_ROLES	G_NAME	0..*
GROUP_ROLES_ROLE_FK	ROLES	GROUP_ROLES	RL_CODE	0..*
INCIDENT_NOTIFICATIONS_FK	NOTIFICATIONS	INCIDENT_NOTIFICATIONS	NOTIFICATION_DATABASE_ID	0..*
INFO_SOURCES_LOCATION_FK	LOCATIONS	INFORMATION_SOURCES		0..*
INFO_SOURCES_NOTIFICATION_FK	NOTIFICATIONS	INFORMATION_SOURCES	NOTIFICATION_ID	0..*
LOC_CTR_FK	COUNTRIES	LOCATIONS	COUNTRY_ID	0..*
LOCATION_IMAGES_FK	LOCATIONS	LOCATION_IMAGES	LOCATION_DATA_BASE_ID	0..*

LOCATIONS_NAMES_FK	LOCATIONS	LOCATIONS_NAMES	LOCATION_ID	0..*
MAM_ALERT_EMAILS_FK	MAM_CONFIG	MAM_ALERT_EMAILS	MAM_CONFIG_ID	0..*
MRS_NOTIF_PORT_FK	LOCATIONS	MRS_NOTIFICATIONS		0..*
NOTIF_REG_VESSEL_FK	VESSELS	NOTIFICATIONS	REGISTERED_VESSEL_ID	0..*
NOTIF_SENDER_FK	PARTIES	NOTIFICATIONS	SENDER_ID	0..*
PARTIES_ASSOC_AREAS_AREA_FK	AREAS	PARTIES_ASSOC_AREAS	AREAS_ID	0..*
PARTIES_ASSOC_AREAS_PARTY_FK	PARTIES	PARTIES_ASSOC_AREAS	PARTIES_ID	0..*
PARTIES_ASSOC_LOCODES_FK	PARTIES	PARTIES_ASSOC_LOCODES	PARTIES_ID	0..*
PARTIES_ASSOC_LOCODES_LOC_FK	LOCATIONS	PARTIES_ASSOC_LOCODES	LOCATIONS_ID	0..*
PARTIES_FK	PARTIES	SSN_INTERFACES	PARTY_DATABASE_ID	0..*
PARTIES_GRO_FK	GROUPS	PARTIES	GROUP_NAME	0..*
PARTIES_INTERFACES_FK	PARTIES	PARTIES_INTERFACES	PARTY_DATABASE_ID	0..*
PARTIES_PAR_FK	PARTIES	PARTIES	PARENT_ID	0..*
PARTIES_PROXIES_FK	PROXIES	PARTIES	PROXY_ID	0..*
PARTIES_ROLES_PAR_FK	PARTIES	PARTIES_ROLES	PARTY_DATABASE_ID	0..*
PARTIES_ROLES_ROLE_FK	ROLES	PARTIES_ROLES	RL_CODE	0..*
PARTY_LOC_FK	LOCATIONS	PARTIES	LOCATION_ID	0..*
PARTY_MAM_CONFIG_FK	PARTIES	MAM_CONFIG	USER_DATABASE_ID	0..*
PARTY_PERM_FK	PARTIES	PERMISSIONS	PARTY_DATABASE_ID	0..*
PARTY_SAT_SERVICES_CONFIG_FK	PARTIES	SAT_SERVICES_CONFIG	USER_DATABASE_ID	0..*
PERMISSIONS_ASSOC_AREAS_FK	PERMISSIONS	PERMISSIONS_ASSOC_AREAS	PERMISSIONS_ID	0..*

PERMISSIONS_ASSOC_LOCODES_FK	PERMISSIONS	PERMISSIONS_ASSOC_LOCODES	PERMISSIONS_ID	0..*
PERMISSIONS_TASKS_FK	TASKS	PERMISSIONS	T_CODE	0..*
PORTPLUS_DG_FK	PORTPLUS_NOTIFICATIONS	PORTPLUS_NOTIFICATIONS_DG	DATABASE_ID	0..*
PORTPLUS_HAZMAT_DG_FK	PORTPLUS_NOTIFICATIONS_HAZMAT	PORTPLUS_NOTIFICATIONS_DG	DATABASE_ID; DEPARTURE	0..*
PORTPLUS_HAZMAT_FK	PORTPLUS_NOTIFICATIONS	PORTPLUS_NOTIFICATIONS_HAZMAT	DATABASE_ID	0..*
PORTPLUS_MSGID_FK	PORTPLUS_NOTIFICATIONS	PORTPLUS_NOTIFICATIONS_MSGID	DATABASE_ID	0..*
PROXIES_AREAS_PROXY_FK	PROXIES	PROXIES_SOURCES	PROXY_ID	0..*
Reference_109	PORTPLUS_NOTIFICATIONS	NOTIFICATIONS	DATABASE_ID	0..*
Reference_110	AIS_NOTIFICATIONS	NOTIFICATIONS	DATABASE_ID	0..*
Reference_111	MRS_NOTIFICATIONS	NOTIFICATIONS	DATABASE_ID	0..*
ROLES_TASKS_ROL_FK	ROLES	ROLES_TASKS	RL_CODE	0..*
ROLES_TASKS_TAS_FK	TASKS	ROLES_TASKS	T_CODE	0..*
SAT_VESSEL_ID_FK	VESSELS	SAT_VESSELS	VESSEL_ID	0..*
SAT_VESSELS_SERVICE_CONFIG_FK	SAT_VESSELS	SAT_SERVICES_CONFIG	SAT_VESSELS_ID	0..*
SET_RP_LOCODES_LOCID_FK	LOCATIONS	SET_RP_LOCODES	LOCODE_DATABASE_ID	0..*
SET_RP_LOCODES_SETID_FK	SET_ROUTPOINTS	SET_RP_LOCODES	SET_DATABASE_ID	0..*
SHIP_PARTICULARS_REG_VESSEL_FK	VESSELS	SHIP_PARTICULARS	REGISTERED_VESSEL_ID	0..*
SHIP_PARTICULARS_SENDER_FK	PARTIES	SHIP_PARTICULARS	SENDER_ID	0..*
SHT_VESSELS_FILE_FK	SSN_CSV_FILES	SHT_VESSELS	FILE_ID	0..*
SHT_VESSELS_USER_FK	PARTIES	SHT_VESSELS		0..*

SSN_USER_ID_FK	PARTIES	ALERT_NOTIFICATIONS		0..*
UN_LOC_STATS_DET_D BID_FK	UN_LOCODES_ST ATS	UN_LOCODES_ST ATS_DETAILS	UN_LOCODES_S TATS_ID	0..*
UN_LOC_STATS_FILEID _FK	SSN_CSV_FILES	UN_LOCODES_ST ATS	FILE_ID	0..*
VESSEL_BB_CONFIG_FK	VESSELS	VESSEL_BB_CONF IG	BB_VESSEL_ID	0..*
VESSEL_BB_SC_FK	SHIPPING_COMPANIES	VESSEL_BB_CONF IG	SHIPPING_COMP ANY_ID	0..*
VESSEL_DET_FK	VESSELS	VESSEL_DETAIL_ VERSIONS	VESSEL_DATABA SE_ID	0..*
VESSEL_DET_MARITIME _ID_FK	MARITIME_ID_DI GITS	VESSEL_DETAIL_ VERSIONS	MARITIME_ID_D IGITS	0..*
VESSEL_DETAIL_VERSI ONS_CUI_FK	PARTIES	VESSEL_DETAIL_ VERSIONS		0..*
VESSEL_DETAIL_VERSI ONS_MUI_FK	PARTIES	VESSEL_DETAIL_ VERSIONS		0..*
VESSEL_DETHIST_VERS IONID_FK	VESSEL_DETAIL_ VERSIONS	VESSEL_DETAIL_ HISTORY	VERSION_DATA BASE_ID	0..*
VESSEL_DETHIST_VESS ELID_FK	VESSELS	VESSEL_DETAIL_ HISTORY	VESSEL_DATABA SE_ID	0..*
VESSEL_IMAGES_FK	VESSELS	VESSEL_IMAGES	VESSEL_DATABA SE_ID	0..*
VESSEL_RSS_LOCODES _ID_FK	VESSEL_RSS	VESSEL_RSS_LOC ODES	RSS_ID	0..*
VESSEL_RSS_LOCODES _LOC_FK	LOCATIONS	VESSEL_RSS_LOC ODES	LOCATION_ID	0..*
VESSEL_RSS_SC_FK	SHIPPING_COMPANIES	VESSEL_RSS	SHIPPING_COMP ANY_ID	0..*
VESSEL_RSS_VESSEL_F K	VESSELS	VESSEL_RSS	RSS_VESSEL_ID	0..*
VOY_NOTIFICATIONS_N OT_FK	NOTIFICATIONS	VOYAGE_NOTIFIC ATIONS	NOTIFICATION_I D	0..*
VOY_NOTIFICATIONS_V OY_FK	VOYAGES	VOYAGE_NOTIFIC ATIONS	VOYAGE_ID	0..*
VOYAGES_HAZMAT_NOT _FK	NOTIFICATIONS	VOYAGES	HAZMAT_ID	0..*

VOYAGES_HAZMAT_SEN DER_FK	PARTIES	VOYAGES	HAZMAT_PROVI DER_ID	0..*
VOYAGES_PORTOFCALL _FK	LOCATIONS	VOYAGES		0..*
VOYAGES_SENDER_FK	PARTIES	VOYAGES	SENDER_ID	0..*
VOYAGES_VESSEL_FK	VESSELS	VOYAGES	VESSEL_DATABA SE_ID	0..*

Table 2-4 SSN EIS List of References

2.2.4 Views

The SSN-EIS views are depicted in the following diagram.

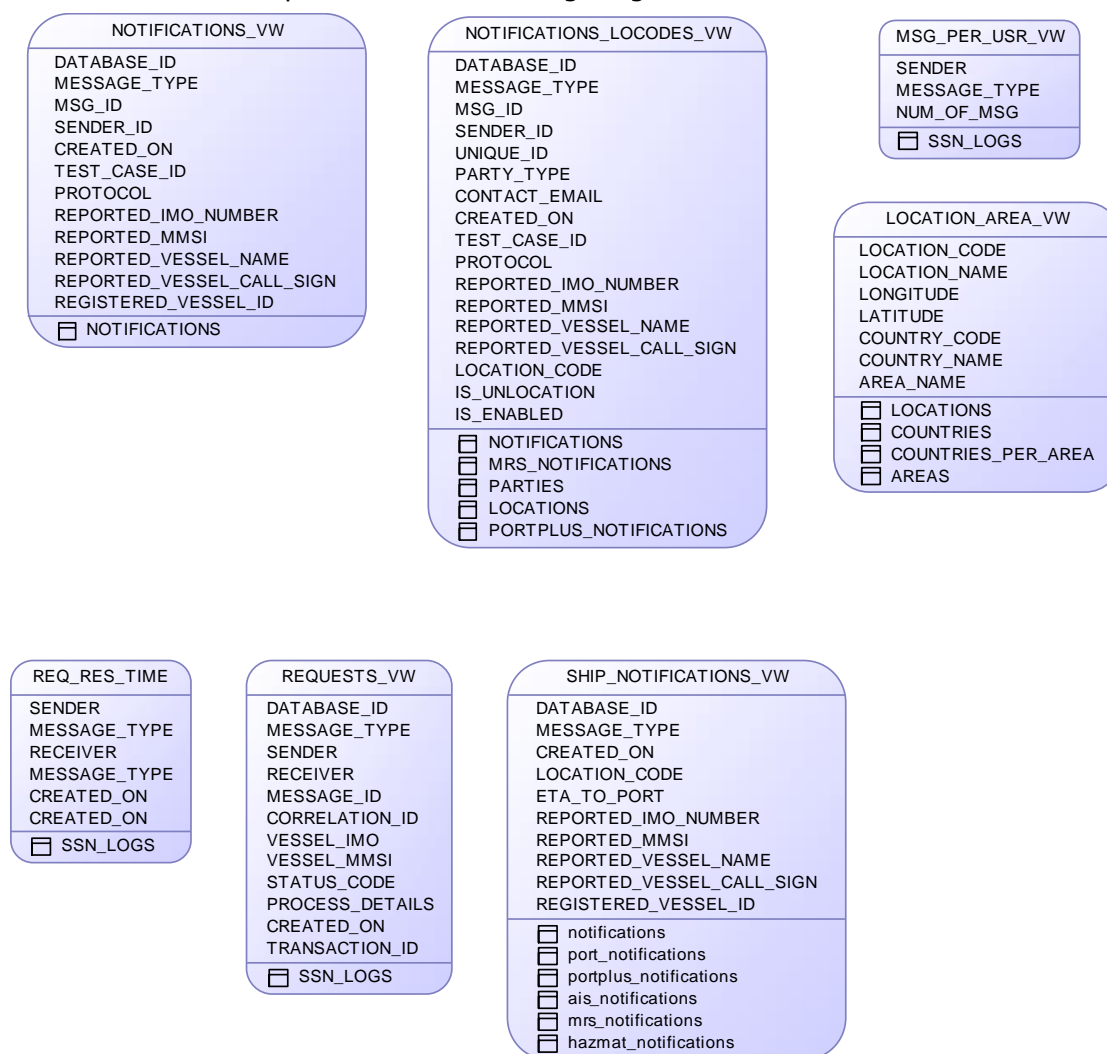




Figure 2-7 SSN-EIS Views

The list of views is presented hereunder.

View	Description
LOCATION_AREA_VW	Provide the complete list of LOCATIONS per COUNTRY per AREA.
NOTIFICATIONS_LOCODES_VW	Provides the NOTIFICATIONS of type PortPlus, Port, Ship and Hazmat send by PARTIES in a de-normalised format. Used by the Temporary Locations per Notification report
NOTIFICATIONS_VW	Provides the NOTIFICATIONS of all MESSAGE_TYPES. User by the Notification Analysis reports.
MSW_PER_USR_VW	Provides the aggregated number of messages sent per PARTY per MESSAGE_TYPE
REQ_RES_TIME	For every request-response this view provides the timestamp when the MS2SSN request was received and the timestamp when the SSN2MS response was sent. User to report the average time between request and response messages.
REQUESTS_VW	Provides the requests for details sent by the data requestors for all MESSAGE_TYPES by PARTIES and search VESSELS. User by the Request Analysis reports.
SHIP_NOTIFICATIONS_VW	Provides the ship calls (ETA/ATA reporting notifications) per VESSEL. Used by the Find Information > List of ship calls.
VOYAGE_ARRIVAL_VW	Provides the voyages (ship calls) reporting the arrival of a ship to the PortOfCall. More specifically, it provides the consolidated view concerning the pre-arrival and arrival details for the "inbound" ship Call (this set utilises as sole input the PortPlus notifications provided by the port receiving the ship). This consolidated view includes Hazmat and Crew&Passengers notification information concerning the arrival of a ship to a port only if this information was reported to SSN by the port receiving the ship. Furthermore it shall include the security and waste information notified concerning the arrival. Note: The protocol to be utilised (SOAP or XML) for retrieving the Hazmat, Security, Waste and/or Crew&Passengers details can be found based on the HAZMAT_ID or SECURITY_ID or WASTE_ID or CREW_PASSENGERS_ID respectively. The "_ID" refers to the INFORMATION_SOURCE NOTIFICATION_ID of the data provider.

View	Description
VOYAGE_DEPARTURE_VW	<p>Provides the voyages (ship calls) reporting the departure of a ship to the PortOfCall towards the NextPort.</p> <p>More specifically, it provides the consolidated view of departure details concerning a ship call. This data set will include, if made available, the Hazmat and Crew&Passengers notification information provided by the port that the vessel is departing (concerning the outbound voyage from the port the vessel is departing).</p> <p>Note: The protocol to be utilised (SOAP or XML) for retrieving the Hazmat and/or Crew&Passengers details can be found based on the HAZMAT_ID or CREW_PASSENGERS_ID respectively. The "_ID" refers to the INFORMATION_SOURCE NOTIFICATION_ID of the data provider.</p>

Table 2-5: SSN-EIS List of Views

2.2.5 Synonyms

External data sources are referenced via the SYNONYMS defined hereunder.

Synonym	Comments
<i>Used as input to the PARTIES PERSONS management that define the users with access to the EIS and STIRES web consoles are REF_ADMIN tables referring to SSN users and the groups they belong.</i>	
SSN_USERS	<p><i>Synonym Type: Private synonym</i> <i>Synonym Owner: EIS_ADMIN</i> <i>Object Name: SSN_USERS</i> <i>Object Owner: REF_ADMIN</i> <i>Object Type: Table</i></p>
SSN_GROUPS	<p><i>Synonym Type: Private synonym</i> <i>Synonym Owner: EIS_ADMIN</i> <i>Object Name: SSN_GROUPS</i> <i>Object Owner: REF_ADMIN</i> <i>Object Type: Table</i></p>
SSN_GROUPMEMBERS	<p><i>Synonym Type: Private synonym</i> <i>Synonym Owner: EIS_ADMIN</i> <i>Object Name: SSN_GROUPMEMBERS</i> <i>Object Owner: REF_ADMIN</i> <i>Object Type: Table</i></p>
The "MarInfo" database tables/views used as input to the semi-automatic OVR update.	
MARINFO_LOTA_MAX	<p><i>Synonym Type: Private synonym</i> <i>Synonym Owner: EIS_ADMIN</i> <i>Object Name: LOTA_MAX</i> <i>Object Owner: MARINFO</i> <i>Object Type: Table</i></p>
MARINFO_LOTA_MIN	<p><i>Synonym Type: Private synonym</i> <i>Synonym Owner: EIS_ADMIN</i></p>

Synonym	Comments
	Object Name: LOTA_MIN Object Owner: MARINFO Object Type: Table
MARINFO_LOTB_MAX	Synonym Type: Private synonym Synonym Owner: EIS_ADMIN Object Name: LOTB_MAX Object Owner: MARINFO Object Type: Table
MARINFO_LOTB_MIN	Synonym Type: Private synonym Synonym Owner: EIS_ADMIN Object Name: LOTB_MIN Object Owner: MARINFO Object Type: Table
The REF_ADMIN database tables/views used as input to the automatic OVR update. The synonyms defined for the RLR objects are for future reerence.	
REF_RVR_VESSELS	Synonym Type: Private synonym Synonym Owner: EIS_ADMIN Object Name: REF_RVR_VESSELS Object Owner: REF_ADMIN Object Type: Table
REF_RVR_VESSEL_FLAG_VERSIONS	Synonym Type: Private synonym Synonym Owner: EIS_ADMIN Object Name: REF_RVR_VESSEL_FLAG_VERSIONS Object Owner: REF_ADMIN Object Type: Table
REF_RVR_VESSEL_DETAILS_HISTORY	Synonym Type: Private synonym Synonym Owner: EIS_ADMIN Object Name: REF_RVR_VESSEL_DETAILS_HISTORY Object Owner: REF_ADMIN Object Type: Table
REF_RVR_VES_OWNER	Synonym Type: Private synonym Synonym Owner: EIS_ADMIN Object Name: REF_RVR_VES_OWNER Object Owner: REF_ADMIN Object Type: Table
REF_RLR_LOCATIONS	Synonym Type: Private synonym Synonym Owner: EIS_ADMIN Object Name: REF_RLR_LOCATIONS Object Owner: REF_ADMIN Object Type: Table
REF_RLR_SUBSIDIARY_CODES	Synonym Type: Private synonym Synonym Owner: EIS_ADMIN Object Name: REF_RLR_SUBSIDIARY_CODES Object Owner: REF_ADMIN Object Type: Table
REF_RLR_COUNTRIES	Synonym Type: Private synonym Synonym Owner: EIS_ADMIN

Synonym	Comments
	<i>Object Name:</i> REF_RLR_COUNTRIES <i>Object Owner:</i> REF_ADMIN <i>Object Type:</i> Table
REF_RLR_ALTRN_NAMES	<i>Synonym Type:</i> Private synonym <i>Synonym Owner:</i> EIS_ADMIN <i>Object Name:</i> REF_RLR_ALTRN_NAMES <i>Object Owner:</i> REF_ADMIN <i>Object Type:</i> Table
REF_RLR_IMAGES	<i>Synonym Type:</i> Private synonym <i>Synonym Owner:</i> EIS_ADMIN <i>Object Name:</i> REF_RLR_IMAGES <i>Object Owner:</i> REF_ADMIN <i>Object Type:</i> Table

Table 2-6: List of Synonyms

2.2.6 Packages

The list of packages is presented hereunder.

Package	Description
SSN_CSV_FILES_PKG	Provides the functionality necessary for the SSN CSV uploaded files.
SSN_EIS_STIRES_PKG	Provides STIRES with enrichment data, that is notification and vessel specific data upon request.
SSN_LOCODE_PKG	Provides the functionality necessary for the UN location codes loading.
SSN_NOTIFICATION_MNG_PKG	Performs notification management: <ul style="list-style-type: none"> • Get the details of the latest relative Ship Notifications. • Voyage consolidation procedure based on the reported PortPlus notifications. The consolidation takes as input the PortPlus notifications and its contents including the hazmat, Waste, Security and Crew & Passengers information reported. The data are consolidated with previously reported PortPlus notifications based on the ShipCallId. A voyage is created for the arrival to the PortOfCall and a voyage in case of departure/for the voyage towards NextPort. The Hazmat, Security, Waste and Crew & Passengers information are correlated with the arrival (towards PortOfCall) or the departure (towards NextPort) voyages. • Set the active Hazmat reported in a PortPlus notification. • Set the status of voyages to closed based on the ETA and ATA criteria.

Package	Description
	<ul style="list-style-type: none"> Get details relevant to ShipCalls for a given vessel of vessels by registered flag. The information expected depend on the <i>GetDetails</i> parameter of the corresponding <i>MS2SSN_ShipCall_Req</i> message defined in the <i>MS2SSN_ShipCall_Req</i> message. Possible choices <ul style="list-style-type: none"> 1 = <i>ExpectedCallOfSelectedShip</i> 2 = <i>MostRecentArrivalOfSelectedShip</i> 3 = <i>MostRecentDepartureOfSelectedShip</i> 4 = <i>RecentAndCurrentShipCallsOfSelectedShip</i> 5 = <i>ExpectedShipCallsAtEUPort</i> 6 = <i>CurrentShipCallsAtEUPort</i> 7 = <i>CompletedShipCallsAtEUPort</i> 10 = <i>LatestCallUpdates</i> 13 = <i>GetActiveHazmatForSelectedShip</i> 20 = <i>ListExpectedCallsOfSelectedShip</i> 21 = <i>SelectedShipCall</i> 22 = <i>GetActiveSecurityForSelectedShip</i> 23 = <i>GetActiveWasteForSelectedShip</i> 24 = <i>GetActiveCrew&PaxForSelectedShip</i> 114 = <i>RelevantNotifications</i> to become (replaces 14) GIDD-v0.90 Improvement of relevant notifications 115 = <i>RelevantNotifications(Voyages)</i> detected by STIRES (detected=1) 116 = <i>SearchByShipCallId MS Voyage</i> that corresponds to voyage detected by STIRES <p>NOTE: 1, 2, 3, 13, 20, 21, 22, 23, 24 will return 1 relevant ShipCall and the corresponding Hazmat/Security/Waste/Crew&Pax information (summary or details).</p>
SSN_OVR_SYNC_PKG	<p>Perform vessel management:</p> <ul style="list-style-type: none"> Update the Operational Vessel repository based on the newly updated RVR data. Automatically compare the new vessel records created in EIS OVR during the last day against the vessel records stored at the MarInfo DB. Differences will be stored in a stage area, an operator via the Management Console will

Package	Description
	verify and accept differences.
SSN_PARTIES_PERM_CHK_PKG	Validate PARTY permissions according to the GROUP, ROLE and TASK granted per notification type and relative data (i.e. <i>NextPortOfCall</i> value reported in a notification message.
SSN_PATH_PREDICT_PKG	For a given starting and ending LOCODEs return the INCIDENT_REP_RECIPIENT PARTIES along the predicted rout plan of a given vessel.
SSN_PROXY_MNG_PKG	Provides for the retrieval of proxies specific data, areas covered by proxies and associated parties.
SSN_UTILS_PKG	To provide useful functions: <ul style="list-style-type: none"> • Create/Submit a job • Schedule a job when to run • check and purge the size of TLOG table • Synchronize the LOG_XML_CONTENTS CTX INDEX • Create a record on SSN_LOGS table
SSN_USER_MNG_PKG	On new user creation, add a MAM_CONFIG record for a new Organization. Send Email to the MSS operator of the new user creation. Insert/update/delete user data at STIRES_ADMIN database.
SSN_VESSEL_MNG_PKG	Perform vessel management: <ul style="list-style-type: none"> • Delete from the vessel registry the records of the vessels classified as temporary for a specified time slot. • Process the uploaded data with SHT vessels • Process the uploaded data with SHT vessels • Update the Vessel in the OVR based on the user input from the Validation and verification procedure. • Compare the vessel reported on a received notification against EIS OVR.
SSN_VOYAGE_SCAN_PKG	Scan for voyages to be propagated to a list of recipients. Part of the SSN integration with IMDaTe.

Table 2-7: List of Packages

2.2.7 Data Consistency

Data consistency rules are enforced by the referential integrity constraints that specify the relationships among primary keys and foreign keys of different tables. That includes the referential integrity constraints between the master and detail tables (e.g. NOTIFICATIONS

and AIS_NOTIFICATIONS) as well as the referential integrity constraints with the reference data tables (e.g. COUNTRIES).

Furthermore, the Oracle data consistency management ensures that each user sees a consistent view of the data, including visible changes made by the user's own transactions and transactions of other users.

2.2.8 SSN XML Messages Description

For the exchange of data between the Member States and the EIS, XML messages will be used. The format of the XML messages is defined in the XML Reference Guide [R4].

The Member States must transmit data to the EIS in the form of XML messages that are bound to the corresponding XML schema "ssn.xsd".

2.3 Physical Data Model (SSN-SSO)

The physical design diagrams of the REF_ADMIN database objects specific to the SSO are depicted in the following subsections. The contents and comments per table are presented in the subsequent sections.

2.3.1 Physical design diagrams

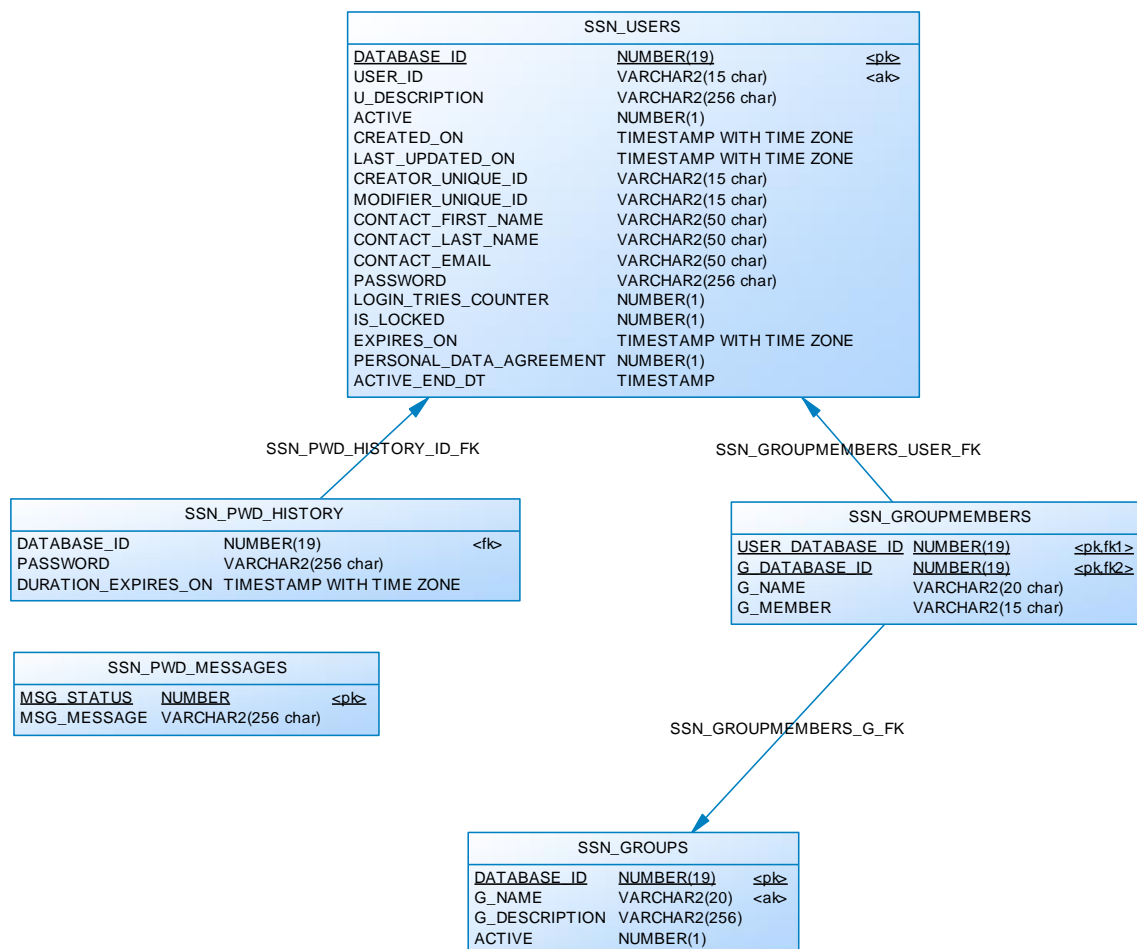


Figure 2-8 physical design diagram

2.3.2 Tables

This section lists all the tables contained in the SSN-SSO data model depicted in the previous subsection.

For the detailed table contents please refer to the subsequent sections.

Table	Comment
SSN_GROUPMEMBERS	Holds the assignments of users to groups. based on the group he/she belongs the user is granted access to the corresponding application (e.g. EIS, STIRES).
SSN_GROUPS	Holds the SSN groups based on the SSN application that the users will be granted access (e.g. EIS, STIRES).
SSN_PWD_HISTORY	Holds the history of most recent passwords per user and the duration the password cannot be re-used for
SSN_PWD_MESSAGES	Holds the password policy validation status codes and messages

SSN_PWD_POLICY	Holds the password policy parameters
SSN_USERS	Holds the actors (users) in SafeSeaNet.

Table 2-8 SSN-EIS List of Tables

2.3.2.1 Table SSN_GROUPMEMBERS

Code	Primary	Foreign Key	Mandatory	Data Type	Length
USER_DATABASE_ID	X	X	X	NUMBER(19)	19
G_DATABASE_ID	X	X	X	NUMBER(19)	19
G_NAME				VARCHAR2(20 char)	20
G_MEMBER				VARCHAR2(15 char)	15

2.3.2.2 Table SSN_GROUPS

Code	Primary	Foreign Key	Mandatory	Data Type	Length
DATABASE_ID	X		X	NUMBER(19)	19
G_NAME			X	VARCHAR2(20)	20
G_DESCRIPTION				VARCHAR2(256)	256
ACTIVE			X	NUMBER(1)	1

2.3.2.3 Table SSN_PWD_HISTORY

Code	Primary	Foreign Key	Mandatory	Data Type	Length
DATABASE_ID		X		NUMBER(19)	19
PASSWORD				VARCHAR2(256 char)	256
DURATION_EXPIRES_ON				TIMESTAMP WITH TIME ZONE	

2.3.2.4 Table SSN_PWD_MESSAGES

Code	Primary	Foreign Key	Mandatory	Data Type	Length
MSG_STATUS	X		X	NUMBER	
MSG_MESSAGE				VARCHAR2(256 char)	256

2.3.2.5 Table SSN_PWD_POLICY

Code	Primary	Foreign Key	Mandatory	Data Type	Length
PAR_NAME			X	VARCHAR2(50 char)	50
PAR_VALUE				NUMBER(3)	3

2.3.2.6 Table SSN_USERS

Code	Primary	Foreign Key	Mandatory	Data Type	Length
DATABASE_ID	X		X	NUMBER(19)	19
USER_ID			X	VARCHAR2(15 char)	15
U_DESCRIPTION				VARCHAR2(256 char)	256
ACTIVE			X	NUMBER(1)	1
CREATED_ON				TIMESTAMP WITH TIME ZONE	
LAST_UPDATED_ON				TIMESTAMP WITH TIME ZONE	
CREATOR_UNIQUE_ID				VARCHAR2(15 char)	15
MODIFIER_UNIQUE_ID				VARCHAR2(15 char)	15
CONTACT_FIRST_NAME				VARCHAR2(50 char)	50
CONTACT_LAST_NAME				VARCHAR2(50 char)	50
CONTACT_EMAIL				VARCHAR2(50 char)	50
PASSWORD				VARCHAR2(256 char)	256
LOGIN_TRIES_COUNTER				NUMBER(1)	1
IS_LOCKED				NUMBER(1)	1
EXPIRES_ON				TIMESTAMP WITH TIME ZONE	
PERSONAL_DATA_AGREEMENT				NUMBER(1)	1

ACTIVE_END_DT				TIMESTAMP	
---------------	--	--	--	-----------	--

2.3.3 References

The referential integrity constraints that are based on the relationships among master and detail tables or the relationships between tables and reference data tables are listed hereunder.

Name	Code	Parent Table	Child Table	Foreign Key Columns	Cardinality
SSN_GROUPMEMBERS_G_FK	SSN_GROUPMEMBERS_G_FK	SSN_GROUPS	SSN_GROUPMEMBERS	G_DATABASE_ID	0..*
SSN_GROUPMEMBERS_USER_FK	SSN_GROUPMEMBERS_USER_FK	SSN_USERS	SSN_GROUPMEMBERS	USER_DATA_BASE_ID	0..*
SSN_PWD_HISTORY_ID_FK	SSN_PWD_HISTORY_ID_FK	SSN_USERS	SSN_PWD_HISTORY	DATABASE_ID	0..*

Table 2-9 SSN SSO List of References

2.3.4 Data Consistency

Data consistency rules are enforced by the referential integrity constraints that specify the relationships among primary keys and foreign keys of different tables. That includes the referential integrity constraints between the master and detail tables (e.g. SSN_GROUPS and SSN_GROUPMEMBERS).

Furthermore, the Oracle data consistency management ensures that each user sees a consistent view of the data, including visible changes made by the user's own transactions and transactions of other users.

2.4 Physical Data Model (STIRES_SCHEMA)

The updated physical design diagram of the STIRES_SCHEMA database schema objects is depicted in the following subsection.

2.4.1 Physical design diagrams



Figure 2-9 Vessels and Notifications tables

VESSEL_TRACKS		
<u>OBJECTID</u>	NUMBER	<pk>
CONTACT_DT	DATE	
SOURCE_TYPE	VARCHAR2(50 char)	
SENT_MMSI_NUMBER	NUMBER(10)	
SENT_IMO_NUMBER	NUMBER(10)	
SENT_SHIP_NAME	VARCHAR2(35 char)	
SENT_CALL_SIGN	VARCHAR2(7 char)	
SENT_IR_NUMBER	VARCHAR2(12 char)	
SENT_XR_NUMBER	VARCHAR2(14 char)	
LENGTH	NUMBER(5,1)	
SHIP_TYPE	NUMBER(2)	
PSC_SHIP_TYPE	VARCHAR2(10 char)	
LMIU_SHIP_TYPE	VARCHAR2(10 char)	
WIDTH	NUMBER(4,1)	
DRAUGHT	NUMBER(4,1)	
DESTINATION	VARCHAR2(100 char)	
TRUE_HEADING	NUMBER(9)	
NAVIGATION_STATUS	NUMBER(2)	
EPFD_STATUS	NUMBER(1)	
EPFD_TYPE	NUMBER(2)	
AIS_CLASS	NUMBER(1)	
AIS_SHIP_TYPE	NUMBER(2)	
SPEED	NUMBER(5,1)	
COURSE	NUMBER(4,1)	
ROT	NUMBER(9)	
LATITUDE	NUMBER(8,6)	
LONGITUDE	NUMBER(9,6)	
SDO_POINT	MDSYS.SDO_GEOMETRY	
AIS_SHIP_CARGO	NUMBER(1)	
COUNTRY_NPOC	VARCHAR2(4000 char)	
COUNTRY_DESTINATION	VARCHAR2(4000 char)	
AREAS_NPOC	VARCHAR2(4000 char)	
AREAS_DESTINATION	VARCHAR2(4000 char)	
COG_AIS_SYMBOLGY	NUMBER	

VESSELS_ENRICHMENT		
<u>FK_VESSEL_ID</u>	NUMBER(28)	<pk>
VESSEL_ICON	NUMBER(2)	
VESSEL_IMO	NUMBER(10)	
VESSEL_MMSI	NUMBER(10)	
VESSEL_CALL_SIGN	VARCHAR2(7 char)	
VESSEL_SHIP_NAME	VARCHAR2(35 char)	
VESSEL_FLAG	VARCHAR2(3 char)	
VESSEL_IR_NUMBER	VARCHAR2(12 char)	
VESSEL_XR_NUMBER	VARCHAR2(14 char)	
IS_BB	CHAR(1 char)	
IS_FVP	CHAR(1 char)	
IS_BANNED	CHAR(1 char)	
IS_SHT	CHAR(1 char)	
IS_DETAINED	CHAR(1 char)	
PSC_SHIP_TYPE	VARCHAR2(10 char)	
LMIU_SHIP_TYPE	VARCHAR2(10 char)	
IS_IDLE	CHAR(1 char)	
IDLE_DT	DATE	
IS_HAZMAT	CHAR(1 char)	
IS_THERE_PORT_NOT	CHAR(1 char)	
IS_RELEVANT	CHAR(1 char)	
ALERT_TYPE	NUMBER(1)	
ALERT_DESCRIPTION	VARCHAR2(100 char)	
STIRES_VOYAGE_ID	VARCHAR2(36 char)	
EIS_VOYAGE_ID	VARCHAR2(36 char)	
ETA_TO_PORTOFCALL	TIMESTAMP	
ETD_FROM_PORTOFCALL	TIMESTAMP	
PORTOFCALL	VARCHAR2(5 char)	
POB_VOYAGE_TOWARDS_PORTOFCALL	VARCHAR2(5 char)	
SHIP_CALL_ID	VARCHAR2(36 char)	
LASTPORT	VARCHAR2(5 char)	
NEXTPORT	VARCHAR2(5 char)	
ATA_TO_PORTOFCALL	TIMESTAMP	
ATD_FROM_PORTOFCALL	TIMESTAMP	
ETA_TO_NEXTPORT	TIMESTAMP	
ETD_FROM_LASTPORT	TIMESTAMP	
POSITION_IN_PORTOFCALL	VARCHAR2(15 char)	
POSSIBLE_ANCHORAGE	VARCHAR2(1 char)	
PLANNED_OPERATIONS	VARCHAR2(256 char)	
PLANNED_WORKS	VARCHAR2(256 char)	
SHIP_CONFIGURATION	VARCHAR2(10 char)	
CARGO_VOLUME_NATURE	VARCHAR2(256 char)	
CONDITION_CARGO_BALLAST_TANKS	VARCHAR2(256 char)	
ANCHORAGE	VARCHAR2(1 char)	
HAZMATONBOARD	VARCHAR2(1 char)	
POB_VOYAGE_TOWARDS_NEXTPORT	VARCHAR2(5 char)	
SENT_AT	TIMESTAMP	
LENGTH	NUMBER(5,1)	
WIDTH	NUMBER(4,1)	
DRAUGHT	NUMBER(4,1)	
AIS_SHIP_TYPE	NUMBER(2)	
AIS_SHIP_CARGO	NUMBER(1)	
EPFD_TYPE	NUMBER(2)	
VESSEL_STATUS	NUMBER(1)	
CREATE_DT	TIMESTAMP	

Figure 2-10 Vessel Tracks and Enrichment tables

2.4.2 Tables

This section lists and describes the new/updated tables contained in the STIRES_SCHEMA data model.

For the detailed table contents please refer to the subsequent sections.

Table	Comment
AIS_NOTIFICATIONS	<p>Updated</p> <p>Removed the BIT columns used for authorization, which is now controlled by the PERMISSIONS assigned to user and the geographical restrictions applicable as indicated in the AREA_VISUALIZATION_MASK column.</p> <p>Data are persisted by the STIRES Core.</p> <p>Enrichment data for each track are taken from the VESSELS_ENRICHMENT table.</p> <p>A NEW TRIGGER "AIS_NOTIFICATIONS_POST_INS_TRG" will be created to merge (i.e. insert if none exists/update if one exists) the incoming track in the VESSEL_TRACKS that holds the latest AIS track for a given vessel.</p>
ARCGIS_AIS_TRACKS	<p>Deprecated</p> <p>Will no longer be in use in the SSN GI v2.2. It is replaced by the the VESSEL_TRACKS table.</p>
ARCGIS_AIS_TRACKS_ROUTE	<p>Deprecated</p> <p>The route of each vessel – based on the tracks of the last 24 hours – is taken from the AIS_NOTIFICATIONS and is stored in the application server memory.</p>
ARCGIS_FUSED_TRACKS	<p>Deprecated</p> <p>Will no longer be in use in the SSN GI v2.2. It is replaced by the the VESSEL_TRACKS table.</p>
ARCGIS_FUSED_TRACKS_ROUTE	<p>Deprecated</p> <p>The route of each vessel – based on the tracks of the last 24 hours – is taken from the AIS_NOTIFICATIONS & LRIT_NOTIFICATIONS and is stored in the application server memory.</p>
ARCGIS_LRIT_TRACKS	<p>Deprecated</p>

	Will no longer be in use in the SSN GI v2.2. It is replaced by the the VESSEL_TRACKS table.
ARCGIS_LRIT_TRACKS_ROUTE	Deprecated The route of each vessel – based on the tracks of the last 24 hours – is taken from the LRIT_NOTIFICATIONS and is stored in the application server memory.
ARCGIS_VMS_TRACKS	Deprecated Will no longer be in use in the SSN GI v2.2. It is replaced by the the VESSEL_TRACKS table.
ARCGIS_VMS_TRACKS_ROUTE	Deprecated The route of each vessel – based on the tracks of the last 24 hours – is taken from the VMS_NOTIFICATIONS and is stored in the application server memory.
EIS_VOYAGES	Deprecated Will no longer be in use in the SSN GI v2.2. It is replaced by the the VESSELS_ENRICHMENT table.
GIS_AIS_DATA	Deprecated Will no longer be in use in the SSN GI v2.2. The latest AIS track is merged in the VESSELS_TRACKS table upon insert in the AIS_NOTIFICATIONS using a post update trigger.
GIS_LRIT_DATA	Deprecated Will no longer be in use in the SSN GI v2.2. The latest LRIT track is merged in the VESSELS_TRACKS table upon insert in the LRIT_NOTIFICATIONS using a post update trigger.
GIS_VMS_DATA	Deprecated Will no longer be in use in the SSN GI v2.2. The latest VMS track is merged in the VESSELS_TRACKS table upon insert in the VMS_NOTIFICATIONS using a post update trigger.
ALRIT_NOTIFICATIONS	Updated A NEW TRIGGER "LRIT_NOTIFICATIONS_POST_INS_TRG" will

	be created to merge (i.e. insert if none exists/update if one exists) the incoming track in the VESSEL_TRACKS that holds the latest LRIT track for a given vessel.
SWAP_AIS_DATA	Deprecated Will no longer be in use in the SSN GI v2.2. The latest AIS track is merged in the VESSELS_TRACKS table upon insert in the ASI_NOTIFICATIONS using a post update trigger.
SWAP_LRIT_DATA	Deprecated Will no longer be in use in the SSN GI v2.2. The latest LRIT track is merged in the VESSELS_TRACKS table upon insert in the LRIT_NOTIFICATIONS using a post update trigger.
SWAP_VMS_DATA	Deprecated Will no longer be in use in the SSN GI v2.2. The latest VMS track is merged in the VESSELS_TRACKS table upon insert in the VMS_NOTIFICATIONS using a post update trigger.
VESSELS_ENRICHMENT	New It holds the vessel enrichment data retrieved upon request from EIS. Amongst data stored are the latest vessel details retrieved from RVD. Data will be used to enrich the NOTIFICATIONS specific table records.
VESSELS_NOTIFICATIONS	Deprecated Will no longer be in use in the SSN GI v2.2. It is replaced by the the VESSELS_ENRICHMENT table.
VESSEL_TRACKS	New Combines the latest tracks from AIS_NOTIFICATIONS, LRIT_NOTIFICATIONS and VMS_NOTIFICATIONS. Note: one track of each sensor type (e.g. AIS, LRIT and VMS). Tracks are loaded on the application server memory; the SDO geometry is calculated at

	that level; hence SDO geometry column is deprecated.
VMS_NOTIFICATIONS	Updated A NEW TRIGGER "VMS_NOTIFICATIONS_POST_INS_TRG" will be created to merge (i.e. insert if none exists/update if one exists) the incoming track in the VESSEL_TRACKS that holds the latest VMS track for a given vessel.

Table 2-10 STIRES_SCHEMA List of new/deprecated Tables

2.4.2.1 Table VESSEL_TRACKS

Code	Primary	Foreign Key	Mandatory	Data Type	Length
OBJECTID	X		X	NUMBER	
CONTACT_DT			X	DATE	
SOURCE_TYPE			X	VARCHAR2(50 char)	50
SENT_MMSI_NUMBER				NUMBER(10)	10
SENT_IMO_NUMBER				NUMBER(10)	10
SENT_SHIP_NAME				VARCHAR2(35 char)	35
SENT_CALL_SIGN				VARCHAR2(7 char)	7
SENT_IR_NUMBER				VARCHAR2(12 char)	12
SENT_XR_NUMBER				VARCHAR2(14 char)	14
LENGTH				NUMBER(5,1)	5
SHIP_TYPE				NUMBER(2)	2
PSC_SHIP_TYPE				VARCHAR2(10 char)	10
LMIU_SHIP_TYPE				VARCHAR2(10 char)	10
WIDTH				NUMBER(4,1)	4
DRAUGHT				NUMBER(4,1)	4
DESTINATION				VARCHAR2(100 char)	100
TRUE_HEADING				NUMBER(9)	9
NAVIGATION_STATUS				NUMBER(2)	2
EPFD_STATUS				NUMBER(1)	1
EPFD_TYPE				NUMBER(2)	2

AIS_CLASS				NUMBER(1)	1
AIS_SHIP_TYPE				NUMBER(2)	2
SPEED				NUMBER(5,1)	5
COURSE				NUMBER(4,1)	4
ROT				NUMBER(9)	9
LATITUDE				NUMBER(8,6)	8
LONGITUDE				NUMBER(9,6)	9
SDO_POINT				MDSYS.SDO_GEOMETRY	
AIS_SHIP_CARGO				NUMBER(1)	1
COUNTRY_NPOC				VARCHAR2(4000 char)	4000
COUNTRY_DESTINATION				VARCHAR2(4000 char)	4000
AREAS_NPOC				VARCHAR2(4000 char)	4000
AREAS_DESTINATION				VARCHAR2(4000 char)	4000
COG_AIS_SYMBLOGY				NUMBER	

2.4.2.2 Table VESSELS_ENRICHMENT

Code	Primary	Foreign Key	Mandatory	Data Type	Length
FK_VESSEL_ID	X		X	NUMBER(28)	28
VESSEL_ICON				NUMBER(2)	2
VESSEL_IMO				NUMBER(10)	10
VESSEL_MMSI				NUMBER(10)	10
VESSEL_CALL_SIGN				VARCHAR2(7 char)	7
VESSEL_SHIP_NAME				VARCHAR2(35 char)	35
VESSEL_FLAG				VARCHAR2(3 char)	3
VESSEL_IR_NUMBER				VARCHAR2(12 char)	12
VESSEL_XR_NUMBER				VARCHAR2(14 char)	14
IS_BB				CHAR(1 char)	1

IS_FVP				CHAR(1 char)	1
IS_BANNED				CHAR(1 char)	1
IS_SHT				CHAR(1 char)	1
IS_DETAINED				CHAR(1 char)	1
PSC_SHIP_TYPE				VARCHAR2(10 char)	10
LMIU_SHIP_TYPE				VARCHAR2(10 char)	10
IS_IDLE				CHAR(1 char)	1
IDLE_DT				DATE	
IS_HAZMAT				CHAR(1 char)	1
IS_THERE_PORT_NOT				CHAR(1 char)	1
IS_RELEVANT				CHAR(1 char)	1
ALERT_TYPE				NUMBER(1)	1
ALERT_DESCRIPTION				VARCHAR2(100 char)	100
STIRES_VOYAGE_ID				VARCHAR2(36 char)	36
EIS_VOYAGE_ID				VARCHAR2(36 char)	36
ETA_TO_PORTOFCALL				TIMESTAMP	
ETD_FROM_PORTOFCALL				TIMESTAMP	
PORTOFCALL				VARCHAR2(5 char)	5
POB_VOYAGE_TOWARDS_PORTOFCALL				VARCHAR2(5 char)	5
SHIP_CALL_ID				VARCHAR2(36 char)	36
LASTPORT				VARCHAR2(5 char)	5
NEXTPORT				VARCHAR2(5 char)	5
ATA_TO_PORTOFCALL				TIMESTAMP	
ATD_FROM_PORTOFCALL				TIMESTAMP	

ETA_TO_NEXTPORT				TIMESTAMP	
ETD_FROM_LASTPORT				TIMESTAMP	
POSITION_IN_PORTOFCALL				VARCHAR2(15 char)	15
POSSIBLE_ANCHORAGE				VARCHAR2(1 char)	1
PLANNED_OPERATIONS				VARCHAR2(256 char)	256
PLANNED_WORKS				VARCHAR2(256 char)	256
SHIP_CONFIGURATION				VARCHAR2(10 char)	10
CARGO_VOLUME_NATURE				VARCHAR2(256 char)	256
CONDITION_CARGO_BALLAST_TANKS				VARCHAR2(256 char)	256
ANCHORAGE				VARCHAR2(1 char)	1
HAZMATONBOARD				VARCHAR2(1 char)	1
POB_VOYAGE_TOWARDS_NEXTPORT				VARCHAR2(5 char)	5
SENT_AT				TIMESTAMP	
LENGTH				NUMBER(5,1)	5
WIDTH				NUMBER(4,1)	4
DRAUGHT				NUMBER(4,1)	4
AIS_SHIP_TYPE				NUMBER(2)	2
AIS_SHIP_CARGO				NUMBER(1)	1
EPFD_TYPE				NUMBER(2)	2
VESSEL_STATUS				NUMBER(1)	1
CREATE_DT				TIMESTAMP	

2.4.3 Views

The list of new/updated views is presented hereunder.



Figure 2-11 STIRES_SCHEMA Views

View	Comment
NOTIFICATIONS_VIEW	Provides a combined view of the AIS, LRIT and

	VMS notifications. Used by the vessel history and playback functionalities.
VESSEL_TRACKS_VW	Combines the latest VESSEL_TRACKS and corresponding (based on the FK_VESSEL_ID) vessel's VESSELS_ENRICHMENT data. Used by the map tab.
VESSELS_VIEW	Provides a deformatized view of the VESSELS_OPERATIONAL_REGISTRY and VESSELS_DETAILS along with the reference (TREF) AIS, LMIU and PSC ship types. Used by the new vessels tab.

Table 2-11: SSN-EIS List of Views

2.4.4 Synonyms

External data sources are referenced via the SYNONYMS defined hereunder for the newly defined tables listed in the previous sub section.

Synonym	Comments
NOTIFICATIONS_VIEW	<i>Synonym Type:</i> Private synonym <i>Synonym Owner:</i> ARCGIS_STIRES <i>Object Name:</i> NOTIFICATIONS_VIEW <i>Object Owner:</i> STIRES_SCHEMA <i>Object Type:</i> View
VESSEL_TRACKS_VW	<i>Synonym Type:</i> Private synonym <i>Synonym Owner:</i> ARCGIS_STIRES <i>Object Name:</i> VESSEL_TRACKS_VW <i>Object Owner:</i> STIRES_SCHEMA <i>Object Type:</i> View
VESSELS_VIEW	<i>Synonym Type:</i> Private synonym <i>Synonym Owner:</i> ARCGIS_STIRES <i>Object Name:</i> VESSELS_VIEW <i>Object Owner:</i> STIRES_SCHEMA <i>Object Type:</i> View

Table 2-12: STIRES_SCHEMA List of Synonyms

2.4.5 Packages and Procedures, Functions

The list of updated/deprecated packages and procedures is presented hereunder.

Package	Description
PCK_AIS_DATA_MANAGE	Deprecated

Package	Description
	Will no longer be in use in the SSN GI v2.2. STIRES Core persist the AIS_NOTIFICATIONS data per message type. Enrichment information are taken from the VESSELS_ENRICHMENT TABLE.
P_REFRESH_ARCGIS_AIS	Deprecated Will no longer be in use in the SSN GI v2.2. The latest AIS track is merged in the VESSELS_TRACKS table upon insert in the AIS_NOTIFICATIONS using a post update trigger.
P_REFRESH_ARCGIS_LRIT	Deprecated Will no longer be in use in the SSN GI v2.2. The latest LRIT track is merged in the VESSELS_TRACKS table upon insert in the LRIT_NOTIFICATIONS using a post update trigger.
P_REFRESH_ARCGIS_VMS	Deprecated Will no longer be in use in the SSN GI v2.2. The latest VMS track is merged in the VESSELS_TRACKS table upon insert in the VMS_NOTIFICATIONS using a post update trigger.
PCK_VESSEL_ENRICHMENT	New Enrich the resolved vessel reported on a VDM message. The package will entail procedures that take as input the SSN-EIS enrichment information to update the STIRES OVR and the VESSELS_ENRICHMENT table data.
PCK_VMS_UTILITY	Updated Update the ENRICH_VMS_VESSEL_SF function to take data from the newly defined VESSELS_ENRICHMENT table that holds the enrichment data pore vessel taken from SSN-EIS. Functions F_UPDATE_VMS_TRACKS and F_INSERT_VMS_DATA become deprecated as the GIS_VMS_DATA and ARCGIS_VMS_DATA tables become deprecated.

Table 2-13: STIRES_SCHEMA List of Packages and Procedures

2.5 Physical Data Model (REF_ADMIN)

The updated physical design diagram of the REF_ADMIN database schema objects is depicted in the following subsection.

2.5.1 Central Ship Database (CSD)

2.5.1.1 Physical design diagrams

The physical data model is depicted in the Figure 2-12: presents the tables that hold the reference vessel database details and data relative to MARS vessels as well as data export of ship particulars stored in national vessel databases in electronic format.



Figure 2-12 CSD - Physical Design Diagram

2.5.1.2 Tables

The following table provides the definition of the new and modified tables.

Table	Comment
APPLICATION_PARAMETERS_REF	Holds application configuration parameters that define: <ul style="list-style-type: none"> Percentage of different characters limit in to proceed to update of ship name in RVD (i.e. those existing in the database and those proposed by the reference source) differ by more than a configurable parameter (e.g. 20%). Limit in days invoked on check which results in a decision to update the database.
CSD_AIS_SHIP_TYPES	Table contains all ship types used in the STIRES system, AIS ship types
CSD_UN_SHIP_TYPES	The type of ship according to the PSC UN/ECE classification.
CSD_PSC_SHIP_TYPES	The type of ship according to the PSC classification.
CSD_VESSEL_DETAIL_VERSIONS	Table holds versions about the details of a vessel
MARS_VESSELS	Vessels registered in MARS database. Data imported from external stage table MARS_VESSELS_STG
MARS_VESSELS_STG	Stage table for vessels registered in MARS database. Data imported from external table MARS_VESSELS_EXT
MARS_VESSELS_EXT	MARS vessels external table, loading external data i.e. CSV files
MS_VESSELS_EXT	External table for export of ship particulars stored in their national vessel databases in electronic format
MS_VESSELS	The uploaded MS vessels stage table
MS_EXT_DIFF_ATTRIBUTES	Table to configure acceptable "range" of difference attributes (IMO, MMSI, CallSign, ShipName etc.) Invoked by duplicate detection mechanism during external data upload process.
MS_EXT_CSV_FILES	Table contains information refers to the uploaded MS CSV files
MS_EXT_INCONSISTENT_DATA	Table contains MS external file inconsistent data. Vessel found more than one times Case 1: Same MMSI or IMO or SHPINAME or CALL SIGN for the same flag code

Table	Comment
	Case 1: Same MMSI or IMO or SHPINAME or CALL SIGN for different flag codes

Table 2-14 List of CSD Tables

2.5.1.3 References

The referential integrity constraints that are based on the relationships among master and detail tables or the relationships between tables and reference data tables are presented in the following table.

Code	Comment
RVR_VES_DETAILS_FK_OLD	VESSEL has at least one or more of VESSEL_DETAIL_VERSIONS

Table 2-15 List of RVD References

2.5.2 Central Organisation Database (COD)

2.5.2.1 Physical design diagrams

The physical data model is depicted in Figure 2-13 presents the tables that hold the base authority repository data.

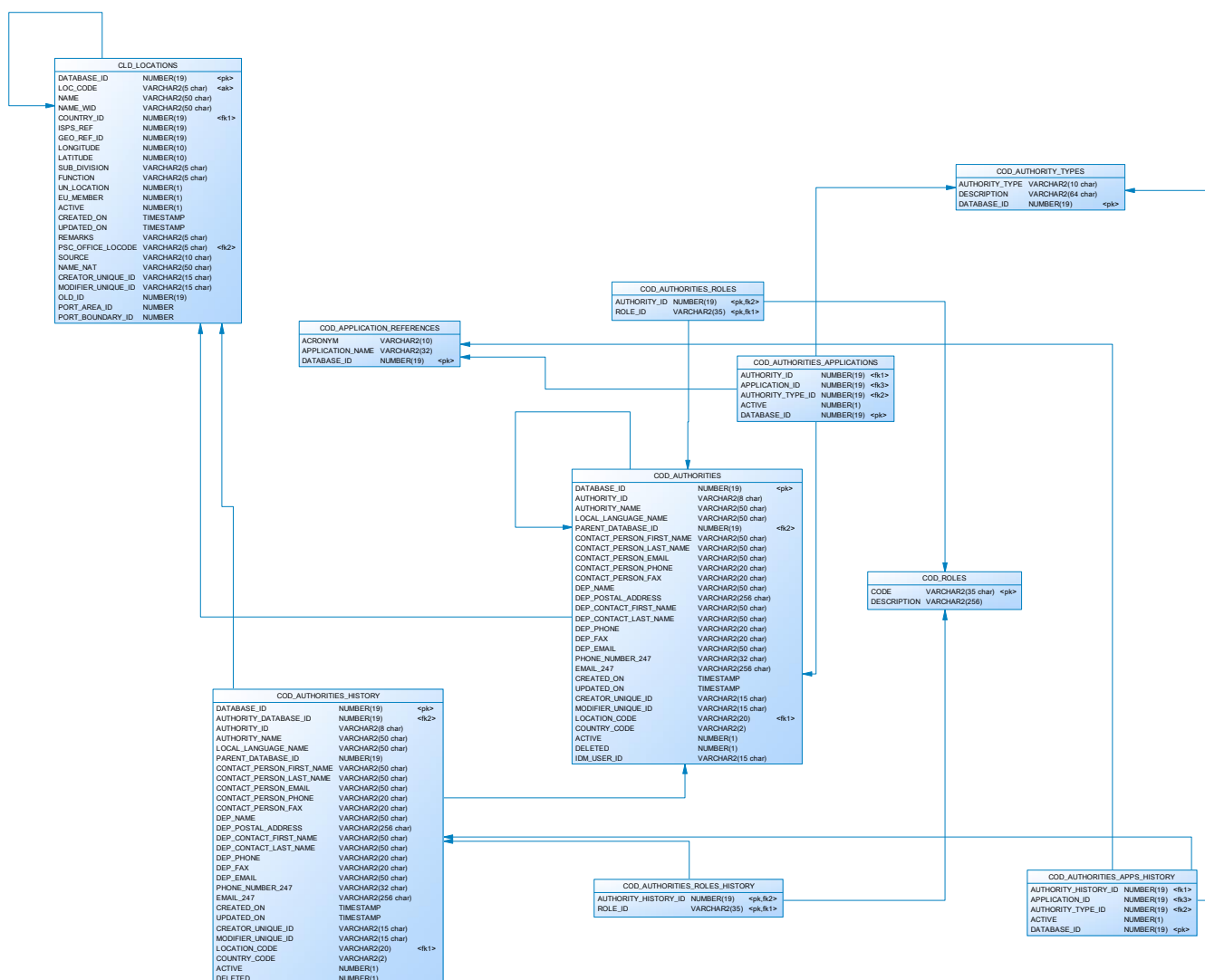


Figure 2-13 COD - Physical Design Diagram

2.5.2.2 Tables

The following table provides the definition of the new tables.

Table	Comment
COD_AUTHORITIES	The authorities registry table
COD _AUTHORITY_TYPES	EMSA authority types
COD_APPLICATION_REFERENCES	EMSA applications reference list
COD_AUTHORITIES_APPLICATIONS	Holds the applications where the COD authority is registered with a specific authority type
COD_AUTHORITIES_APPS_HISTORY	Holds the applications where the COD historical

Table	Comment
	authority is registered with a specific authority type
COD_AUTHORITIES_HISTORY	The historical authorities registry
COD_AUTHORITIES_ROLES	Holds the functional roles assigned to bar authorities
COD_AUTHORITIES_ROLES_HISTORY	Holds the functional roles assigned to bar historical authorities
COD_ROLES	Holds the functional roles

Table 2-16 List of COD Tables

2.5.2.3 References

The referential integrity constraints that are based on the relationships among master and detail tables or the relationships between tables and reference data tables are presented in the following table.

Code	Comment
COD_AUTHORITY_RL_LOCATION_FK	AUTHORITY has reference to LOCATIONS
COD_AUTHORITY_RL_AUTHORITY_FK	AUTHORITY has internal reference to parent AUTHORITY
COD_AUTHORITY_RL_COUNTRY_FK	AUTHORITY has reference to EIS_ADMIN.COUNTRIES
COD_AUTHORITIES_FK	AUTHORITY APPLICATIONS have reference to AUTHORITY
COD_AUTHORITY_TYPES_FK	AUTHORITY APPLICATIONS have reference to AUTHORITY TYPES
COD_APPLICATIONS_FK	AUTHORITY APPLICATIONS have reference to APPLICATION REFERENCES
COD_AUTHORITY_DATABASE_ID_FK	AUTHORITY HISTORY has reference to AUTHORITY
COD_LOCATION_CODE_FK	AUTHORITY HISTORY has reference to LOCATION
COD_COUNTRY_CODE_FK	AUTHORITY HISTORY has reference to EIS_ADMIN.COUNTRIES
CAAH_AUTHORITY_HISTORY_ID_FK	HISTORICAL AUTHORITIES APPLICATION has reference to AUTHORITY HISTORY
CAAH_AUTHORITY_TYPE_ID_FK	HISTORICAL AUTHORITIES APPLICATION has reference to AUTHORITY TYPE
CAAH_APPLICATION_ID_FK	HISTORICAL AUTHORITIES APPLICATION has reference to APPLICATION REFERENCES

Code	Comment
COD_AUTH_ROLES_AUTH_FK	AUTHORITIES ROLES have reference to AUTHORITY
COD_AUTH_ROLES_ROLE_FK	AUTHORITIES ROLES have reference to ROLES
CODH_AUTHORITY_HISTORY_ID_FK	AUTHORITY ROLES HISTORY has reference to AUTHORITY HISTORY
CODH_ROLE_ID_FK	AUTHORITY ROLES HISTORY has reference to ROLES

Table 2-17 List of COD References

2.5.3 Central Locations Database (CLD)

2.5.3.1 Physical design diagrams

The physical data model is depicted in Figure 2-14 presents the tables that hold the base location repository data.

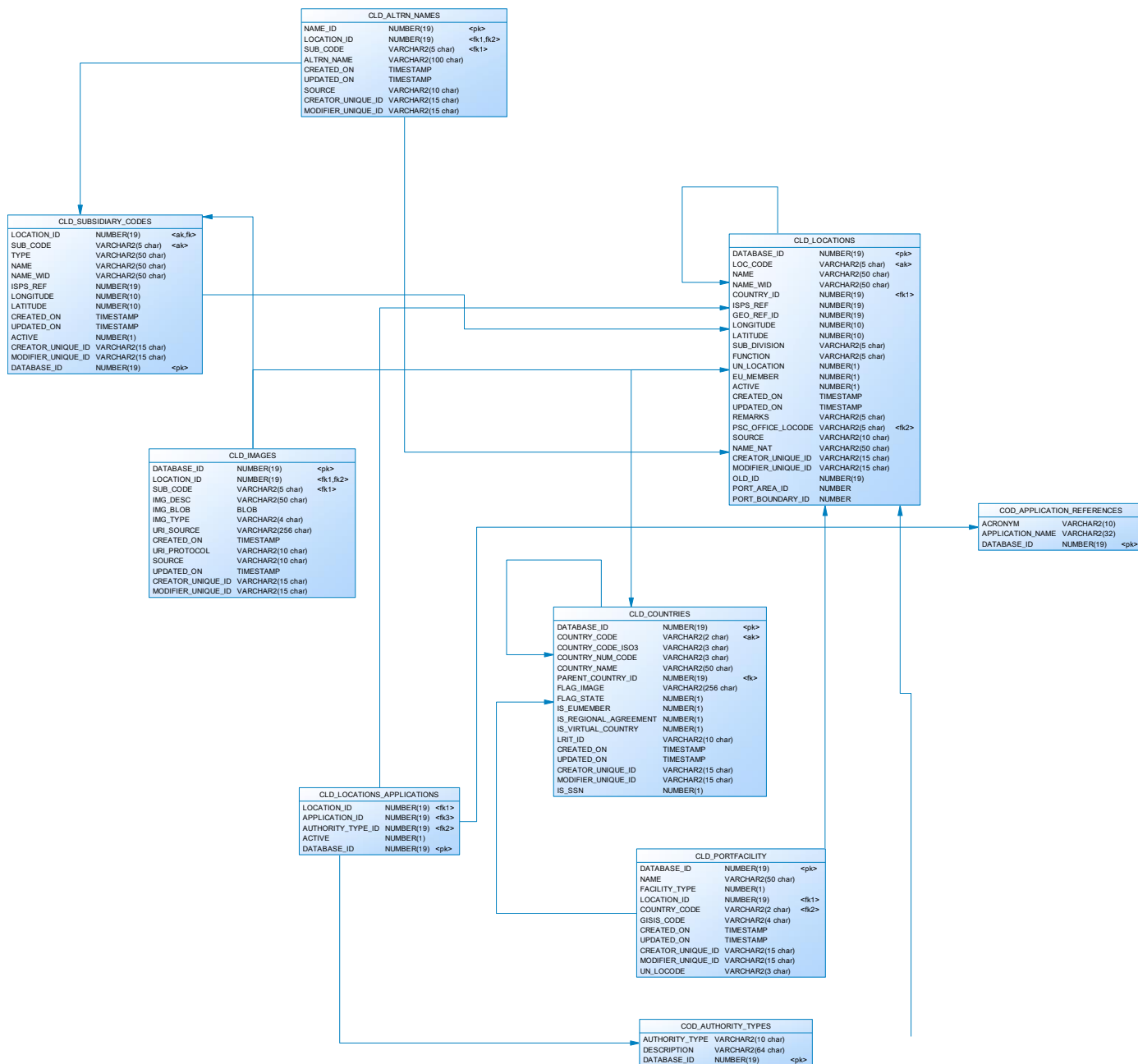


Figure 2-14 CLD - Physical Design Diagram

2.5.3.2 Tables

The following table provides the definition of the new tables.

Table	Comment
CLD_LOCATIONS	Stores the location codes that are primarily identified by the LOC_CODE attribute. Locations contain UNECE and SSN Specific LOCODEs
CLD_COUNTRIES	The countries table
CLD_IMAGES	A storage for multimedia files related to a LR_LOCATIONS and/or the LR_SUBSIDIARY_CODES. The files include pictures or video and are stored as BLOBs
CLD_ALTRN_NAMES	Alternative names mapping table. Alternative names can be defined for both the LR_LOCATIONS and the LR_SUBSIDIARY_CODES. The LR_ ALTRN _NAMES will be used primarily to resolve the LOCATION_CODE when the location is reported by its name instead.
CLD_SUBSIDIARY_CODES	Other subsidiary locations within a port location (defined in the LR_LOCATIONS table). Subsidiary locations include: Terminals within port areas Anchorage Pilot boarding and disembarkation points VTS reporting points Places of refuge
CLD_LOCATIONS_APPLICATIONS	Holds the applications where the CLD location is registered with a specific authority type
CLD_PORTFACILITY	Identification of a port

Table 2-18 List of CLD Tables

2.5.3.3 References

The referential integrity constraints that are based on the relationships among master and detail tables or the relationships between tables and reference data tables are presented in the following table.

Code	Comment
CLD_COUNTRY_RL_COUNTRY_FK	COUNTRY has internal reference to PARENT COUNTRY

RLR_ALTRN_NAMES_LOCATIONS_FK	ALTERNATIVE NAMES have reference to LOCATION
RLR_ALTRN_NAMES_SUB_FK	ALTERNATIVE NAMES have reference to SUBSIDIARY LOCATION
RLR_IMAGES_LR_LOCATIONS_FK	IMAGES have reference to LOCATION
RLR_IMAGES_LR_SUB_FK	IMAGES have reference to SUBSIDIARY LOCATION
RLR_LOCATIONS_RL_LOCATION_FK	LOCATION has internal reference to PARENT LOCATION
CLD_LOCATIONS_RL_COUNTRIES_FK	LOCATION has reference to COUNTRY
CLD_LOCATIONS_RL_LOCATION_FK	LOCATION has reference to PSC office LOCATION
RLR_SUB_LOCATIONS_FK	SUBSIDIARY LOCATIONS have reference to LOCATION
CLA_LOCATION_ID_FK	LOCATION APPLICATIONS have reference to LOCATION
CLA_AUTHORITY_TYPE_ID_FK	LOCATION APPLICATIONS have reference to AUTHORITY TYPE
CLA_APPLICATION_ID_FK	LOCATION APPLICATIONS have reference to APPLICATION REFERENCES

Table 2-19 List of CLD References

2.5.4 Packages

The list of packages is presented hereunder

Package	Description
SSN_RLR_MNG_PKG	Reference LOCATIONS Repository management procedures
SSN_RVR_MNG_PKG	Reference VESSEL Repository management procedures
SSN_RVR_EXT_PKG	Reference external data file upload and management procedures

Table 2-9 List of OVR,CSD,COD,CLD Packages

ANNEX A: TASKS

The set of tasks assigned to an authority or user defines the permissions of that authority or user. The list of SSN-EIS related tasks are listed in the following table.

Code	Description	Interface	Geo restriction?	Visualization/ Provider
ACCESS_BB_PAGES	Allow users access to the Blue Belt section of the EIS Find Information web console	web		
ALERT_DISTR_ADMIN_REQUESTOR	Administration of Distributed Alert Notifications	web		Visualization
ALERT_LFC_NOTIFIER	Send Lost And Found Alert Notifications	xml,web		
ALERT_LFC_REQUESTOR	Request for Lost And Found Alert Notifications	xml,web	yes	Visualization
ALERT_OTHERS_NOTIFIER	Send Others Alert Notifications	xml,web		
ALERT_OTHERS_REQUESTOR	Request for Others Alert Notifications	xml,web	yes	Visualization
ALERT_POLREP_NOTIFIER	Send POLREP Alert Notifications	xml,web		
ALERT_POLREP_REQUESTOR	Request for POLREP Alert Notifications	xml,web	yes	Visualization
ALERT_SITREP_NOTIFIER	Send SITREP Alert Notifications	xml,web		
ALERT_SITREP_REQUESTOR	Request for SITREP Alert Notifications	xml,web	yes	Visualization
ALERT_WASTE_NOTIFIER	Send Waste Alert Notifications	xml,web		
ALERT_WASTE_REQUESTOR	Request for Waste Alert Notifications	xml,web	yes	Visualization
APPLICATION_PARAMETERS_MANAGER	Application Parameters Manager	web		
AREA_MANAGER	Area and Country Management.	web		
BANNED_VESSEL_DOWNLOAD	Banned Vessel Download	web		
BANNED_VESSEL_MANAGER	Banned Vessel Manager	web		
BANNER_MANAGER	Banner Management	web		
BB_EMAIL	Allow users granted the task to receive e-mail notifications sent of the Custom Authorities	web	yes	Visualization

Code	Description	Interface	Geo restriction?	Visualization/ Provider
	for Blue ships			
BB_LIST_MAINTAIN	Allow users granted the task to administer the functions and features related to Customs.	web		
BB_NOTIFY	Allow users granted the task (i.e. Custom Authorities) to dispatch goods and procedures related notifications to SSN	web	yes	Provider
DETAINED_VESSEL_DOWNLOAD	Detained Vessel Download	web		
EIS_MONITOR_JMSQUEUE	EIS monitoring JMS queues	web		
EIS_MONITOR_USERACTIVITY	EIS monitoring web user activity	web		
EMAIL_SENDER	Send Email	web		
ENABLE_VISUAL_DISCRIM_BB	Allow users granted the task to select/update the background color and symbol for Blue ships	web		
EXEMPTIONS_NOTIFIER	Exemptions Notifier	web	yes	Provider
EXEMPTIONS_REQUESTOR	Exemptions Requestor	web	yes	Visualization
FREE_TEXT_SEARCH	Free Text Search	web		
GROUP_MANAGER	Group Management	web		
HAZMAT_NOTIFIER	Send Hazmat Notifications	xml,web		Provider
HAZMAT_REQUESTOR	Request Hazmat Notifications	xml,web	yes	Visualization
INCIDENT_REP_DISTRIBUTOR	Allow Distribution of Incident Reports	web		
INCIDENT_REP_RECIPIENT	Incident reports recipient	web		
LOCATIONS_UPLOAD	Upload and validate UNECE LOCODEs	web		
LOCATION_DOWNLOAD	Download UNECE and SSN Specific LOCODEs	web		
LOCATION_MANAGER	Location Management	web	yes	Visualization
LOGS_SEARCH	Log Search	web		
MSS_TOOL_MANAGER	MSS Tool Manager	web		
NOTIFICATION_PARAMETERS_MANAGER	Notification Parameters Manager	web		
PORTPLUS_NOTIFIER	Send PortPlus Notifications	xml,web	yes	Provider

Code	Description	Interface	Geo restriction?	Visualization/ Provider
PORT_NOTIFIER	Send Port Notifications	xml,web	yes	Provider
PORT_REQUESTOR	Request Port Notifications	xml,web	yes	Visualization
PROXIES_MANAGER	STIRES Proxies Manager	web		
ROLE_MANAGER	Role Management	web		
SAT_REQUESTOR	Ship Activity Tracking Service Requestor	web		
SECURITY_NOTIFIER	Send Security Notifications	xml,web	yes	Provider
SECURITY_REQUESTOR	Request Security Notifications	xml,web	yes	Visualization
SHIPCALL_REQUESTOR	Request ShipCall Notification details	xml,web	yes	Visualization
SHIPPARTICULARS_NOTIFIER	Send ShipParticular Notifications	xml		
SHIPPARTICULARS_REQUESTOR	Request ShipParticulars Information	xml		
SHIP_AIS_NOTIFIER	Send Ship AIS Notifications	xml		
SHIP_AIS_REQUESTOR	Request Ship AIS Notifications	xml,web	yes	Visualization
SHIP_MRS_NOTIFIER	Send Ship MRS Notifications	xml,web	yes	Provider
SHIP_MRS_REQUESTOR	Request Ship MRS Notifications	xml,web	yes	Visualization
SHT_VESSEL_DOWNLOAD	SHT Vessel Download	web		
STATS_REQUESTOR	Request SSN Statistics	web		
STIRES_ADMIN_AGENCIES_DELETE		web		
STIRES_ADMIN_AGENCIES_LIST		web		
STIRES_ADMIN_AGENCIES_NEW		web		
STIRES_ADMIN_AGENCIES_UPDATE		web		
STIRES_ADMIN_LRITID_DELETE		web		
STIRES_ADMIN_LRITID_LIST		web		
STIRES_ADMIN_LRITID_NEW		web		
STIRES_ADMIN_LRITID_UPDATE		web		
STIRES_ADMIN_PROFILES_DELETE		web		

Code	Description	Interface	Geo restriction?	Visualization/ Provider
STIRES_ADMIN_PROFILES_FUNCTIONS		web		
STIRES_ADMIN_PROFILES_LIST		web		
STIRES_ADMIN_PROFILES_NEW		web		
STIRES_ADMIN_PROFILES_UPDATE		web		
STIRES_ADMIN_PROXIES_ALL		web		
STIRES_ADMIN_PROXIES_DELETE		web		
STIRES_ADMIN_PROXIES_LIST		web		
STIRES_ADMIN_PROXIES_NEW		web		
STIRES_ADMIN_PROXIES_POLICIES		web		
STIRES_ADMIN_PROXIES_REFERENCES		web		
STIRES_ADMIN_PROXIES_UPDATE		web		
STIRES_ADMIN_REFDATA EMSAFLEET_DELETE		web		
STIRES_ADMIN_REFDATA EMSAFLEET_IMPORT		web		
STIRES_ADMIN_REFDATA EMSAFLEET_LIST		web		
STIRES_ADMIN_REFDATA EMSAFLEET_NEW		web		
STIRES_ADMIN_REFDATA EMSAFLEET_UPDATE		web		
STIRES_ADMIN_REFDATA TREFFORTS_AREA		web		
STIRES_ADMIN_REFDATA TREFFORTS_DELETE		web		
STIRES_ADMIN_REFDATA TREFFORTS_LIST		web		
STIRES_ADMIN_REFDATA TREFFORTS_MEDIA		web		

Code	Description	Interface	Geo restriction?	Visualization/ Provider
STIRES_ADMIN_REFDATA_TREFPORTS_NEW		web		
STIRES_ADMIN_REFDATA_TREFPORTS_UPDATE		web		
STIRES_ADMIN_STIRESCOUNTRIES_ADD		web		
STIRES_ADMIN_STIRESCOUNTRIES_LIST		web		
STIRES_ADMIN_STIRESCOUNTRIES_REMOVE		web		
STIRES_ADMIN_USERS_DELETE		web		
STIRES_ADMIN_USERS_LIST		web		
STIRES_ADMIN_USERS_NEW		web		
STIRES_ADMIN_USERS_PROFILES		web		
STIRES_ADMIN_USERS_UPDATE		web		
STIRES_AISSERVICE		web		Visualization
STIRES_AISSERVICE_CONFIGURE		web		
STIRES_CONF_SETTINGS_LIST		web		
STIRES_CONF_SETTINGS_UPDATE		web		
STIRES_MONITOR_ERRMESAGES		web		
STIRES_MONITOR_JMSQUEUE		web		
STIRES_MONITOR_PROXIES		web		
STIRES_MONITOR_SENTEXCPTIONS		web		
STIRES_PORTAL		web		
STIRES_REPORTS_REPORTS		web		
STIRES_REPORTS_REPORTS_EMSA_FLEET		web		

Code	Description	Interface	Geo restriction?	Visualization/ Provider
STIRES_REPORTS_REPORTS_PORTS_ARRIVAL		web		
STIRES_REPORTS_REPORTS_PORTS_DEPARTURES		web		
STIRES_REPORTS_STATISTICS		web		
STIRES_REPORTS_STATISTICS_AISCARGO_TYPE		web		
STIRES_REPORTS_STATISTICS_AIS_TYPE		web		
STIRES_REPORTS_STATISTICS_CARGO_TYPE		web		
STIRES_REPORTS_STATISTICS_CROSS_AISCARGO_TYPE		web		
STIRES_REPORTS_STATISTICS_CROSS_AIS_TYPE		web		
STIRES_REPORTS_STATISTICS_CROSS_COUNTRY		web		
STIRES_REPORTS_STATISTICS_CROSS_LMIU_TYPE		web		
STIRES_REPORTS_STATISTICS_CROSS_PSC_TYPE		web		
STIRES_REPORTS_STATISTICS_CROSS_SHIP		web		
STIRES_REPORTS_STATISTICS_DESTINATION		web		
STIRES_REPORTS_STATISTICS_DRAUGHT		web		
STIRES_REPORTS_STATISTICS_LENGTH		web		
STIRES_REPORTS_STATISTICS_LMIU_TYPE		web		
STIRES_REPORTS_STATISTICS_PSC_TYPE		web		
STIRES_REPORTS_STATISTICS_SOG		web		
STIRES_REPORTS_STATISTICS_TRAFFIC_DENSITY		web		

Code	Description	Interface	Geo restriction?	Visualization/ Provider
STIRES_REPORTS_STATISTICS_TRAVEL_AISCARGO_TYPE		web		
STIRES_REPORTS_STATISTICS_TRAVEL_AIS_TYPE		web		
STIRES_REPORTS_STATISTICS_TRAVEL_COUNTRY		web		
STIRES_REPORTS_STATISTICS_TRAVEL_LMIU_TYPE		web		
STIRES_REPORTS_STATISTICS_TRAVEL_PSC_TYPE		web		
STIRES_REPORTS_STATISTICS_TRAVEL_SHIP		web		
STIRES_VIEWER_GIS		web		
STIRES_VIEWER_GIS_ACCESS_7D_WINDOW_DB		web	yes	Visualization
STIRES_VIEWER_GIS_ACCESS_COMMON_BOOKMARKS		web		
STIRES_VIEWER_GIS_ACCESS_COMMON_FILTERS		web		
STIRES_VIEWER_GIS_ACCESS_COMMON_WATCHDOG		web		
STIRES_VIEWER_GIS_ACCESS_PLAYBACK		web		
STIRES_VIEWER_GIS_CREATE_COMMON_BOOKMARKS		web		
STIRES_VIEWER_GIS_CREATE_COMMON_FILTER		web		
STIRES_VIEWER_GIS_CREATE_COMMON_WATCHDOG		web		
STIRES_VIEWER_GIS_CREATE_PROXIES_FILTERS		web		
STIRES_VIEWER_GIS_CREATE_STATISTICS_OVERLAYS		web		
STIRES_VIEWER_GIS_GET_HAZMAT_DETAILS		web	yes	Visualization
STIRES_VIEWER_GIS_GET_INCIDENT_DETAILS		web	yes	Visualization

Code	Description	Interface	Geo restriction?	Visualization/ Provider
STIRES_VIEWER_GIS_GET_SHIPCALL_DETAILS		web	yes	Visualization
STIRES_VIEWER_GIS_VIEW_GEOPICTURE		web		
STIRES_VIEWER_GIS_VISUALISE_AIS_DATA		web	yes	Visualization
STIRES_VIEWER_GIS_VISUALISE_ENRICHMENT_DATA		web	yes	Visualization
STIRES_VIEWER_GIS_VISUALISE_LRIT_DATA		web		
STIRES_VIEWER_GIS_VISUALISE_VMS_DATA		web	yes	Visualization
USER_MANAGER	User Management	web	yes	Visualization
USER_NEW_IND_RECIPIENT	Define a user as recipient of the warning email message to be send in case of a new user	web		
VESSEL_STATUS_IND_RECIPIENT	Define a user as recipient of the warning email message to be send in case of a vessel status change	web		
VMS_AIS_RECEIVER	Receive AIS POS messages converted in NAF format	xml	yes	Provider
VMS_NOTIFIER	Send VMS POS messages in NAF format	xml	yes	Provider
VESSEL_MANAGER	Permits access to the vessel management functions	Web	No	
RVR_MANAGER	Permits access to the Create vessel in RVR	Web	No	
INTERFACE_MANAGER	Permits access to the Administer Interfaces	Web	No	
USER_CLONE		Web	No	
GROUP_CLONE		Web	No	
ROLE_CLONE		Web	No	
VESSEL_VIEWER	Permits the visualisation of vessel data assigned	Web	No	
GIS_VIEW_NOTIFICATIONS	Enables access to the vessel notifications tab where from the export is available	Web	Yes	Visualization

Code	Description	Interface	Geo restriction?	Visualization/ Provider
ENABLE_AIS_VISUAL_DISCRIM	Allow visual discrimination, on the SSN-GI, of position data provided by specific data providers	Web	Yes	Provider
ENABLE_AIS_HEAD	Enable/disable AIS heading indication in line with the symbology utilized by IALA for AIS	Web	No	
ALLOW_DYN_VIEW_CHOICE	Grants access to dynamic view of ship tracks.	Web	No	
USER_MANAGER_MS	Permits the management of MS users	Web	Yes (Country)	
USER_MANAGER_TC	Permits the management of TC users	Web	Yes (Country)	